

## FEATURES

- ▶ Narrow particle size distribution
- ▶ Nano particle size
- ▶ Process controlled top size
- ▶ Meets requirements of BP, EP, and USP

## BENEFITS

- ▶ Minimize impact modifier loading
- ▶ Reduced process aid loading for overall reduced cost
- ▶ Halal and Kosher certified

# MULTIFEX-MM<sup>®</sup>

## Precipitated Calcium Carbonate

### Product Description

MULTIFEX-MM<sup>®</sup> precipitated calcium carbonate (PCC) is manufactured at Specialty Minerals Lifford. MULTIFEX-MM<sup>®</sup> is a white microcrystalline powder, characterized by high surface area, controlled particle shape, and high whiteness. MULTIFEX-MM<sup>®</sup> is suitable for both industrial and consumer applications.

#### INDUSTRIAL APPLICATIONS:

The high surface area and rheological structure-building ability of MULTIFEX-MM<sup>®</sup> PCC make it a versatile functional filler. Its hydrophilic nature makes it particularly suitable for use in water based systems though it is also compatible with many polymer, and solvent-based systems.

The regular particle shape of MULTIFEX-MM<sup>®</sup> PCC makes it suitable for use in gravure inks where its low abrasion is an added benefit compared to other fillers.

Other industrial uses of MULTIFEX-MM<sup>®</sup> include:

- Rubber reinforcement
- Carrier for catalysts, peroxides, and fragrances
- Detackification of thin film natural rubber
- Powder flow control additive

#### CONSUMER APPLICATIONS:

MULTIFEX-MM<sup>®</sup> meets the requirements of United States Pharmacopoeia and is an excellent source of calcium in foods and beverages and as an excipient in pharmaceutical applications. Specifications and required properties should be clearly communicated at time of order placement to ensure all testing is met.

### Typical Physical Properties\*

|  |           |
|--|-----------|
| +45 $\mu$ BS sieve residue                               | <0.1%     |
| Loss on Drying<br>(at time of testing, @200°C for 4hrs.) | 1.0 % max |
| Surface Area (m <sup>2</sup> /gram)                      | 17-29     |
| Dry Brightness (Minolta Y)                               | 98.5      |
| Morphology   | Prismatic |
| Primary Particle Size (nm) Bulk                          | 70        |
| Density (g/ml)   | 0.25      |
| Tap Density (g/ml)                                       | 0.42      |

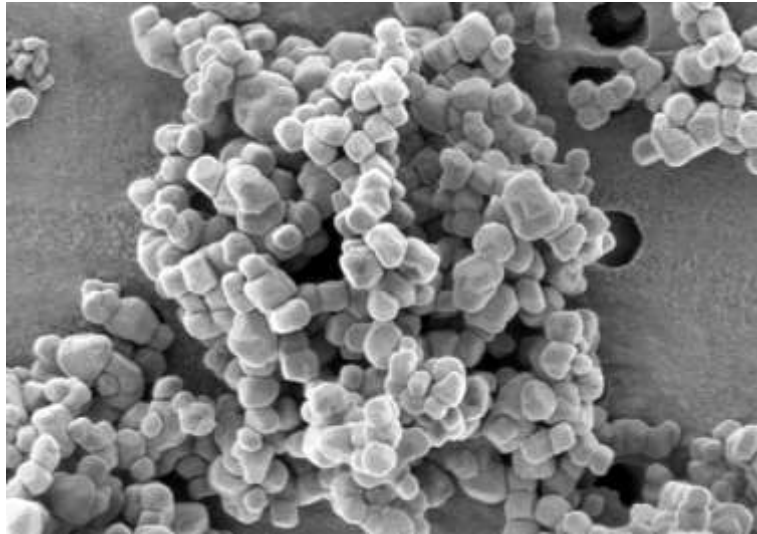
\*Values listed are typical, not to be considered as specifications of the product.

### Chemical Properties

|                   |       |
|-------------------|-------|
| Calcium Carbonate | 98%   |
| Moisture          | <0.5% |

# MULTIFEX-MM<sup>®</sup>

## Precipitated Calcium Carbonate



### SHIPPING INFORMATION

MULTIFEX-MM<sup>®</sup> ships from Adams, MA.

Product is available in 25kg bags.

For availability and minimum order quantity, contact customer service.

### SALES OFFICES

Adams, MA  
877-684-7627

Bethlehem, PA  
800-801-1031

[www.mineralstech.com](http://www.mineralstech.com)

© Specialty Minerals Inc.  
03/2026

**Specialty**  
**MINERALS**  
A MINERALS TECHNOLOGIES COMPANY

All products are sold on the understanding that the user is solely responsible for determining their suitability for the intended use. All information given and recommendations made herein are based upon our research and are believed to be accurate, but no guarantee, either expressed or implied, is made with respect thereto or with respect to the infringement of any patent. SMI MAKES NO WARRANTY OF MERCHANTABILITY OR SUITABILITY FOR ANY PARTICULAR PURPOSE IN CONNECTION WITH ANY SALE OF THE PRODUCTS DESCRIBED HEREIN. Inconsistent terms and conditions contained in Buyer's purchase order shall not be binding on SMI unless reflected in writing signed by SMI's representative. This information is not to be copied, used in evidence, released for publication or public distribution without written permission from Specialty Minerals Inc.