

FEATURES

- ▶ Narrow Particle Size Distribution
- ▶ Fine Particle Size
- ▶ Process Controlled Top Size
- ▶ Surface Treated for Improved Polymer Compatibility

BENEFITS

- ▶ High filler loadings for reduced formulation cost
- ▶ Increased resin extension
- ▶ Improved impact strength
- ▶ Higher Gloss
- ▶ Improved Surface Appearance
- ▶ Consistent quality

SHIPPING INFORMATION

SUPER-PFLEX® series PCC ships from Adams, MA

Product is available in 50 lb. bags, supersacks, and bulk.

For availability and minimum order quantity, contact customer service.

SALES OFFICES

Adams, MA
877-684-7627

Bethlehem, PA
800-801-1031

www.mineralstech.com

▶ **GCC**

▶ **Talc**

▶ **Specialty PCC**

SUPER-PFLEX® Series

Precipitated Calcium Carbonate

Product Description

SUPER-PFLEX® series precipitated calcium carbonates are engineered sub-micron functional fillers which impart improved performance and mechanical properties to rigid PVC applications. Typical applications include injection molded housings and fittings, small diameter conduit and pipe, and extruded profiles and substrates. The small particle size and narrow particle size distribution permit exceptionally high filler loadings without compromising impact performance or ductility. The products in the SUPER-PFLEX series are surface treated with varying treatment levels to enable customers to optimize end formulations.

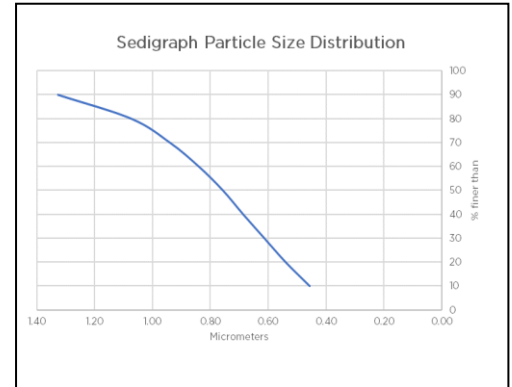
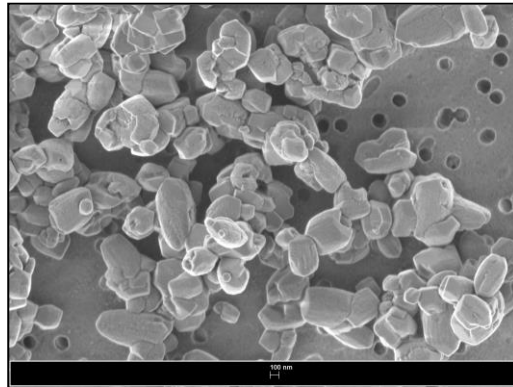
Typical Physical Properties

	SUPER-PFLEX® 100	SUPER-PFLEX® 200
Average Primary Particle Size (microns)	0.7	0.7
+325 Mesh Residue (weight percent)	0.03	0.03
Specific Gravity	2.7	2.7
Dry Brightness (Hunter Y, Rd Value)	97	97
Bulk Density (grams/cc)	0.48	0.48
Tap Density (grams/cc)	1.12	1.12
Surface Area (meters ² /gram)	7	7
Surface Treatment Level	1%	2%

Chemical Properties

Calcium Carbonate CaCO ₃	98%	98%
Moisture (% weight loss @110°C) H ₂ O	<0.5%	<0.5%

*SUPER-PFLEX is listed under the NSF generic listing program for CaCO₃
**Values listed are typical, not to be considered as specifications of the product



All products are sold or otherwise provided on the understanding that the Buyer or other user is solely responsible for determining their suitability for the intended use. All information provided is based upon our research, is typical of the products, and is believed to be accurate, but no guarantee, either expressed or implied, is made with respect thereto or with respect to the infringement of any patent. SMI MAKES NO WARRANTY OF MERCHANTABILITY OR SUITABILITY FOR ANY PARTICULAR PURPOSE IN CONNECTION WITH ANY SALE OR USE OF THE PRODUCTS DESCRIBED HEREIN. Inconsistent terms and conditions contained in Buyer's purchase order shall not be binding on SMI/BMI unless reflected in writing signed by SMI/BMI's representative. This information is not to be copied, used in evidence, released for publication or public distribution without written permission from Specialty Minerals Inc./Barretts Minerals Inc.

The Minerals Technologies Logo, Specialty Minerals Logo, and SUPER-PFLEX PCC are registered trademarks of Minerals Technologies Inc. or its subsidiaries.



Specialty
MINERALS