

PERFORMANCE MINERALS FOR SPECIALTY APPLICATIONS

MULTIFEX-MM®

precipitated calcium carbonate (pcc)

MULTIFEX-MM® precipitated calcium carbonate (pcc) is a unique non-surface treated, high performance, high purity ultrafine pcc with a controlled particle size and narrow distribution range. The high oil absorption and surface area characteristics, make MULTIFEX-MM® pcc effective as a rheological additive in aqueous adhesive and sealant systems where the presence of fatty acid coatings are unnecessary, such as in butyl sealants. With its unique characteristics MULTIFEX-MM® pcc is used as a reinforcing filler and nucleating agent in polymers, a detackifier in natural rubber products, and a flow agent in numerous aqueous systems including inks. MULTIFEX-MM® pcc can also act as a carrier for numerous catalyst, agrochemical and other systems requiring good dispersibility.

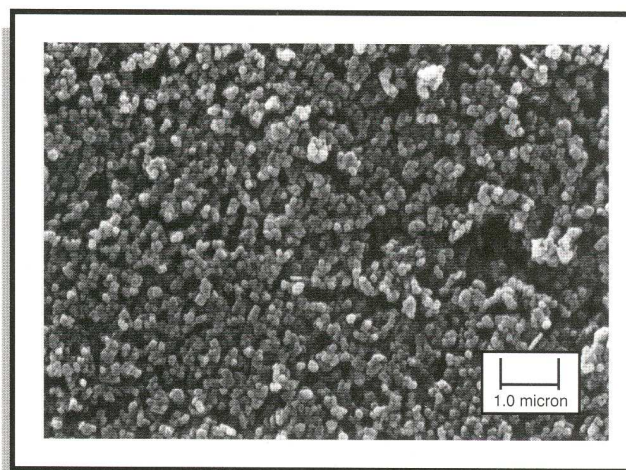
Typical Properties

Particle Shape	Rosette
Specific Gravity	2.7
Oil Absorption (grams/100 grams)	32
Dry Brightness (Hunter Y, Rd value)	.98
Loose Bulk Density (lbs./ft. ³)	15
Packed Bulk Density (lbs./ft. ³)	.24
Average Particle Size (micron)	.07

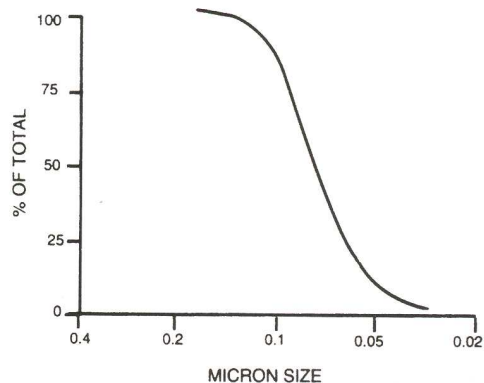
Chemical Composition

(typical) before treatment

Calcium Carbonate	CaCO ₃	98%
Magnesium Carbonate	MgCO ₃	<1%
Iron as	Fe ₂ O ₃	<0.1%
Moisture (% weight loss @ 110° C)	H ₂ O	<0.2%



PARTICLE SIZE DISTRIBUTION
(SIMULATED CURVE CONSTRUCTED FROM IMAGE ANALYSIS)



All products are sold on the understanding that the user is solely responsible for determining their suitability for the intended use. All information given and recommendations made herein are based upon our research and are believed to be accurate, but no guarantee, either expressed or implied, is made with respect thereto or with respect to the infringement of any patent. SMI MAKES NO WARRANTY OF MERCHANTABILITY OR SUITABILITY FOR ANY PARTICULAR PURPOSE IN CONNECTION WITH ANY SALE OF THE PRODUCTS DESCRIBED HEREIN. Inconsistent terms and conditions contained in Buyer's purchase order shall not be binding on SMI/BMI unless reflected in writing signed by SMI/BMI's representative. This information is not to be copied, used in evidence, released for publication or public distribution without written permission from Specialty Minerals Inc./Barretts Minerals Inc.

Sales Offices

Bethlehem, PA • (800) 801-1031
 Adams, MA • (800) 225-1156
 www.mineralstech.com

MULTIFEX-MM® is a registered trademark of Minerals Technologies Inc. or its subsidiaries
 © Specialty Minerals Inc. 1998

Printed on paper made with PCC from Specialty Minerals Inc.