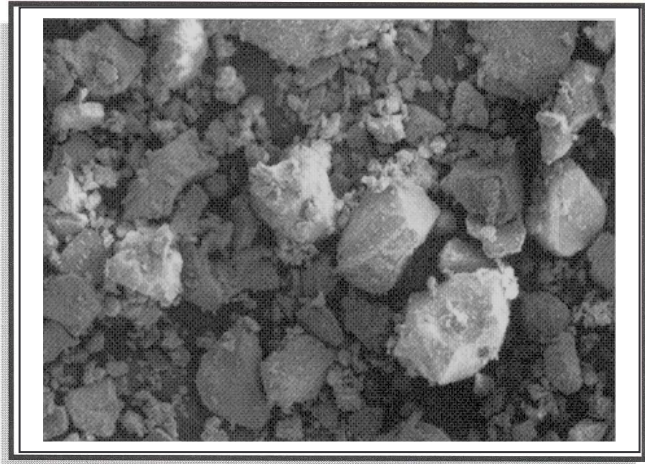


# ECO-CAL<sup>®</sup> LKD (Adams, MA)

## Calcium Carbonate Co-Product Series

Specialty Minerals' ECO-CAL<sup>®</sup> LKD is a co-product generated during the calcination of calcite ore mined in Adams, MA. ECO-CAL<sup>®</sup> LKD, commonly referred to as lime kiln dust (LKD), can be used in a myriad of applications (see below) as well as a lime replacement.

- cement
- waste sludge treatment - municipal, paper mills, heavy metals, pathogen treatment
- waste water treatment
- pH stabilization of sludge and ash
- acid neutralization
- soil stabilization
- flue gas desulfurization
- landfill capping
- agriculture (soil treatment)

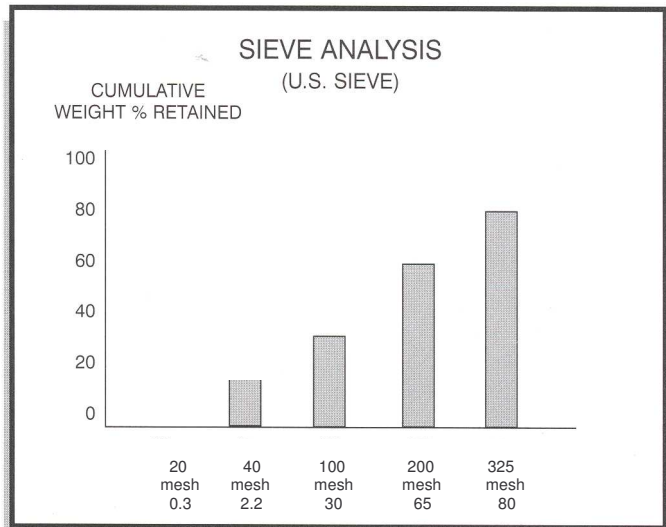


### Typical Properties

Specific Gravity	2.7
Dry Brightness (Hunter Y, Rd value)	74
Bulk Density (pounds/ft <sup>3</sup> ) poured	75-80
(pounds/ft <sup>3</sup> ) tapped	95-100

### Chemical Composition (typical)

Calcium Carbonate	CaCO <sub>3</sub>	61%
Total Calcium Oxide	CaO	56%
Available Calcium Oxide	CaO	27%
Magnesium Oxide	MgO	1%
Moisture (% weight loss @ 110° C)	H <sub>2</sub> O	<0.1%
Loss on Ignition L.O.I.		26
Total Alkali Content		89%
Total Neutralizing Value		109%



All products are sold on the understanding that the user is solely responsible for determining their suitability for the intended use. All information given and recommendations made herein are based upon our research and are believed to be accurate, but no guarantee, either expressed or implied, is made with respect thereto or with respect to the infringement of any patent. SMI MAKES NO WARRANTY OF MERCHANTABILITY OR SUITABILITY FOR ANY PARTICULAR PURPOSE IN CONNECTION WITH ANY SALE OF THE PRODUCTS DESCRIBED HEREIN. Inconsistent terms and conditions contained in Buyer's purchase order shall not be binding on SMI/BMI unless reflected in writing signed by SMI/BMI's representative. This information is not to be copied, used in evidence, released for publication or public distribution without written permission from Specialty Minerals Inc./Barretts Minerals Inc.

### Sales Offices

Bethlehem, PA 1-610-997-8394  
 Adams, MA (800) 225-1156  
 www.mineralstech.com

ECO-CAL<sup>®</sup> is a registered trademark of Minerals Technologies Inc. or its subsidiaries  
 ©Specialty Minerals Inc. Rev. 2003