

## DF 3015 (Canaan, CT) screened dolomitic limestone

DF 3015 screened dolomitic limestone is produced at our Canaan, CT plant, from a high quality, high brightness dolomite (calcium-magnesium carbonate). The first two digits in the code number indicate the approximate top mesh size. The last two digits indicate the approximate percent passing a 200 mesh sieve.

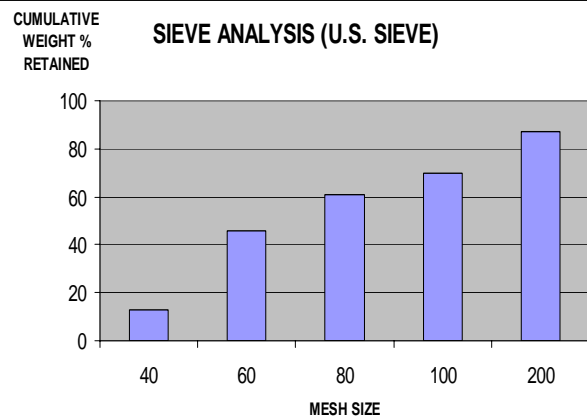
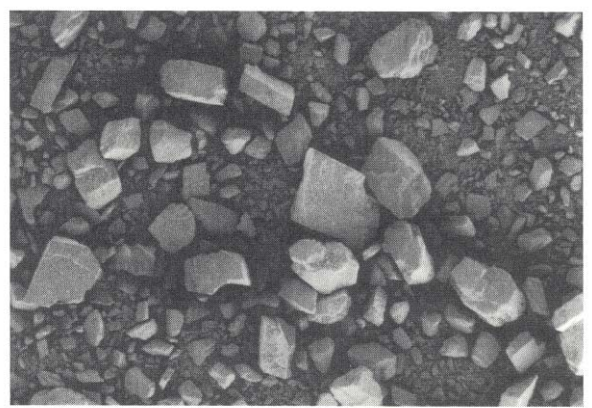
This material is used in a wide variety of industrial and agricultural applications, such as fillers in floor tiles, glass, soil treatment and acid neutralization.

### Typical Properties

Specific Gravity	2.8
Dry Brightness (Hunter Y, Rd value)	79
Bulk Density (pounds/ft <sup>3</sup> )	103
(grams/cc)	1.66

### Chemical Composition (typical)

Calcium Carbonate	CaCO <sub>3</sub>	55.0%
Magnesium Carbonate	MgCO <sub>3</sub>	43.0%
Iron as	Fe <sub>2</sub> O <sub>3</sub>	0.3%
Moisture	H <sub>2</sub> O	0.1%



All products are sold on the understanding that the user is solely responsible for determining their suitability for the intended use. All information given and recommendations made herein are based upon our research and are believed to be accurate, but no guarantee, either expressed or implied, is made with respect thereto or with respect to the infringement of any patent. SMI MAKES NO WARRANTY OF MERCHANTABILITY OR SUITABILITY FOR ANY PARTICULAR PURPOSE IN CONNECTION WITH ANY SALE OF THE PRODUCTS DESCRIBED HEREIN. Inconsistent terms and conditions contained in Buyer's purchase order shall not be binding on SMI/BMI unless reflected in writing signed by SMI/BMI's representative. This information is not to be copied, used in evidence, released for publication or public distribution without written permission from Specialty Minerals Inc./Barretts Minerals Inc.

### Sales Offices

Bethlehem, PA 1-610-997-8394  
Canaan, CT 1-866-840-6840  
www.mineralstech.com

DF 3015  
©Specialty Minerals Inc. 8/2013

