

Application of FERROTRON Laser Distance meters

Problem: Accurate Positioning of a **Ladle Car** at Steel Plant

Solution: Laser distance measuring instrument



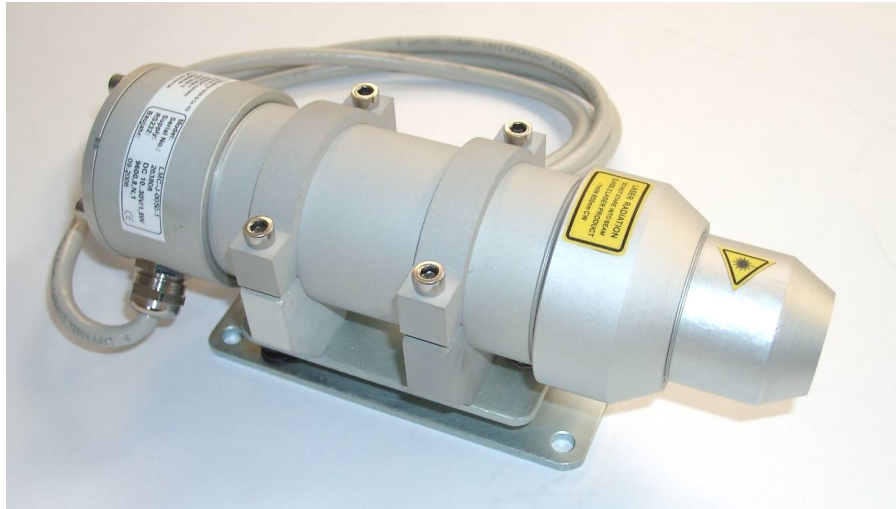
Advantage:

- Fast determination of the distance of a ladle car

Performance:

Measuring range:

- up to 25 m (natural targets), accuracy better 1 cm
- up to 100 m (150m) to white coloured targets



Features / Technical data

- *Visible Laser beam for alignment to the target (red light)*
- *Measurement rate: typical 5 Hz (10/50Hz possible)*
- *Class 2 Laser for eye safe operation.*
- *Reflector less measurement possible.*
- *Various data links are possible, like RS232/422, 4-20 mA, ProfiBus, CANopen, WLAN.*
- *Compact housing, developed for Steel industry, Dust and waterproof according to IP 66 (and special tubus).*
- *Optional air flush or water cooling possible.*
- *Reduced power consumption.*
- *Compact housing.*

Information contained herein is believed to be accurate and reliable. However, no responsibility is assumed by FERROTRON for its use. Technical data are subject to change without notice.

File: Pos_Ladle-FT-e.pdf

update: 2/2010