

# CETCO® TC BOOSTER

## THERMAL CONDUCTIVITY BOOSTER



### DESCRIPTION

CETCO TC BOOSTER is an additive used to boost the thermal conductivity of CETCO GEOTHERMAL GROUT. The shape of the CETCO TC BOOSTER is a large flake which maximizes the thermal conductivity potential while reducing the amount of dust produced when utilizing the product in the field. CETCO TC BOOSTER is certified to NSF/ANSI Standard 60, Drinking Water Treatment Chemicals – Health Effects.

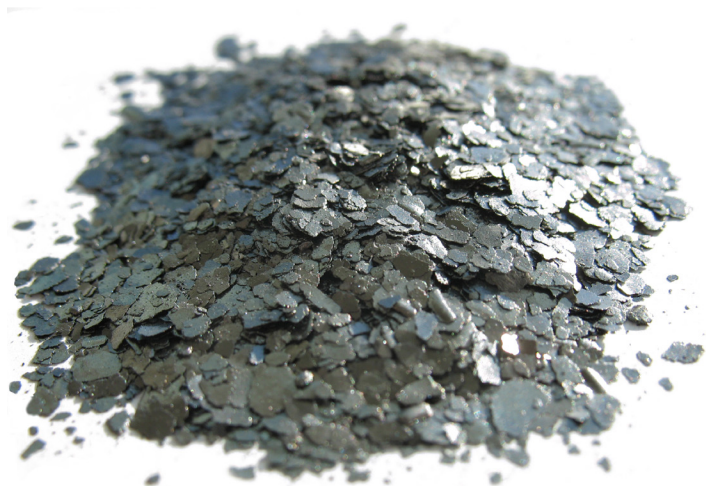
### RECOMMENDED USE

CETCO TC BOOSTER is a graphite product that has several uses. Uses include:

- ▶ Thermal Conductivity Booster for GEOTHERMAL GROUT™
- ▶ Additive to Increase Lubrication of Drilling Fluid
- ▶ Lost Circulation Additive
- ▶ Heat Dissipation Additive

### MIXING ORDER AND APPLICATION

1. Meter freshwater in a paddle-mixing tank of a commercial grout mixer.
  2. Start the grout mixer paddle, and add one 50 lb bag of CETCO GEOTHERMAL GROUT to the freshwater. Mix until GEOTHERMAL GROUT is hydrated and has an oatmeal consistency. If using sand, add sand at a steady rate, and continue mixing for another minute.
  3. Add CETCO TC BOOSTER to the mixer and stir until the CETCO GEOTHERMAL GROUT and the CETCO TC BOOSTER is homogenous.
  4. Pump through a tremie pipe at a rate of 5 to 15 gallons per minute.
- \*An increase or decrease in water by 1 gallon per batch can either decrease or increase TC values by approximately 15%.



### CETCO TC BOOSTER APPLICATION RATIOS

\*CONTACT US FOR SAND AND GRAPHITE MIXTURES

TARGET THERMAL CONDUCTIVITY Btu/hr/ft/F	1.0	1.2	1.4	1.6	1.9
LBS GEOTHERMAL GROUT	50	50	50	50	50
LBS TC BOOSTER	18	24	36	48	58
GALLONS FRESHWATER	15	15	15	16	17
GROUT WEIGHT (LBS/GAL)	10.57	10.72	10.92	11.03	11.24
GROUT VOLUME (GAL)	18.44	18.76	19.23	20.8	22.74
SPECIFIC GRAVITY (G/CC)	1.27	1.29	1.31	1.32	1.35

### PACKAGING

~24 lb bag (11 kg), 88 bags per pallet. All pallets are plastic-wrapped.

North America: 847.851.1800 | 800.527.9948 | [www.CETCO.com](http://www.CETCO.com)

UPDATED: OCTOBER 2019

© 2019 CETCO. IMPORTANT: The information contained herein supersedes all previous printed versions, and is believed to be accurate and reliable. For the most up-to-date information, please visit [www.CETCO.com](http://www.CETCO.com). CETCO accepts no responsibility for the results obtained through application of this product. All products are sold on the understanding that the user is solely responsible for determining their suitability for the intended use and for proper use and disposal of the product. CETCO MAKES NO WARRANTY OF MERCHANTABILITY OR SUITABILITY FOR ANY PARTICULAR PURPOSE IN CONNECTION WITH ANY SALE OF THE PRODUCTS DESCRIBED HEREIN. CETCO reserves the right to update information without notice.

