

RGT JUNCTION BOX

DESCRIPTION

RGT Junction Box is a molded PVC enclosure used to contain the terminal ends of CGT and RGT tubing. A gasketed screw cover offers access to the interior of the enclosure. RGT Junction Box can be encased in concrete.

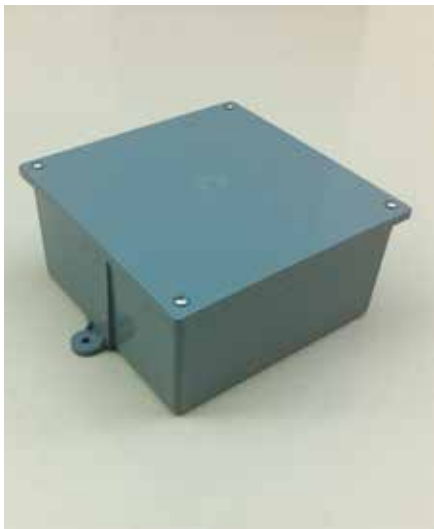
INSTALLATION

Place RGT Junction Box on the interior surface of the formwork. Secure the RGT Junction Box to the rebar cage by attaching to the two tabs located on the back of the box or by utilizing any other mechanical attachment means that do not penetrate the enclosure walls or distort the shape of the enclosure.

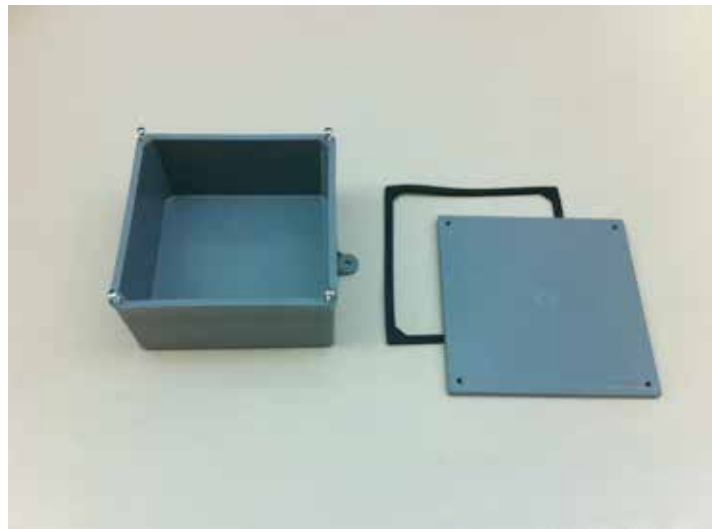
Field installation will require drilling an access hole in the side or rear of the box to tightly fit the outside diameter of CGT or RGT tubing.

PACKAGING

RGT Junction Boxes are packaged 5/box at 25 lbs/box, 18 boxes/pallet



Assembled RGT Junction Box



Enclosure, gasket and cover

PHYSICAL PROPERTIES	
PROPERTY	TYPICAL VALUE
Material	PVC
Wall Thickness	9.5mm (3/8")
Overall Dimensions (Length x Width x Height)	223mm (8 3/4") x 223mm (8 3/4") x 108mm (4 1/4")

North America: 847.851.1800 | 800.527.9948 | www.CETCO.com

UPDATED: JUNE 2015

© 2015 CETCO. IMPORTANT: The information contained herein supersedes all previous printed versions, and is believed to be accurate and reliable. For the most up-to-date information, please visit www.CETCO.com. CETCO accepts no responsibility for the results obtained through application of this product. All products are sold on the understanding that the user is solely responsible for determining their suitability for the intended use and for proper use and disposal of the product. CETCO MAKES NO WARRANTY OF MERCHANTABILITY OR SUITABILITY FOR ANY PARTICULAR PURPOSE IN CONNECTION WITH ANY SALE OF THE PRODUCTS DESCRIBED HEREIN. CETCO reserves the right to update information without notice.

