

# BLACKSEAL TG

## HIGH VISCIOUS RUBBER MODIFIED BITUMEN MASTIC

### DESCRIPTION

BLACKSEAL TG is a highly viscous, solvent free modified bitumen mastic. BLACKSEAL TG is used as gas and waterproofing trowel grade mastic for detailing of ground gas and waterproof membranes.

### APPLICATIONS

BLACKSEAL TG is an accessory product designed for the following uses:

- Fillet material at horizontal and vertical inside corners
- Flashing material around drains, mechanical and electrical penetrations, curbs and pile caps
- Sealing material at waterproofing/gas proofing terminations below-ground

### PRODUCT USE

Apply BLACKSEAL TG only under proper weather conditions [temperature > 10 °C and RH < 80%], because the water from the emulsion must evaporate to form a dense and homogeneous film. Stir before use and apply BLACKSEAL TG with a trowel, rubber squeegee, brush, mastic broom or roller. At average ambient conditions [20°C at 65% RH] setting of the emulsion will take a minimum 10 hours.

### FEATURES & BENEFITS

- Provides barrier resistance to liquid water, water vapor, and gas
- Fully-adhered mastic
- Application on various surfaces
- Solvent free

### GENERAL INSTALLATION GUIDELINES

The substrate should be clean, dry and dust free. The dosage of BLACKSEAL TG is determined by the texture of treated surface. Typical installation dosage: 1,5 – 2,0 kg/ m<sup>2</sup> per layer. Recommended final thickness of cured membrane: minimum 3 mm for flashings; minimum 20 mm for fillet.

### PACKAGING

BLACKSEAL TG is supplied in 25 kg pail; 24 pails per pallet.

### SAFETY, STORAGE & HANDLING INFORMATION

All construction products must be safely handled and properly stored. Users should carefully read the detailed precaution statements on product labels and the SDS before use.

[cetco@mineralstech.com](mailto:cetco@mineralstech.com) | [cetco.com](http://cetco.com)

UPDATED: SEPTEMBER 2022

© 2022 CETCO. IMPORTANT: The information contained herein supersedes all previous printed versions and is believed to be accurate and reliable. For the most up-to-date information, please visit [www.cetco.com](http://www.cetco.com). CETCO accepts no responsibility for the results obtained through application of this product. All products are sold on the understanding that the user is solely responsible for determining their suitability for the intended use and for proper use and disposal of the product. CETCO MAKES NO WARRANTY OF MERCHANTABILITY OR SUITABILITY FOR ANY PARTICULAR PURPOSE IN CONNECTION WITH ANY SALE OF THE PRODUCTS DESCRIBED HEREIN. CETCO reserves the right to update information without notice.



**CETCO**

## APPLICATION ILLUSTRATION

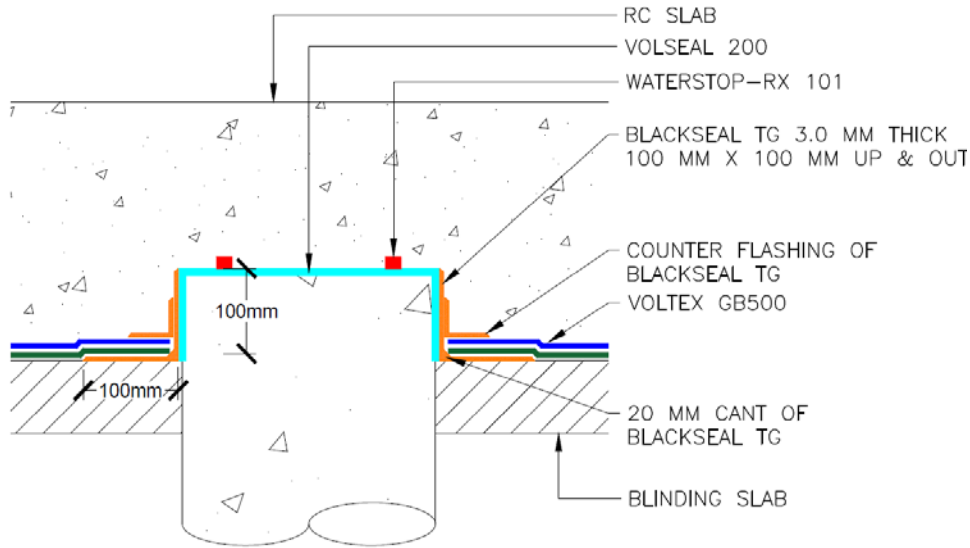


Figure 1. BLACKSEAL TG flashing detail around pile

TECHNICAL DATA		
PROPERTY	TEST METHOD	TYPICAL VALUE
<b>BLACKSEAL TG</b>		
pH	NEN-EN 12850	10-12
Viscosity 25 °C, Brookfield, Sp6	NEN-EN 13302	5000 – 7000 (cP)