

ULTRASEAL® AB

APC WATERPROOFING MEMBRANE
WITH ADVANCED BOND COATING



ULTRASEAL® AB

APC WATERPROOFING MEMBRANE WITH ADVANCED BOND COATING

CONTENTS

WHAT IS ULTRASEAL AB?
PRODUCT DESCRIPTION
ASSOCIATED SYSTEM PRODUCTS
ACCESSORIES
LIMITATIONS

INSTALLATION GUIDELINES

SECTION 1: UNDERSLAB INSTALLATION

- 1.1 Substrate Preparation
- 1.2 Installation
- 1.3 Pile Caps & Grade Beams
- 1.4 Slab Penetrations
- 1.5 Elevator Pits
- 1.6 Edge of Slab, Backfilled Walls
- 1.7 Edge of Slab, Property Line Walls

SECTION 2: PROPERTY LINE CONSTRUCTION

- 2.1 Property Line Installation Guidelines
- 2.2 Soldier Pile & Lagging
- 2.3 Metal Sheet Piling Retaining Wall
- 2.4 Earth Formed Shotcrete Retention
- 2.5 Auger Cast Caisson Retention Wall

SECTION 3: BACKFILLED WALLS

- 3.1 Surface Preparation
- 3.2 Installation
- 3.3 Backfilled Wall Penetrations
- 3.4 Terminations
- 3.5 Masonry Block Walls

SECTION 4: SPECIAL CONDITIONS

- 4.1 Precast Concrete Construction
- 4.2 Contaminated Conditions

THIS MANUAL CONTAINS THE INSTALLATION GUIDELINES FOR THE ULTRASEAL AB WATERPROOFING SYSTEM FOR CAST-IN-PLACE CONCRETE APPLICATIONS, INCLUDING UNDERSLAB, PROPERTY LINE WALLS, AND BACKFILLED WALLS. THIS MANUAL DOES NOT COVER SHOTCRETE OR PRECAST CONCRETE APPLICATIONS. FOR APPLICATIONS NOT COVERED IN THIS MANUAL, CONTACT CETCO FOR SPECIFIC INSTALLATION GUIDELINES. BEFORE INSTALLATION, READ THIS MANUAL TO GAIN FAMILIARITY WITH SPECIFIC PROCEDURES AND APPLICATIONS. IN THIS MANUAL ILLUSTRATIONS ARE NOT SHOWN TO SCALE.

WHAT IS ULTRASEAL AB?

ULTRASEAL AB is a unique waterproofing membrane comprised of a polyethylene liner and an advanced Active Polymer Core (APC) layer integrally bonded to an aggressive pressure sensitive adhesive that locks the membrane to concrete. The active hydrophilic polymer APC layer swells and seals against water ingress while the aggressive adhesive bond to concrete prevents migration of water. Thus this advanced membrane combines two proven technologies into one membrane to provide excellent waterproofing performance.

The aggressive adhesive bond is formed by pouring concrete directly against the membrane. The bond provides lateral water migration resistance continuously across the exterior surface of the concrete and ensures ULTRASEAL AB remains bonded to the concrete. Unlike other adhesive-bonding membranes, the APC Technology layer can seal small punctures and tears in the membrane resulting from construction activities conducted after the initial membrane installation. This active waterproofing sealing performance, in conjunction with the continuous adhesive bond, prevents water movement between the ULTRASEAL AB membrane and the concrete.

The APC Technology layer works by forming a very low permeable membrane layer upon contact with water. When hydrated, unconfined APC can swell many times its dry volume. When confined by backfill or concrete the swell is controlled, forming a dense, impervious waterproofing layer. The swelling action of the APC technology resists high levels of groundwater contaminants and can seal small concrete cracks caused by ground settlement, concrete shrinkage, or seismic action.

ULTRASEAL AB contains zero VOC, can be installed in almost any weather condition and most importantly has proven effective in both hydrostatic and non-hydrostatic conditions.

ADVANTAGES

Compared to traditional active waterproofing products, ULTRASEAL AB is lighter, more impervious, and more resistant to contaminated water conditions. ULTRASEAL AB rolls are lightweight and easy to handle. Despite the lighter weight, the APC is one order of magnitude less permeable than bentonite, meaning that it will deliver tenfold performance increase under most conditions. Finally, ULTRASEAL AB has improved performance in salt water conditions over bentonite waterproofing membranes.

SUPERIOR ADHESION

When concrete is poured against ULTRASEAL AB, a tenacious bond is created with the aggressive adhesive of the membrane composite. The continuous bond will be created with the membrane composite. The mechanical bond will hold ULTRASEAL AB in intimate contact with the concrete should any ground settlement occur, thereby preventing water migration between the waterproofing and the concrete.

COST EFFECTIVE AND TIME EFFICIENT

ULTRASEAL AB is designed to be installed on a properly prepared subgrade, without the need to pour a working slab. The product's inherent flexibility allows for easy installation. ULTRASEAL AB can be installed as soon as the forms are removed; there is no waiting for the concrete to cure before installing the waterproofing.

ASSOCIATED SYSTEM PRODUCTS

AQUADRAIN® – foundation drainage composite consisting of a molded profile core and a filter fabric. Includes sheet drainage and base drain collection.

CEMENTITIOUS BOARD (By Others) – 12 mm (1/2") thick cementitious wall board for protection of waterproofing during the removal of steel soldier pile cap and top lagging boards.

CXJ-200/CXJ-400 – extruded thermoplastic dual-cell center gland expansion joint with integrated side flashings that can be tied in with ULTRASEAL AB.

TERMINATION BAR (By Others) – min. 25 mm (1") wide aluminum or stainless steel bar with pre-punched holes on 300 mm (12") centering for fastening.

WATERSTOP-RX® – expanding concrete joint waterstop used around penetrations and applicable concrete joints. Swells upon hydration.

ACCESSORIES

BENTOSEAL® – trowel grade mastic used to detail around penetrations, corner transitions and terminations.

CETSEAL – single-component polyether general sealant and adhesive.

ENVIROSHEET – self-adhering flashing membrane used for grade and thru-wall flashing.

HYDROBAR TUBES® – water soluble film tubing filled with active granular material.

SEAMTAPE – premium tape used to seal overlapped membrane edges of ULTRASEAL AB.

TB-BOOT – pre-formed, single piece cover for tie-back heads and soil nails. Four sizes available: TB-3, TB-6SN, TB-8 & TB-10

WATERSTOPPAGE – active granular material used at detail areas that require additional protection.

LIMITATIONS

ULTRASEAL AB should only be installed after substrate preparation has been properly completed and is suitable to receive the waterproofing system. Concrete work should use conventional cast-in-place forms that produce a smooth surface. Do not use stay-in-place concrete forming; use removable forming products only.

ULTRASEAL AB is designed for below-grade waterproofing applications where the product is properly confined. ULTRASEAL AB should not be installed in standing water or over ice. If ground water contains strong acids, alkalis, or is of a conductivity of 2,500 µmhos/cm or greater, water samples should be submitted to the manufacturer for compatibility testing.

ULTRASEAL AB is designed for use under reinforced concrete slabs 100 mm (4") thick or greater on a compacted earth/gravel substrate. ULTRASEAL AB requires a minimum 150 mm (6") thick reinforced concrete slab if installed over a mud slab. ULTRASEAL AB is not designed for split-slab plaza deck construction and vegetated greenroofs. Do not use to waterproof masonry block foundation walls.

ULTRASEAL AB is capable of bridging typical shrinkage cracks in concrete up to 1.5 mm (1/16").

ULTRASEAL AB is not designed to waterproof expansion joints. Consult CETCO for special installation guidelines that apply to shotcrete and precast concrete construction.



CETCO®

ULTRASEAL® AB APC WATERPROOFING MEMBRANE WITH ADVANCED BOND COATING

INSTALLATION GUIDELINES

Before installing ULTRASEAL AB read this installation manual to gain familiarity with specific procedures and applications. For applications not covered in this manual, contact CETCO for specific installation guidelines.

SECTION 1 UNDERSLAB INSTALLATION

ULTRASEAL AB is engineered for use under reinforced concrete slabs 100 mm (4") thick or greater on a compacted earth/gravel substrate. ULTRASEAL AB requires a minimum 150 mm (6") thick reinforced concrete slab if installed over a mud slab.

For hydrostatic conditions, ULTRASEAL AB should be installed under footings and grade beams as shown in Figures 1.6, 1.7 and 1.8. For non-hydrostatic conditions, ULTRASEAL AB should be installed around footings and grade beams as shown in Figures 1.9, 1.10 and 1.11.

Prior to installing ULTRASEAL AB the substrate must be properly prepared. Complete all required elevator pit, sump pit, grade beam and piling work prior to installing ULTRASEAL AB under main slab area. These areas must be correctly tied into the underslab waterproofing to form a monolithic seal.

1.1 SUBSTRATE PREPARATION

Substrate may be concrete, earth, sand, or crushed stone. Earth and sand substrates should be compacted to a minimum 85% Modified Proctor density. Crushed stone should be no larger than 20 mm (3/4") in size. Substrate should be smooth and without sharp deflections or pockets.

1.2 INSTALLATION

Place ULTRASEAL AB onto the properly prepared substrate with the adhesive coated side up. Overlap all adjoining membrane edges a minimum 100 mm (4") and stagger sheet ends a minimum 300 mm (12"). Staple or nail membrane overlap edges together 450 mm (18") on center to prevent displacement before and during concrete placement.

When the slab is poured in sections, ULTRASEAL AB should extend a minimum 300 mm (12") beyond the slab edge (Figure 1.3). This enables ULTRASEAL AB to be properly overlapped for subsequent slab section pours. WATERSTOP-RX should be installed in all applicable slab construction joints (Figure 1.3).

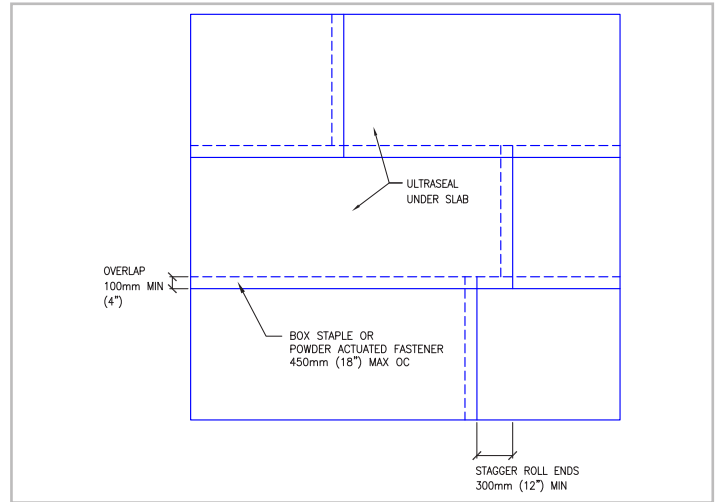


Figure 1.1 – Overlap edges 100 mm (4") with seams staggered 300 mm (12")

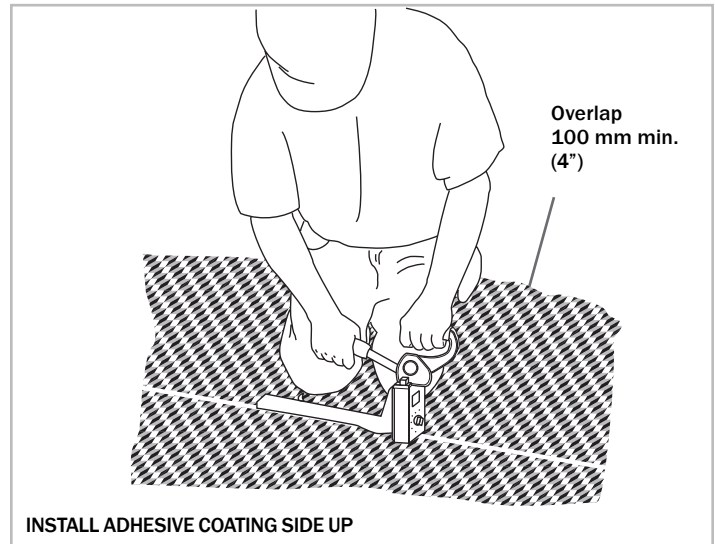


Figure 1.2 – Secure overlaps together with fasteners

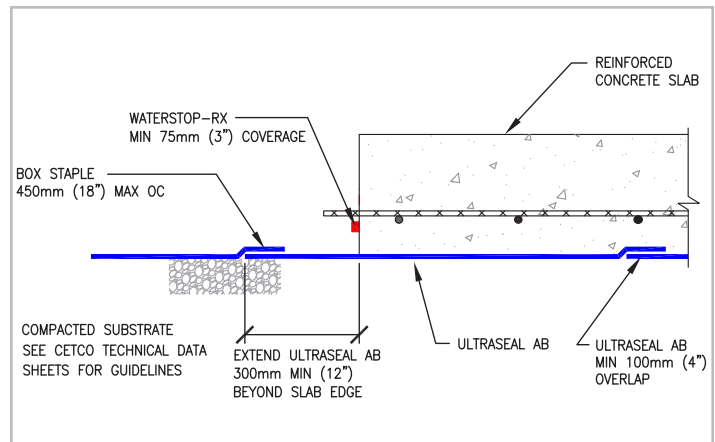


Figure 1.3 – Extend ULTRASEAL AB a minimum 300 mm (12") beyond slab edge. Install WATERSTOP-RX in joint

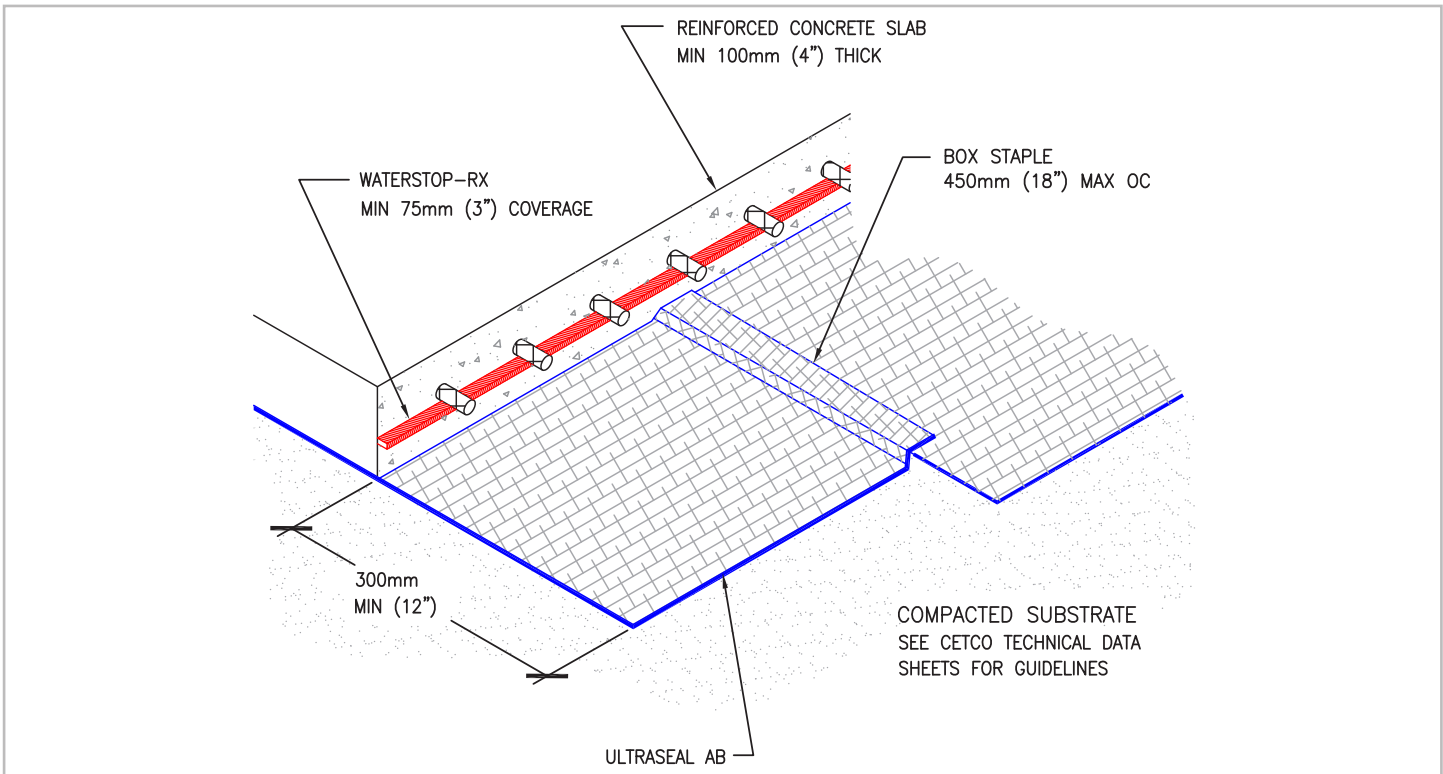


Figure 1.4 - ULTRASEAL AB installed directly over compacted earth/gravel substrate requires a minimum 100 mm (4") slab

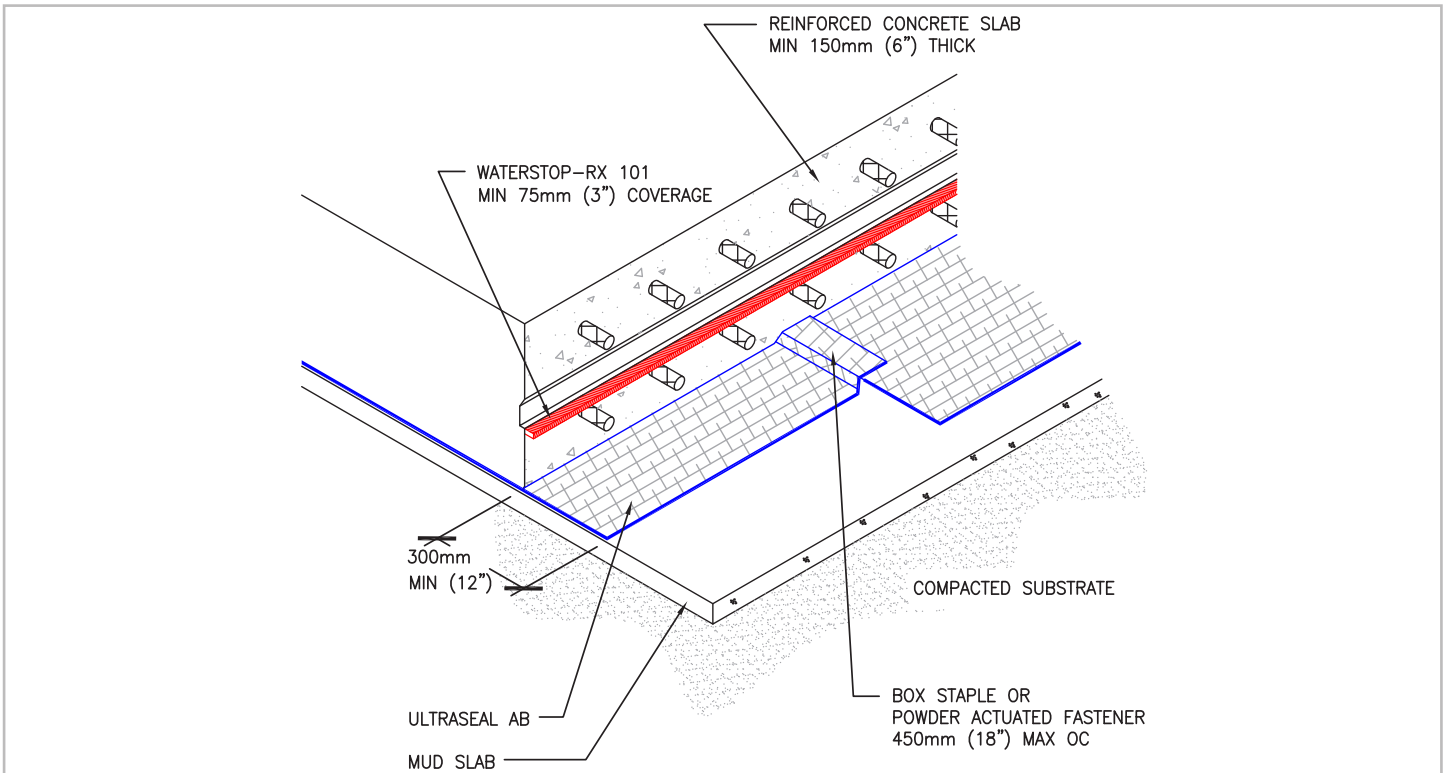


Figure 1.5 - ULTRASEAL AB installed over a mud slab requires a minimum 150 mm (6") thick reinforced slab

ULTRASEAL® AB APC WATERPROOFING MEMBRANE WITH ADVANCED BOND COATING

HYDROSTATIC CONDITIONS

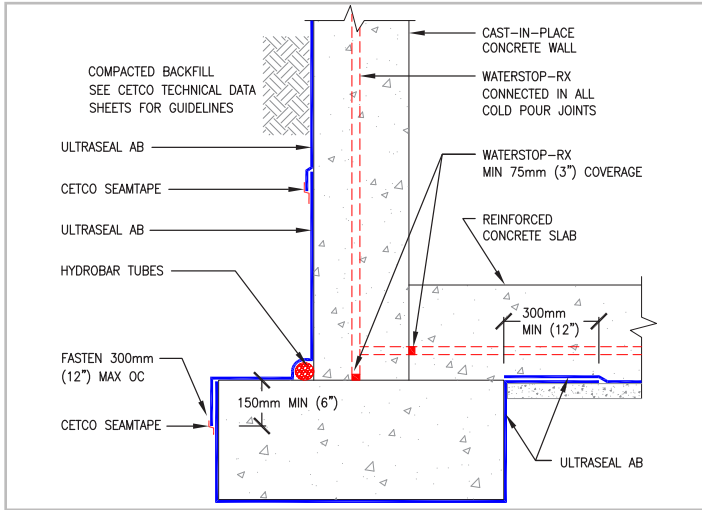


Figure 1.6 – Slab on footing detail (hydrostatic)

NON-HYDROSTATIC CONDITIONS

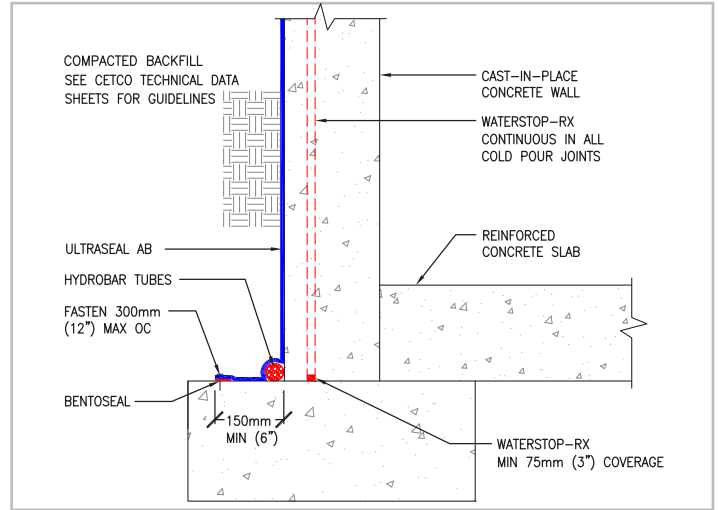


Figure 1.9 – Slab on footing detail (non-hydrostatic)

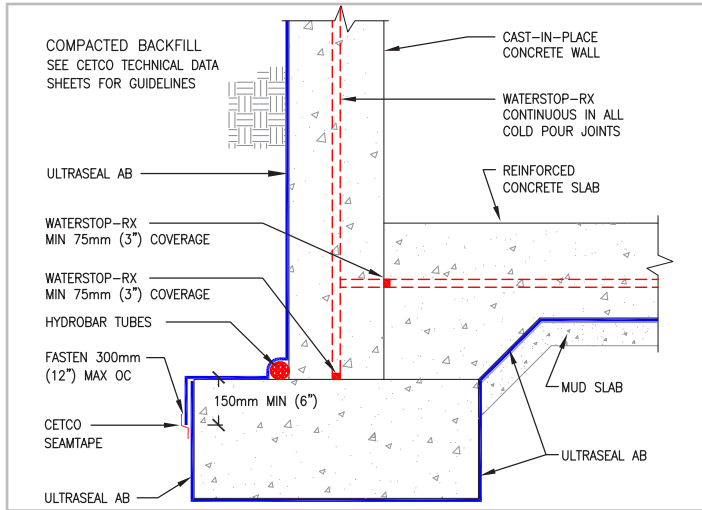


Figure 1.7 – Raised slab detail with mud slab (hydrostatic)

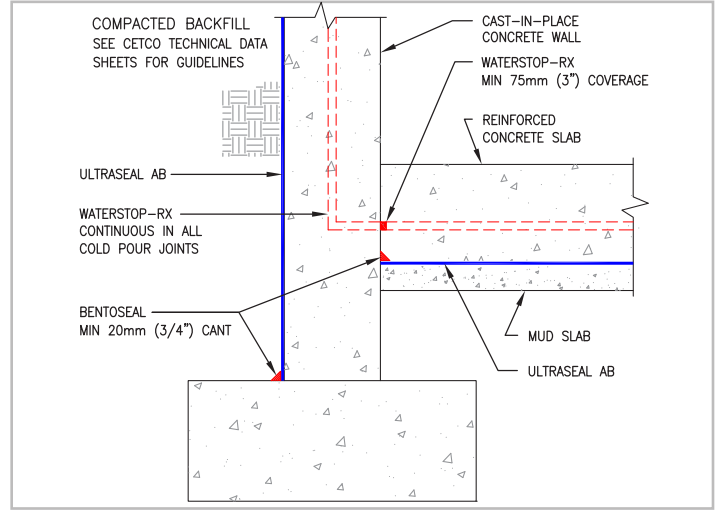


Figure 1.10 – Raised slab detail with mud slab (non-hydrostatic)

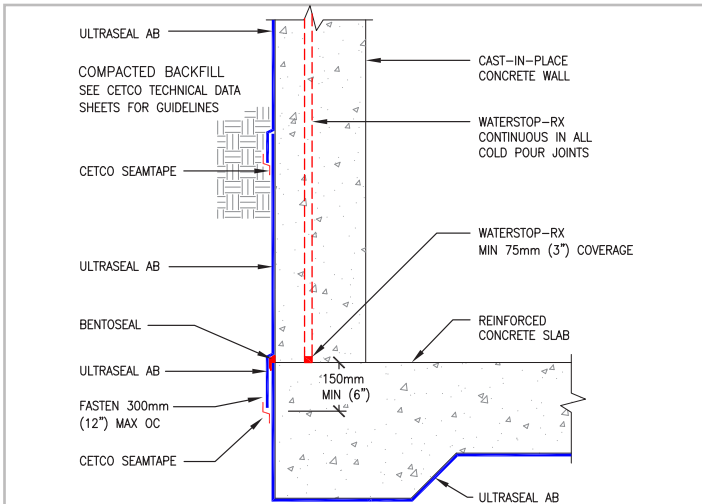


Figure 1.8 – Flush slab detail property line wall (hydrostatic)

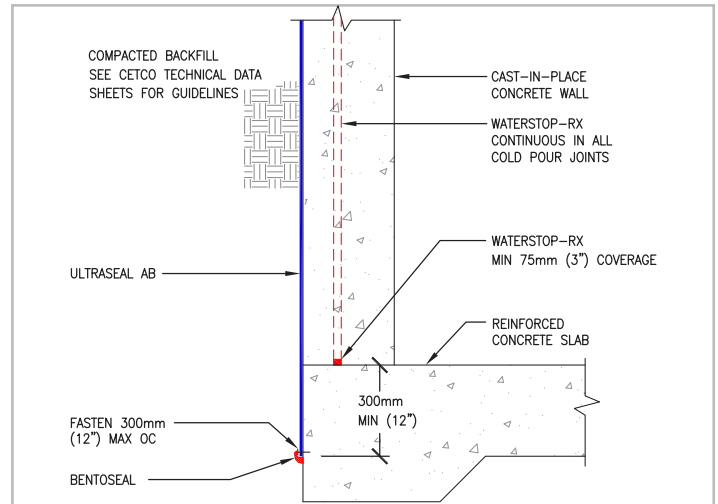


Figure 1.11 – Flush slab detail backfilled wall (non-hydrostatic)

1.3 PILE CAPS AND GRADE BEAMS

ULTRASEAL AB is typically not installed over pile caps but cut to fit tightly around pile caps. Then apply a minimum 20 mm (3/4") thick fillet of BENTOSEAL at intersection of membrane and the piling (Figure 1.12) with WATERSTOPPAGE under the membrane at the piling edge. BENTOSEAL should extend onto the membrane and piling a minimum of 50 mm (2") at 20 mm (3/4") thickness. WATERSTOP-RX should be installed on top surface of pile cap around reinforcing steel (Figure 1.12).

Detail grade beams the same as pile caps (Figure 1.14) with a non-hydrostatic condition. For hydrostatic conditions, ULTRASEAL AB should be installed under the entire grade beam (Figure 1.15). Line the grade beam formwork with ULTRASEAL AB prior to placement of reinforcing steel. Leave a minimum 300 mm (12") of ULTRASEAL AB at the top of the form to tie into below slab waterproofing.

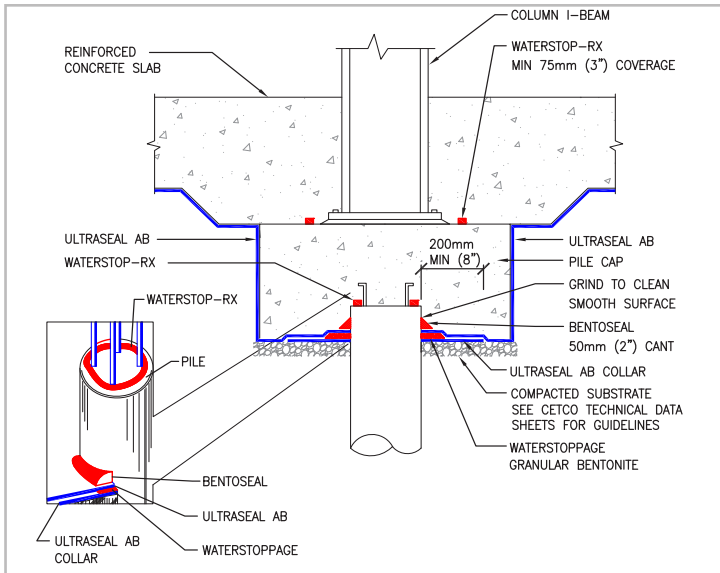


Figure 1.12 - Pile Cap Detail (Hydrostatic condition)

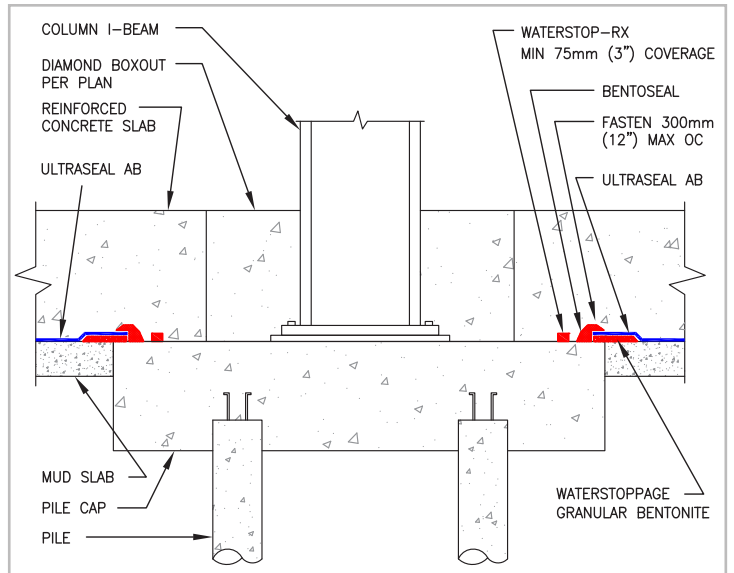


Figure 1.12 - Pile Cap Detail (Hydrostatic condition)

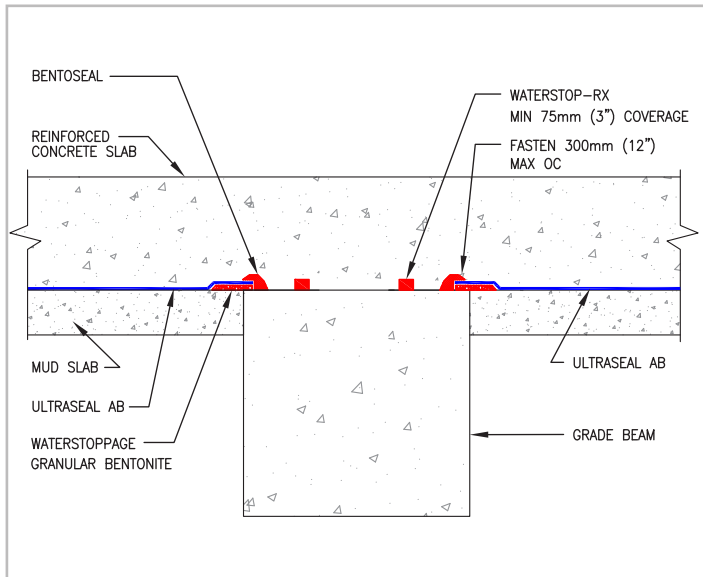


Figure 1.14 - Grade Beam (Non-hydrostatic condition)

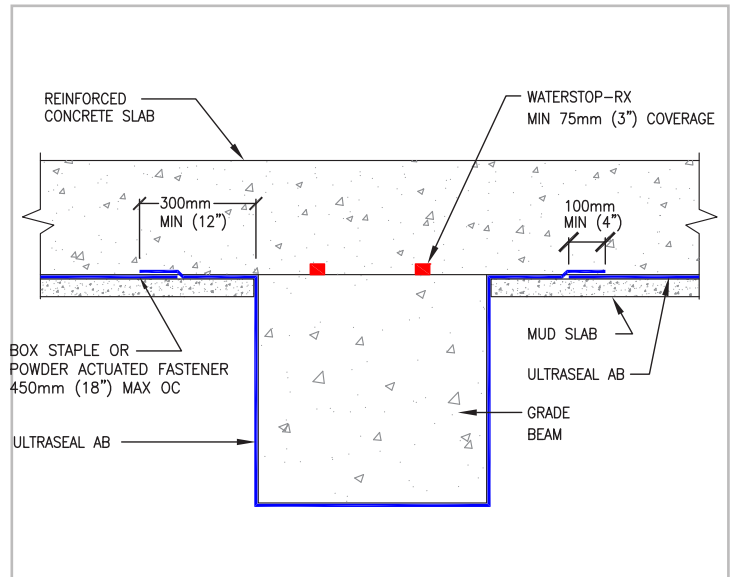


Figure 1.15 - Grade Beam (Hydrostatic condition)

ULTRASEAL® AB APC WATERPROOFING MEMBRANE WITH ADVANCED BOND COATING

1.4 SLAB PENETRATIONS

Cut ULTRASEAL AB to closely fit around penetrations (Figure 1.16). Trowel a minimum 20 mm (3/4") thick fillet of BENTOSEAL around the penetration to completely fill any void area between ULTRASEAL AB and the penetration (Figure 1.17). The BENTOSEAL should extend up the penetration about 38 mm (1-1/2") and extend onto the membrane. In areas where multiple penetrations are close together, it may be impractical to cut ULTRASEAL AB to fit

around each penetration. Pour WATERSTOPPAGE a minimum 6 mm (1/4") thick around the penetrations covering the entire substrate area. With gravel substrate, install minimum 200 mm (8") collar of ULTRASEAL AB around penetration prior to placing WATERSTOPPAGE. Then apply a thick layer of BENTOSEAL around each penetration as detailed (Figure 1.19).

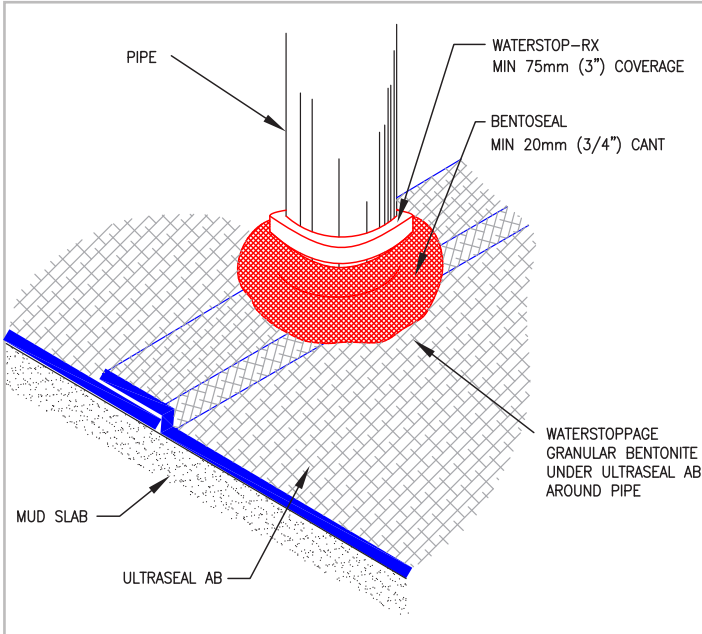


Figure 1.16 – BENTOSEAL troweled around penetrations

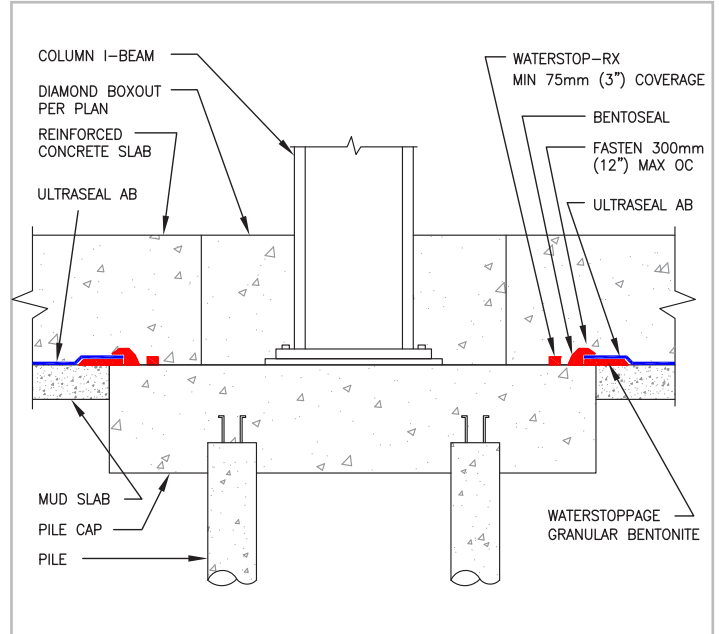


Figure 1.17 – Slab penetration cross section detail

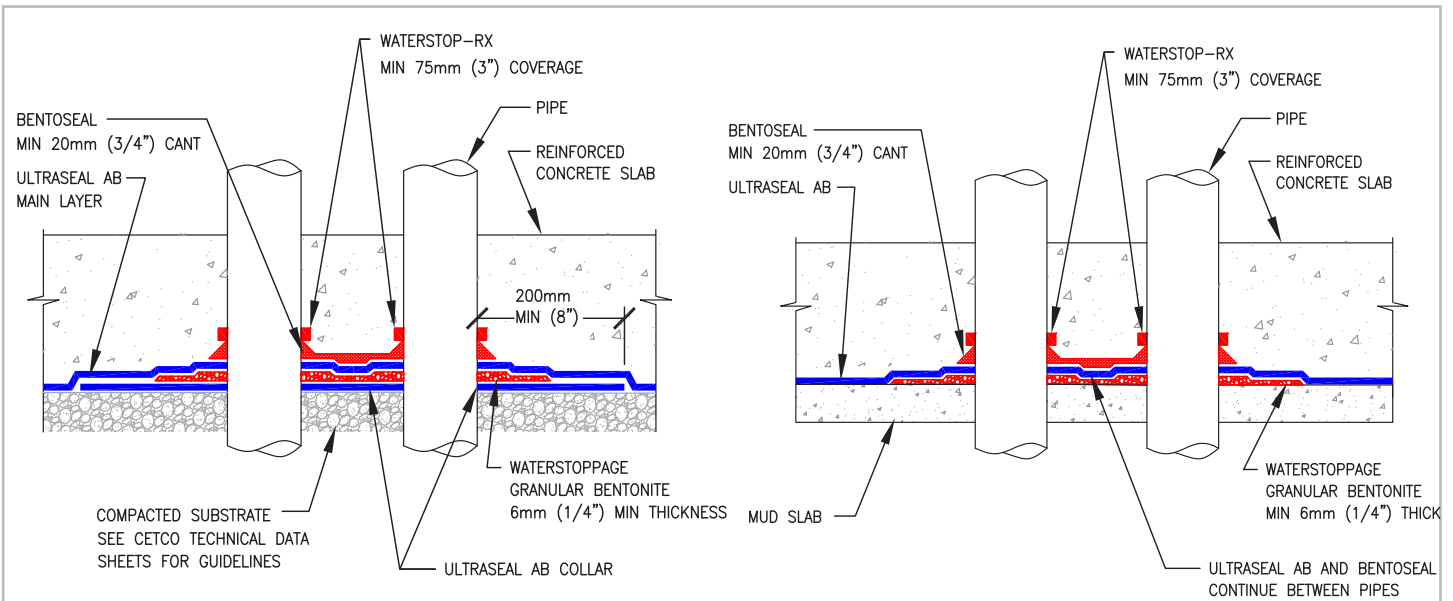


Figure 1.18 – Multiple pipe penetrations. Trowel BENTOSEAL around pipes and covering area between the pipes

1.5 ELEVATOR PITS

ULTRASEAL AB should be placed on vertical surfaces and on the substrate below the slab to form a continuous envelope around the elevator pit (Figure 1.19). If the vertical soil cut is smooth and stable, ULTRASEAL AB may be installed directly against the soil. Contain unstable soils with a retaining wall.

Install ULTRASEAL AB directly against the retaining wall. Due to various elevator piston plunger designs, consult CETCO for installation and detailing recommendations for piston plungers that penetrate the pit slab.

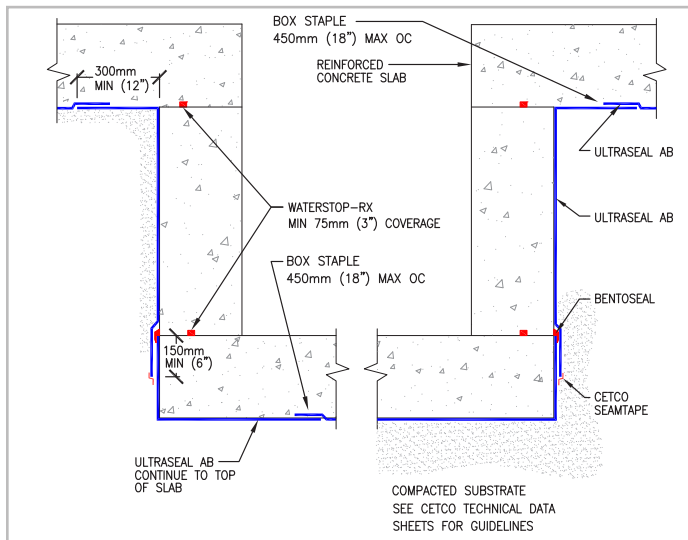


Figure 1.19 - ULTRASEAL AB under elevator pit slab and on excavation cut walls

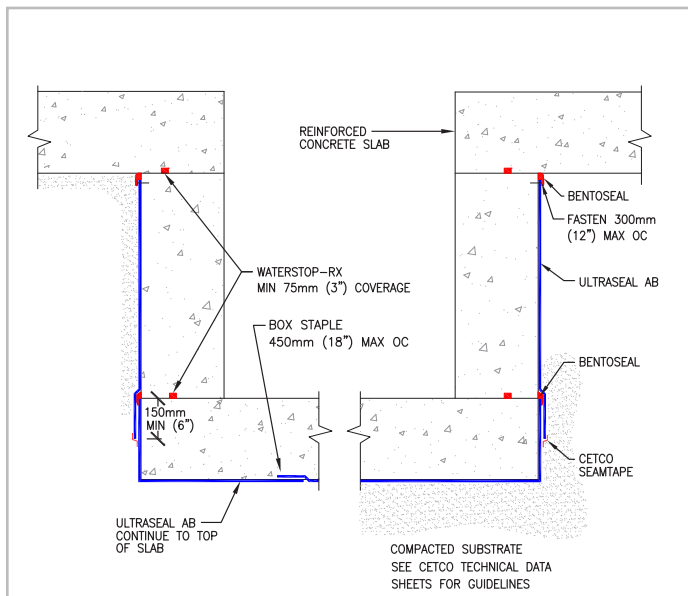


Figure 1.20 - ULTRASEAL AB under elevator pit slab and on excavation cut walls

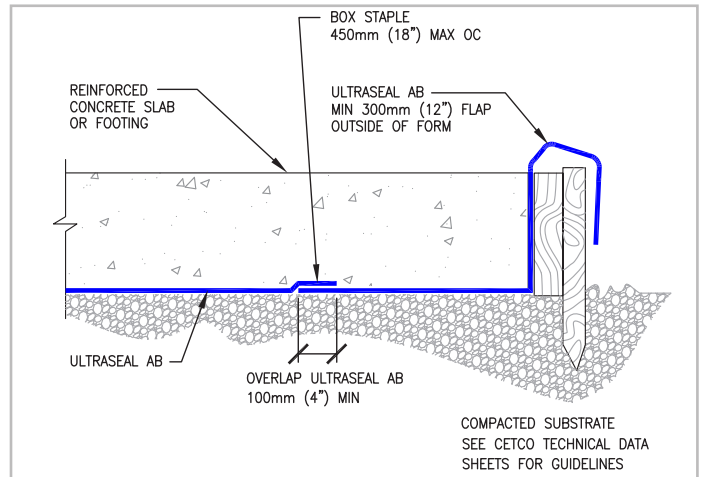


Figure 1.21 - Extra tail of ULTRASEAL AB extended out of form and later cut off after concrete pour

1.6 EDGE OF SLAB, BACKFILLED WALLS

When the installation reaches the outer edge of the slab, continue ULTRASEAL AB up to the top edge of the forms inside surface (Figure 1.21) or extend the ULTRASEAL AB sheet out the top of the form a minimum of 300 mm (12") (Figure 1.22). At the slab corner, ULTRASEAL AB should remain in contact with the substrate and the inside surface of the concrete form. When the slab edge form is removed, any undamaged portion of ULTRASEAL AB extended outside the form should be positioned and secured to the top of the footing.

Damaged material outside the form should be cut off and disposed of. Overlap the secured ULTRASEAL AB edge on top of the footing a minimum 150 mm (6") with the succeeding wall waterproofing. Install Hydrobar Tubes at wall-to-footing corner prior to installing overlapping wall waterproofing.

WATERSTOP-RX should be installed in the perimeter wall/slab intersection joint as illustrated in Figure 1.22.

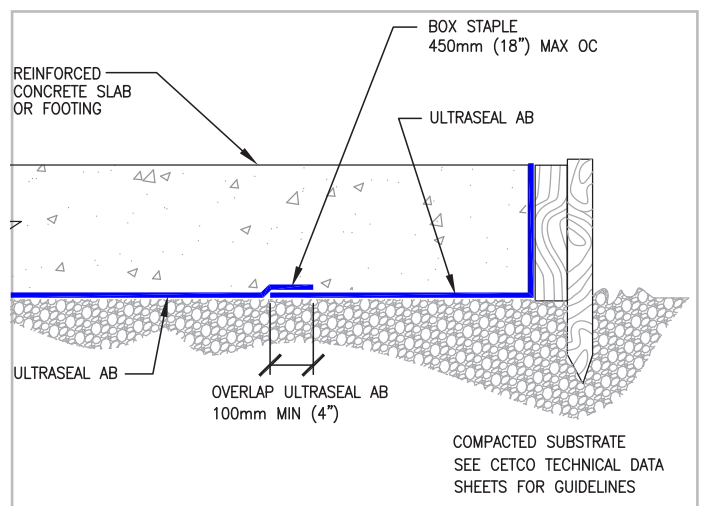


Figure 1.22 - ULTRASEAL AB turned up and secured at top of concrete form

ULTRASEAL® AB APC WATERPROOFING MEMBRANE WITH ADVANCED BOND COATING

1.7 EDGE OF SLAB, PROPERTY LINE CONSTRUCTION

Where property line retaining walls, such as soldier pile and lagging, are used as the outside form, it is very important to extend the waterproofing a minimum 300 mm (12") above the top of the slab since there is no access to the outer edge of the slab after it is poured.

Slab to Wall Corner Transition: Install ULTRASEAL AB sheet horizontally oriented with a minimum 300 mm (12") of the sheet extending out onto the horizontal substrate. The top edge of the sheet must extend a minimum 300 mm (12") above the finished slab surface. Secure ULTRASEAL AB sheet to lagging wall with washer-head fastener maximum 600 mm (24") on center. Overlap edges of adjacent ULTRASEAL AB sheets a minimum 100 mm (4").

If the slab thickness is greater than 600 mm (24"), install a second full sheet or cut strip of ULTRASEAL AB, horizontally oriented, to meet the 300 mm (12") requirement above the slab. Overlap top edge of previous sheet and edges of adjacent sheets a minimum 100 mm (4").

Base Wall Course: Install first ULTRASEAL AB sheet course on the shoring wall horizontally oriented over the corner transition sheet, with the bottom edge extending down to the wall/slab transition corner as shown in Figure 1.22. Secure ULTRASEAL AB sheet to lagging wall with washer-head fasteners maximum 600 mm (24") on center. Overlap edges of adjacent ULTRASEAL AB sheets a minimum 100 mm (4").

Install underslab ULTRASEAL AB membrane extending to corner transition, overlapping the 300 mm (12") sheet tail of the corner transition sheet installed at the wall base. Secure corner edge with fasteners 300 mm (12") on center.

For metal sheet piling shoring walls, first install the ULTRASEAL AB corner transition sheet horizontally oriented with the bottom edge extending minimum 300 mm (12") out onto the substrate. Cut the bottom edge of the corner transition sheet at piling transition angles to allow the bottom edge to lay flat onto the substrate. Pour 38 mm (1 1/2") continuous cant of WATERSTOPPAGE along base of shoring wall. Then install underslab ULTRASEAL AB sheet cut to fit contours of metal sheet piling. Finally, install the base shoring wall ULTRASEAL AB sheet (horizontally oriented) overlapping the corner transition sheet.

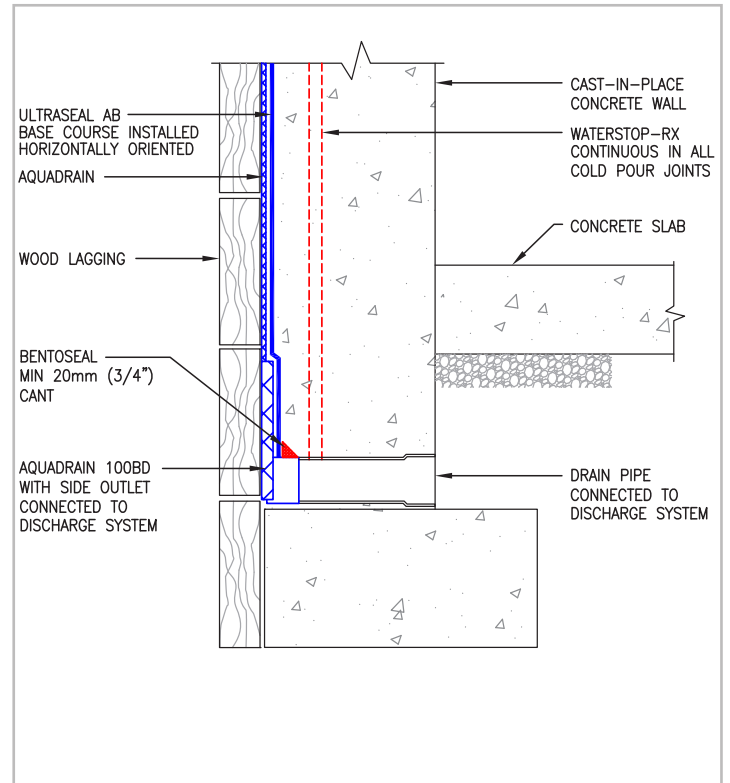
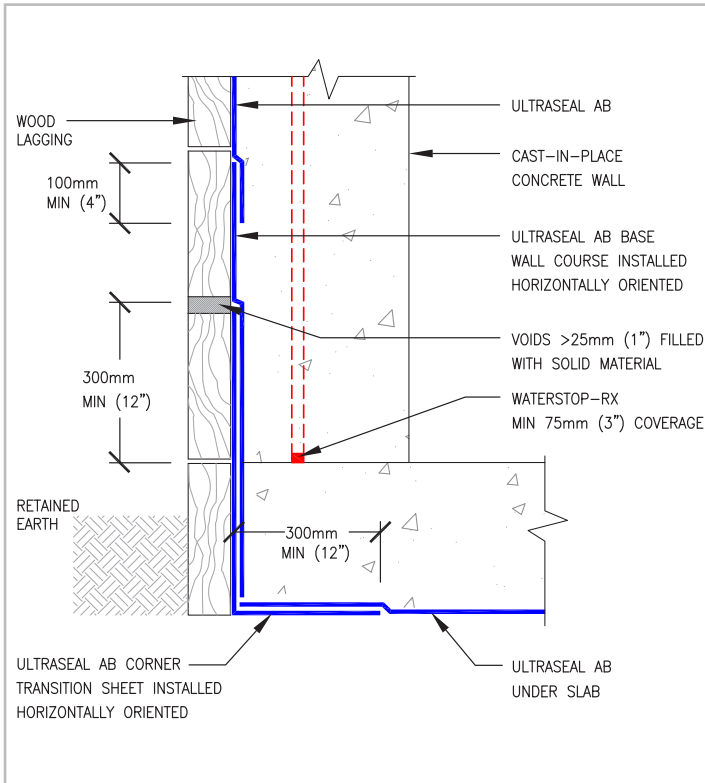


Figure 1.22 - SLAB-TO-WALL TRANSITION - ULTRASEAL AB corner transition sheet should extend past the height of the top of the finished slab level a minimum 300 mm (12") and extend under the slab 300 mm (12")

Figure 1.23 - RAISED SLAB CONDITION - Connect AQUADRAIN 100 BD to water discharge pipes using 100 BD accessory connections

SECTION 2 PROPERTY LINE CONSTRUCTION

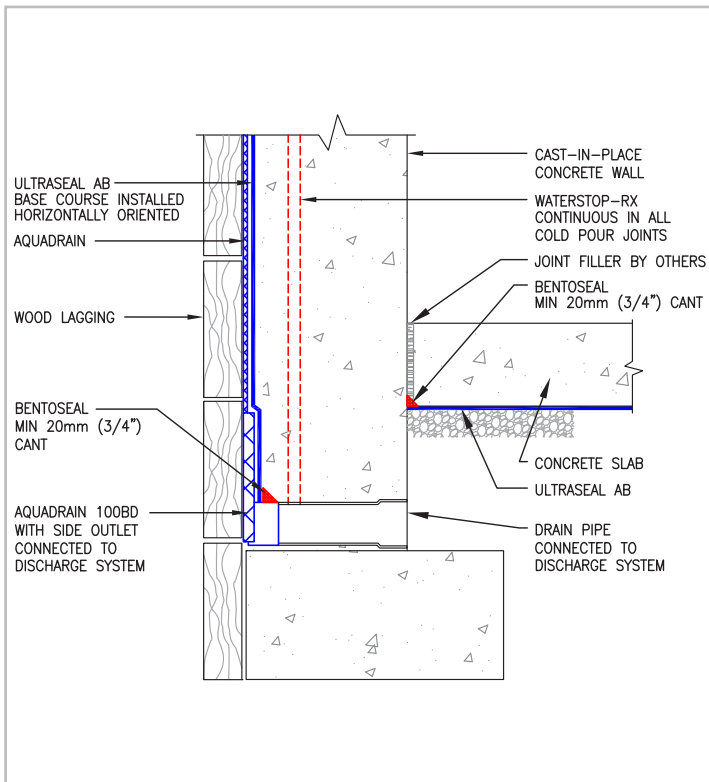


Figure 1.24 – RAISED SLAB CONDITION – Connect AQUADRAIN 100BD to water discharge pipes using 100BD accessory connectors

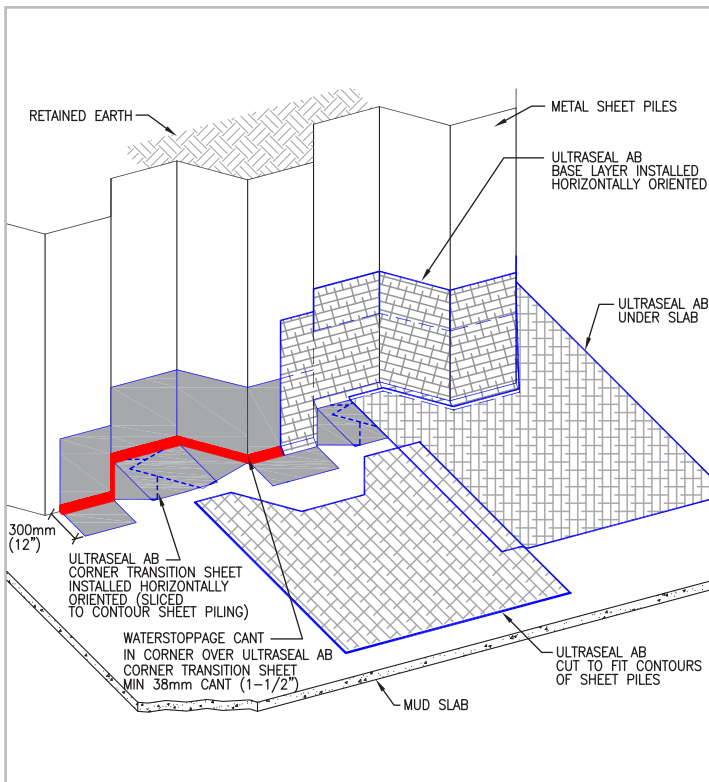


Figure 1.25 – Metal sheet piling to slab transition detail

The use of construction techniques described in this section allow the exterior building dimensions to coincide with the property line, thereby maximizing use of available land for building. ULTRASEAL AB has been proven to be one of the most effective means for waterproofing property line construction. Cast-in-place property line construction methods include soldier pile & lagging, metal sheet piling, earth formed shotcrete retention walls, and auger cast caisson walls.

For all property line construction methods, ULTRASEAL AB is installed to the shoring wall prior to concrete placement. Install ULTRASEAL AB with the adhesive side inward, facing the installer. Refer to each applicable construction method in Section 2 for specific substrate preparation and detailing installation guidelines.

AQUADRAIN sheet and 100BD base drain composite system should be connected to an operative water discharge system (sump pump or gravity to daylight discharge).

Protect waterproofing products from hydrating before material is contained with concrete or backfill. After any precipitation, standing water should be pumped off waterproofing as soon as possible.

Shoring Wall: Excavation work should provide shoring wall in good condition to receive waterproofing system. Wood lagging shoring should extend to the lowest level of the waterproofing installation with any voids or cavities exterior of the lagging filled with compacted soil or cementitious grout per project design. Voids or cavities at tie-backs should be filled with grout or compacted soil prior to ULTRASEAL AB installation. Interior surface of lagging timbers should be monolithic and tight together with gaps less than 25 mm (1"). Gaps in excess of 25 mm (1") should be completely filled with cementitious grout per project design or other solid material.

Cut rock excavations and concrete auger cast caisson retaining walls must be sufficiently planar. Typically a shotcrete or grout layer is required to provide acceptable surface to install ULTRASEAL AB.

Employ construction methods to stop water flowing through shoring wall prior to waterproofing installation. If only water seepage, install polyethylene sheeting over the seepage area prior to installing ULTRASEAL AB. Polyethylene sheeting should extend from seepage elevation to base of wall to protect entire waterproofing installation at that area.

ULTRASEAL® AB APC WATERPROOFING MEMBRANE WITH ADVANCED BOND COATING

2.1 PROPERTY LINE WALL INSTALLATION GUIDELINES

After the slab-to-wall corner transition sheet and bottom wall sheet course have been installed per Section 1.7 Page 10, ULTRASEAL AB sheets can be installed either vertically or horizontally oriented. Fasten the ULTRASEAL AB into position with washer-head fasteners maximum 600 mm (24") on center around the sheet edge. Install succeeding sheet overlapping the previous sheet edge 100 mm (4"). (Note: Shingle lap seams so that the bottom edge of the upper sheet is over the lower sheets top edge).

Continue installation up wall until grade elevation detail, or as specified, staggering all sheet ends of adjacent rolls a minimum 300 mm (12"). **Do not allow sheet overlap joints to occur at same elevation as concrete cold joints. Plan by chalk lining the location of construction joints.**

Penetrations: Install a cut collar of ULTRASEAL AB tightly around the penetration; extending a minimum 200 mm (8") radius. Apply BENTOSEAL over ULTRASEAL AB collar around penetration; extending BENTOSEAL a minimum 75 mm (3") radius at 6 mm (1/4") thickness. Then install main course of ULTRASEAL AB membrane tightly around the penetration. Next, detail around penetration with 20 mm (3/4") thick cant of BENTOSEAL. Last, install WATERSTOP-RX around the pipe maintaining Min. 75 mm (3") concrete coverage. With sleeved pipes, Division 3 work should include filling the gap between the pipe and the sleeve with D.O.T. non-shrink grout.

Tie-Back Covers: Select appropriate size TB-Boot to fit over tie-back plate and allow proper cast-in-place concrete coverage per project requirements. TB-Boot should fit over entire tie-back head without the tie-back plate or cables in direct contact with the TB-Boot. Prior to TB-Boot installation, fill voids in retention wall substrate and tie-back head assembly with spray foam (min 20 psi) or D.O.T. non-shrink grout. For non-hydrostatic conditions, install and secure AQUADRAIN drainage composite course per manufacturer's guidelines to soil retention wall prior to installing TB-Boot. For hydrostatic conditions, install TB-Boot prior to ULTRASEAL AB membrane. With soldier piles, strip piles with primary active waterproofing membrane being used prior to TB-Boot placement.

Secure TB-Boot to soil retention system using washer head fasteners along the outside edge of the base. Apply 6 mm (1/4") thick by 3" (75 mm) wide continuous ring of BENTOSEAL onto the flat base just outside of the 12 mm (1/2") raised collar. Install 1.2 m by 1.2 m (4' x 4') piece of ULTRASEAL AB (with precut hole in center to fit tight around the 12 mm (1/2") raised collar) over the entire flat base with outside edges fastened to the retaining wall. Secure inside ULTRASEAL AB edge around raised collar with washer-head fasteners that pass through the BENTOSEAL ring; typical fastener spacing 150 mm (6"). Do not install fasteners or puncture TB-Boot inside of the 12 mm (1/2") raised collar. Apply counter flashing of BENTOSEAL along ULTRASEAL AB sheet edge around raised collar. Then install ULTRASEAL AB field sheet overlapping outer membrane edge minimum 100 mm (4").

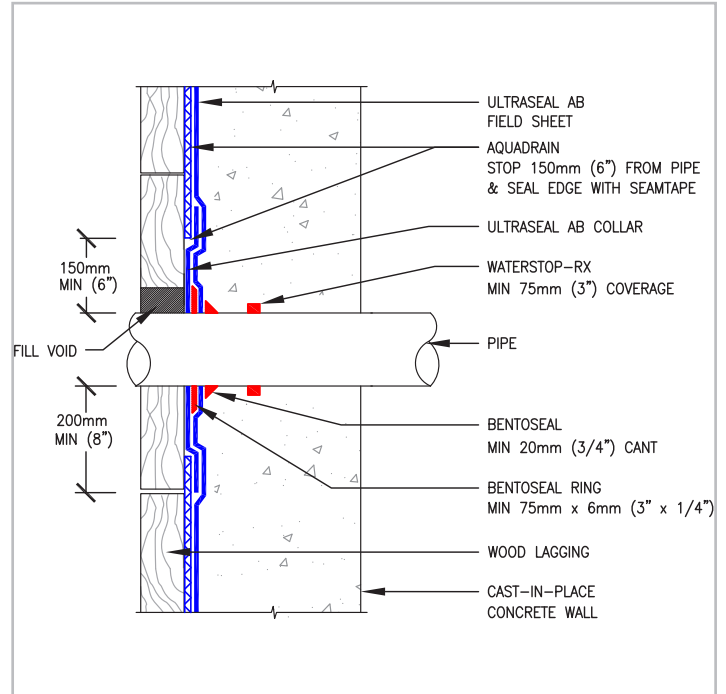


Figure 2.1 - WALL PENETRATION - Cut and secure ULTRASEAL AB tightly around penetrations and then apply BENTOSEAL 20 mm (3/4") ring around penetration and extend over membrane a minimum 75 mm (3") radius at minimum 6 mm (1/4") thickness

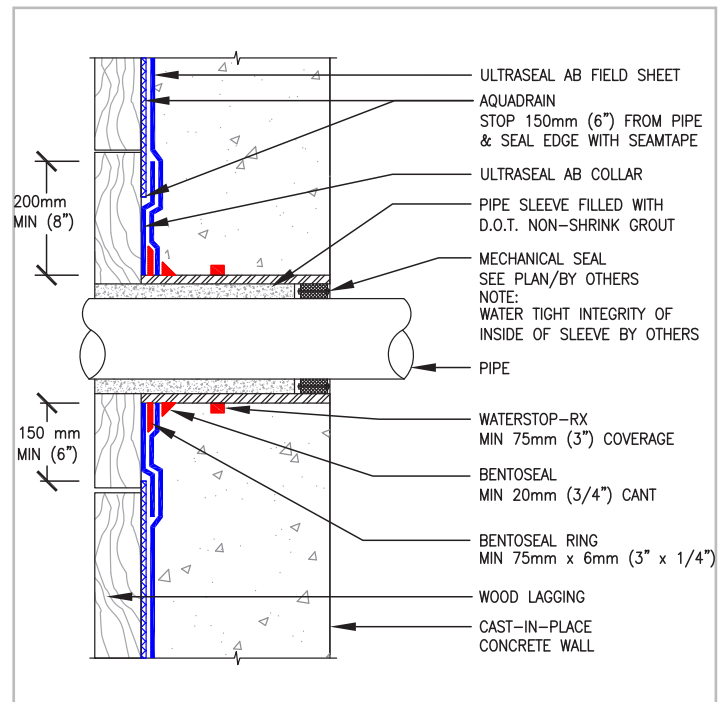


Figure 2.2 - SLEEVED WALL PENETRATION - Cut and secure ULTRASEAL AB tightly around penetrations and then apply BENTOSEAL 20 mm (3/4") ring around penetration and extend over membrane a min. 75 mm (3")

NON-HYDROSTATIC CONDITIONS

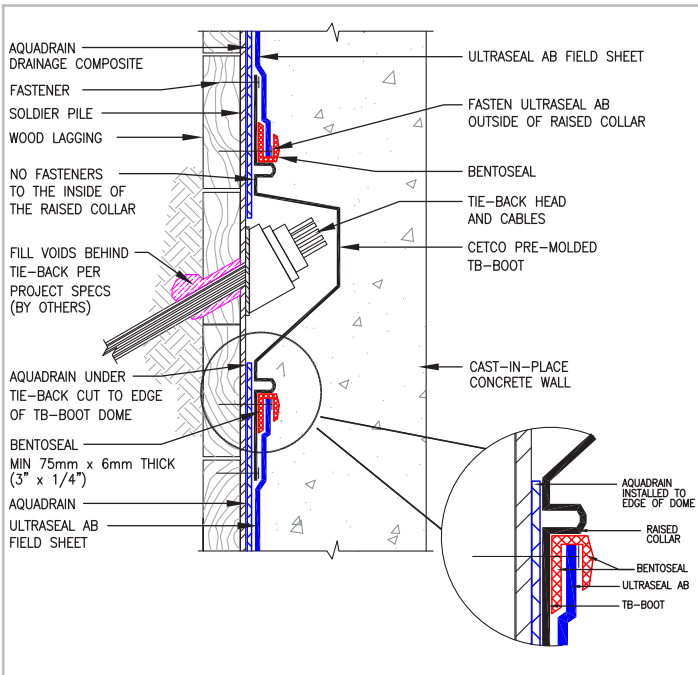


Figure 2.3: TIE-BACK DETAIL – Install TB-Boot centered over tie-back then install main course of ULTRASEAL AB with BENTOSEAL detailing. Do not fasten boot inside of raised collar around center formed area

Soldier Pile Stripping: Install a strip of the primary active waterproofing membrane over all soldier piles with raised lagging hanger bolts, form tie rods, or other irregular surface. The strip should extend a minimum 150 mm (6") to both sides of the piling. Apply BENTOSEAL 6 mm x 50 mm (1/4" x 2") to strip surface along both edges of each soldier pile (Figure 2.9).

Cementitious Board: Prior to installing ULTRASEAL AB to finished grade, install 12 mm (1/2") thick cementitious wall board centered over steel soldier pile from finished grade elevation to specified depth that the top of steel soldier pile and wood lagging will be removed (Figure 2.13).

Grade Termination: Terminate ULTRASEAL AB membrane 300 mm (12") below finished grade elevation with washer-head fasteners maximum 300 mm (12") on center and a tooled bead of CETSEAL or M-2000. Install ENVIRO SHEET flashing to primed concrete substrate with bottom edge overlapping top edge of ULTRASEAL AB membrane minimum 150 mm (6"). Overlap all roll ends a minimum 100 mm (4") to form a continuous flashing. Height of flashing shall be per project details and specifications. Install a rigid termination bar along top edge of ENVIRO SHEET; fastened maximum 300 mm (12") on center. Complete grade termination detail with tooled bead of CETSEAL or M-2000 along the top edge, at all penetrations through the flashing, and all exposed overlap seams.

HYDROSTATIC CONDITIONS

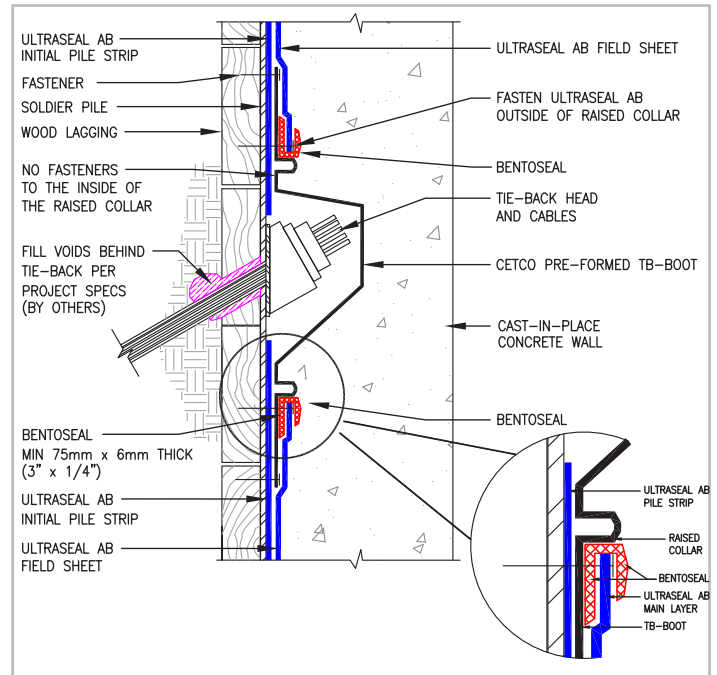


Figure 2.3a: TIE-BACK DETAIL – Install TB-Boot centered over tie-back then install ULTRASEAL AB with BENTOSEAL detailing. Do not fasten boot inside of raised collar around center formed area

Where lagging timbers and the top end of steel soldier piles are removed, repair any waterproofing damaged by the excavation and removal of the retention wall system. Secure all excavated ULTRASEAL AB overlap seams with washer-head fasteners maximum 600 mm (24") on center and then apply SEAMTAPE centered along overlap seams. Backfill shall be placed and compacted to minimum 85% Modified Proctor density promptly after waterproofing installation. Backfill should consist of compactable soil or angular aggregate (20 mm (3/4") or less) free of debris, sharp objects, and stones larger than 20 mm (3/4"). See termination details, Figure 3.11 and 3.12, page 22.

Verify the following substrate preparation work has been completed. Then install ULTRASEAL AB following the property line installation guidelines in Section 2.1 on page 12 and 13.

ULTRASEAL® AB APC WATERPROOFING MEMBRANE WITH ADVANCED BOND COATING

2.2 SOLDIER PILE & LAGGING RETAINING WALL

Verify the following substrate preparation work has been completed. Then install ULTRASEAL AB following the property line installation guidelines in Section 2.1 on page 12 and 13.

Preparation: Gaps between the wood lagging must be no wider than 25 mm (1"). If the gaps between lagging are in excess of 25 mm (1"), the gaps should be completely filled with cementitious grout per project design, wood, extruded polystyrene (25 psi min.) or compacted soil (Figure 2.7). If water is flowing through the lagging, polyethylene sheeting can be installed over the area before ULTRASEAL AB is installed.

In areas with large gaps (up to 63 mm (2-1/2")) between lagging, AQUADRAIN sheet drainage composite can be installed over the lagging to provide a uniform surface to mount ULTRASEAL AB (Figure 2.8). Securely fasten AQUADRAIN to the lagging surface with washerhead nails before installing ULTRASEAL AB. Gaps larger than 63 mm (2-1/2") between lagging should be completely filled with grout, wood, extruded polystyrene (25 psi min.), spray foam (20 psi min.), or compacted soil even if AQUADRAIN is installed prior to ULTRASEAL AB. Do not use plywood or other surface treatment over large lagging gaps that leaves the cavity void. Details 2.10 through 2.12 on page 15 illustrate the installation of ULTRASEAL AB over the different wood lagging positions relative to the soldier piling.

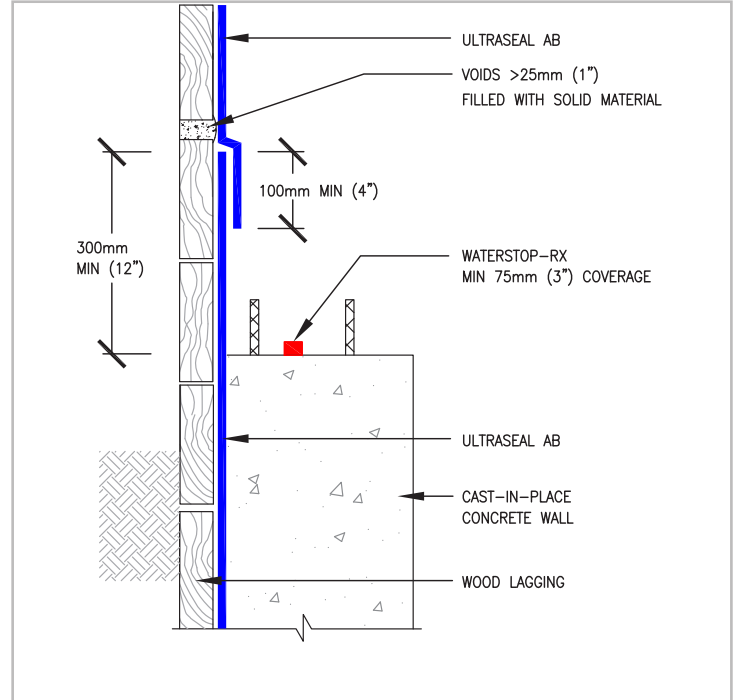


Figure 2.7 - ULTRASEAL AB installed directly to wood lagging with gaps filled. (Cast-in-place concrete wall)

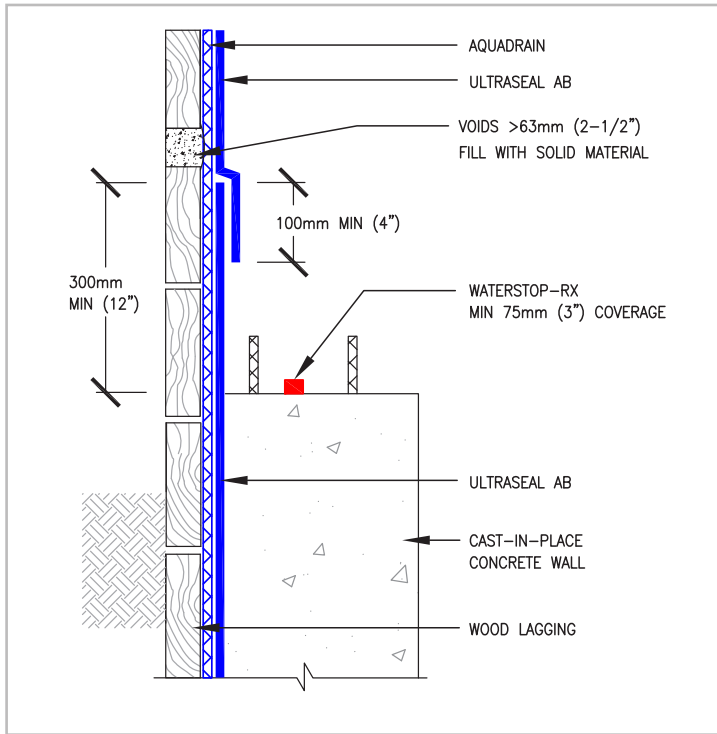


Figure 2.8 - ULTRASEAL AB installed directly to wood lagging with gaps filled. (Cast-in-place concrete wall)

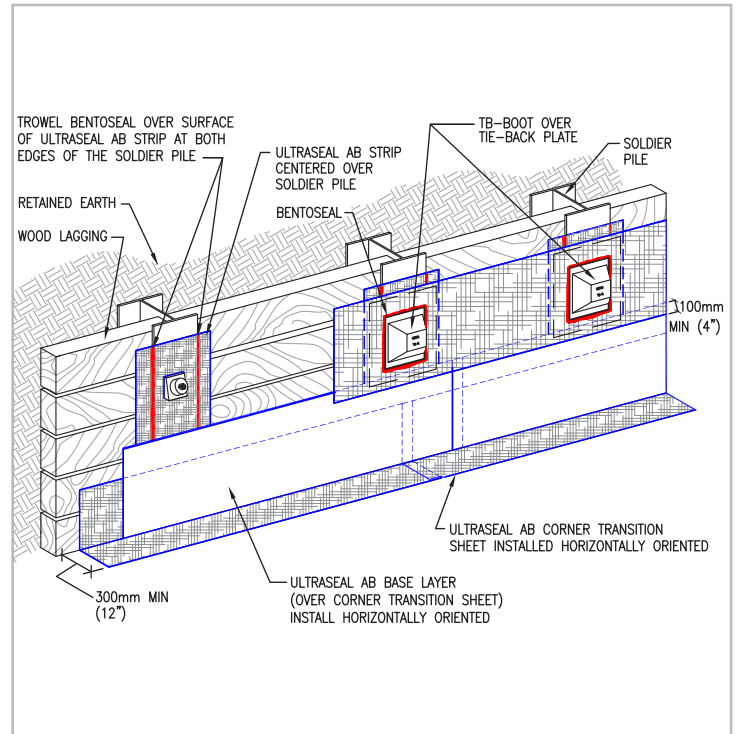


Figure 2.9 - Install ULTRASEAL AB onto soldier pile and wood lagging retaining wall prior to cast-in-place concrete wall

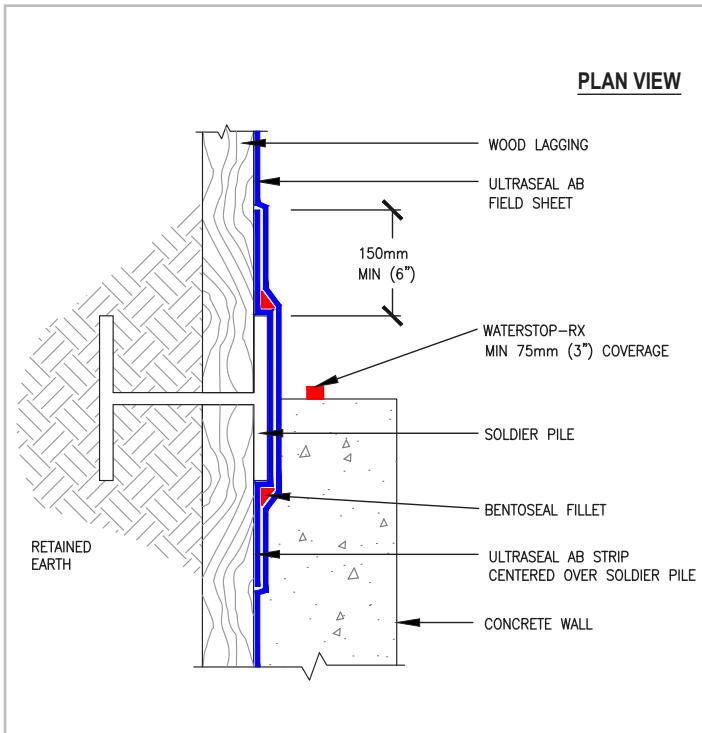


Figure 2.10 - Lagging secured to outside surface of front pile flange providing smooth surface (Plan View)

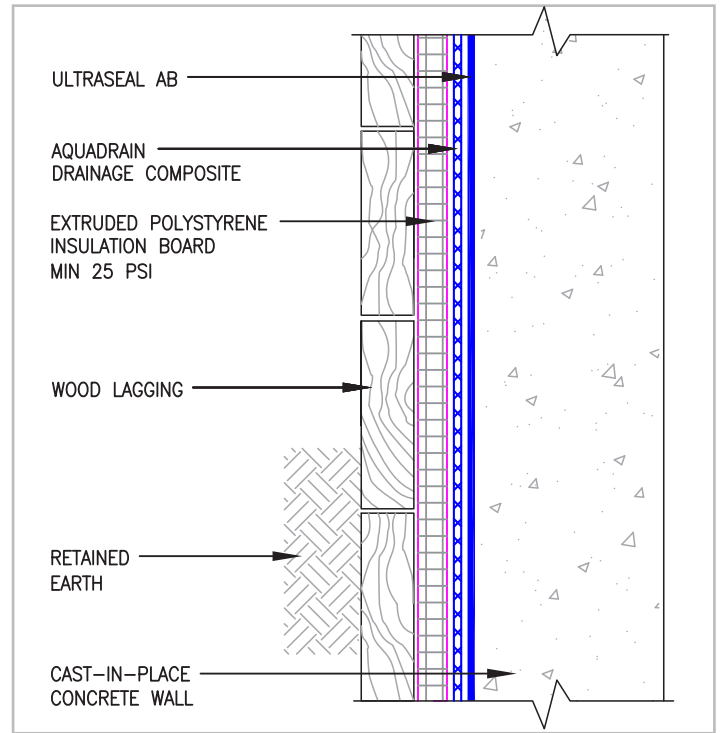


Figure 2.12 - XPS Insulation Board (Min 25 PSI) secured to lagging with drainboard and UltraSeal AB installed over top

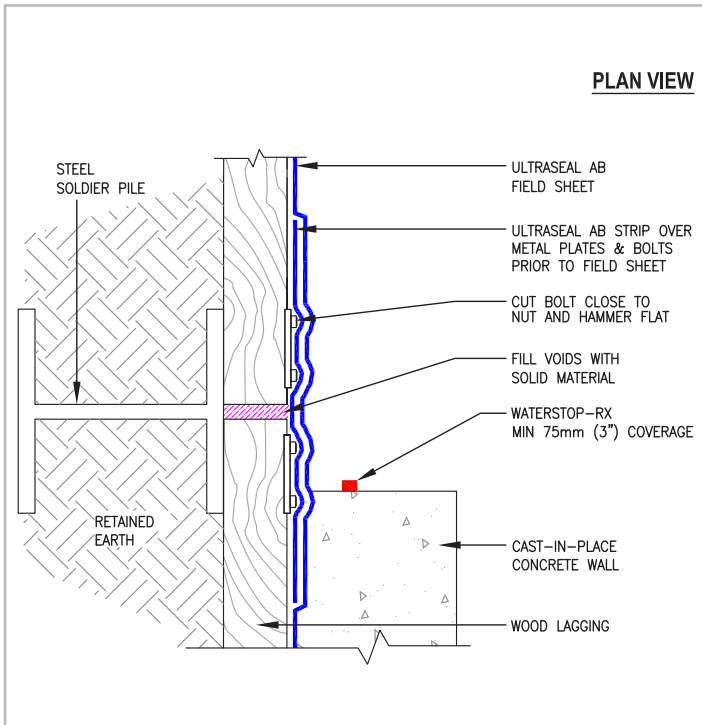


Figure 2.11 - Lagging secured to inside surface of front pile flange. Install ULTRASEAL AB strip to cover mounting plates and bolts prior to main course (Plan View)

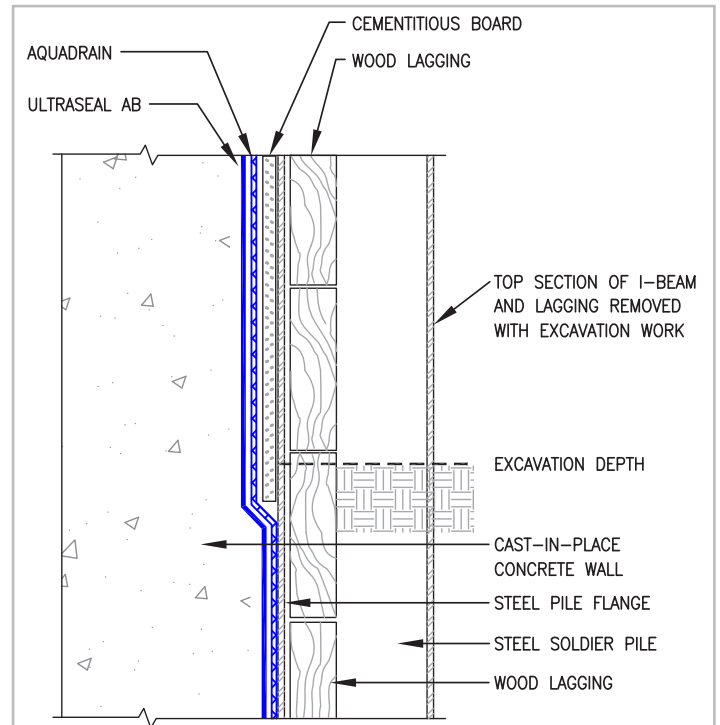


Figure 2.13 - WALL EXCAVATION AT GRADE - Cementitious board protects waterproofing during excavation and removal of steel pile top and wood lagging

ULTRASEAL® AB APC WATERPROOFING MEMBRANE WITH ADVANCED BOND COATING

2.3 METAL SHEET PILING RETAINING WALL

Verify the following substrate preparation work has been completed. Then install ULTRASEAL AB following the property line installation guidelines in Section 2.1 on page 12 and 13. Special knurled powder-actuated fasteners are recommended to secure ULTRASEAL AB to the metal sheet piling.

Preparation: Fill voids or cavities at tie-back plates with D.O.T. non-shrink grout or compacted soils. If excessive water is penetrating the sheet piling knuckles, BENTOGROUT can be injected to the outside of the knuckle to stop water flow. Consult CETCO for BENTOGROUT applications and installation guidelines.

Alternate Plywood Method

Alternatively, 12 mm (1/2") plywood may be fastened to the sheet piling to create a flat surface upon which ULTRASEAL AB is fastened. All void spaces between the plywood and sheet piling must be filled with compacted earth or concrete. Apply ULTRASEAL AB to plywood following "Property Line Construction" Guidelines in Section 2, Page 11.

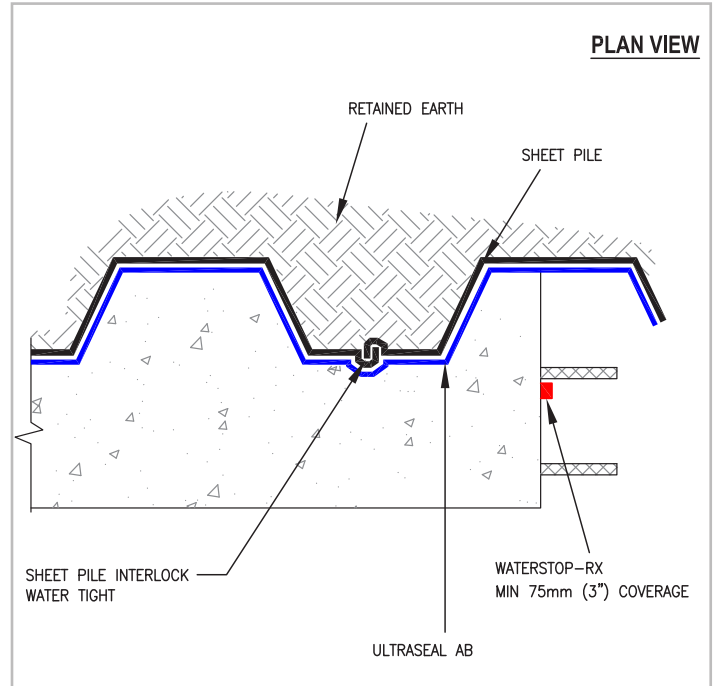
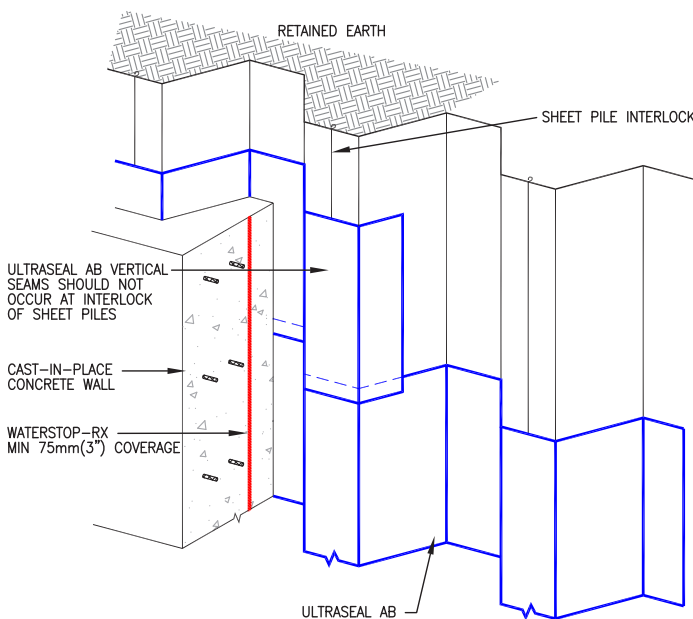


Figure 2.14 – Sheet pile interlock detail

INSTALLED AGAINST SHEET PILE:



ALTERNATE PLYWOOD METHOD:

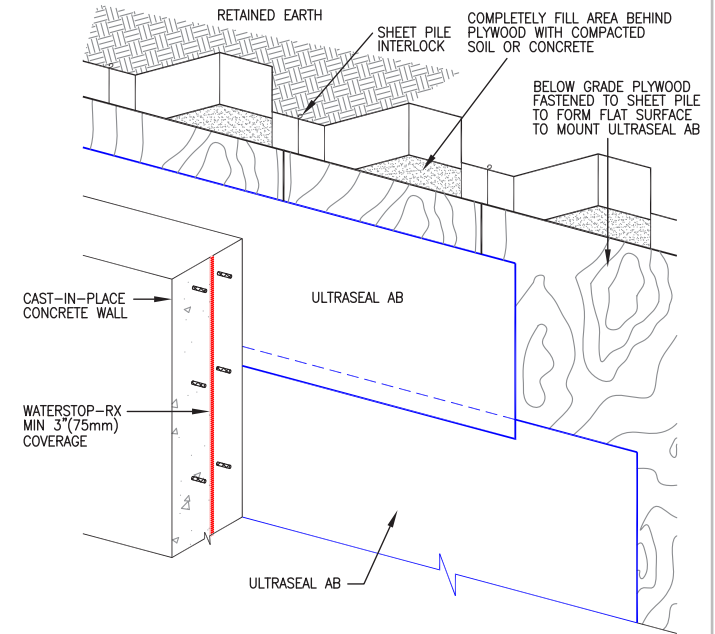


Figure 2.15 – Install ULTRASEAL AB onto metal sheet piling retaining wall with powder-actuated fasteners and alternate plywood method with area behind plywood filled with compacted soil or concrete

2.4 EARTH FORMED SHOTCRETE RETAINING WALL

Verify the following substrate preparation work has been completed. Then install ULTRASEAL AB following the property line installation guidelines in Section 2.1 on page 12 and 13.

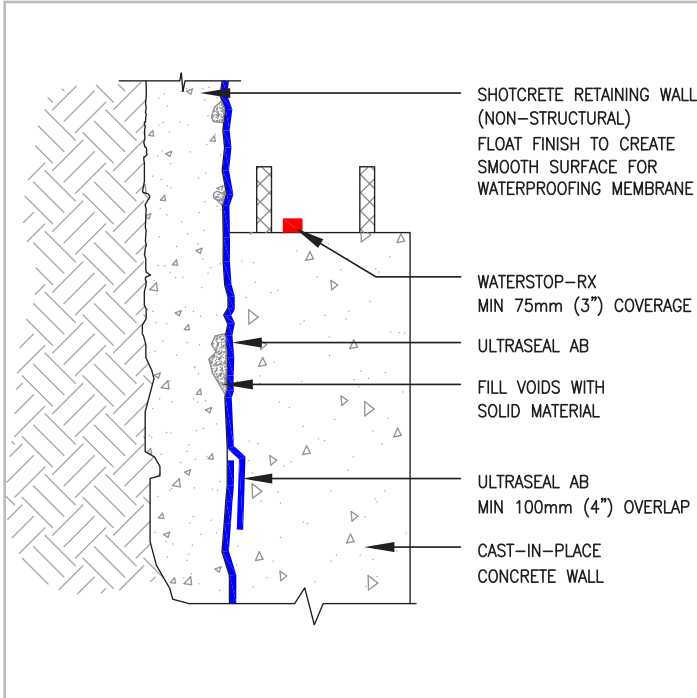


Figure 2.16 – Grout void area and remove protrusions to provide smooth surface for ULTRASEAL AB

Preparation: The surface of the earth formed diaphragm wall must be sufficiently planar to provide an adequately smooth surface to apply ULTRASEAL AB. ULTRASEAL AB can be applied over large, relatively shallow indentations. The surface should not contain voids or sharp protrusions in excess of 25 mm (1"). Fill all voids with cementitious grout per project design and remove protrusions prior to installation (Figure 2.18).

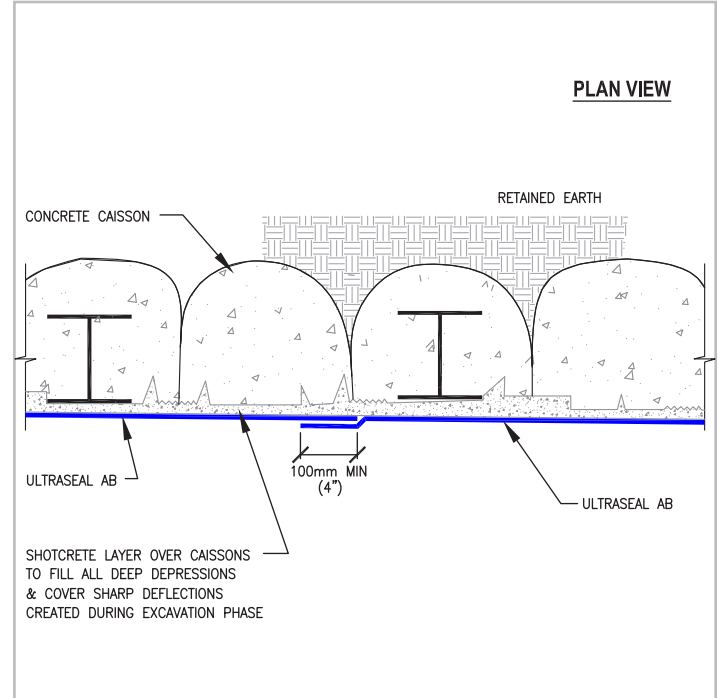


Figure 2.17 – Earth formed concrete retention wall with concrete caisson supports. (Plan View)

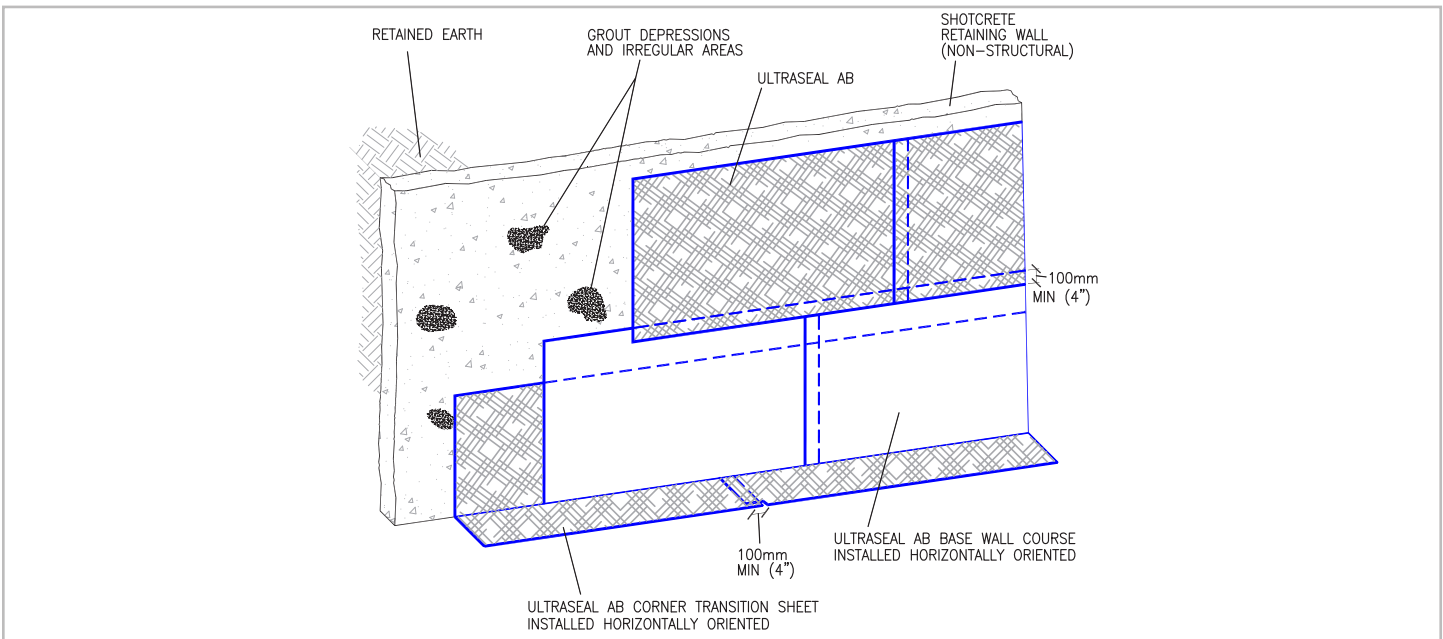


Figure 2.18 – ULTRASEAL AB installation over an earth formed shotcrete retaining wall prior to cast-in-place concrete wall

ULTRASEAL® AB
APC WATERPROOFING MEMBRANE WITH ADVANCED BOND COATING

2.5 AUGER CAST CAISSON WALLS

Verify the following substrate preparation work has been completed. Then install ULTRASEAL AB following the property line installation guidelines in Section 2.1 on page 12 and 13.

Preparation: The surface of auger cast caisson and cut rock excavation walls must be sufficiently planar to provide an adequately smooth surface to apply ULTRASEAL AB. ULTRASEAL AB can be applied over large, relatively shallow indentations where it can conform tight against the surface. The surface should not contain voids or sharp protrusions in excess of 25 mm (1"). Fill all large recesses between caissons with cementitious grout per projet design or shotcrete prior to installing ULTRASEAL AB (Figure 2.21). **Cut rock excavations typically require shotcrete or grout work to provide acceptable surface to install ULTRASEAL AB (Figure 2.19).**

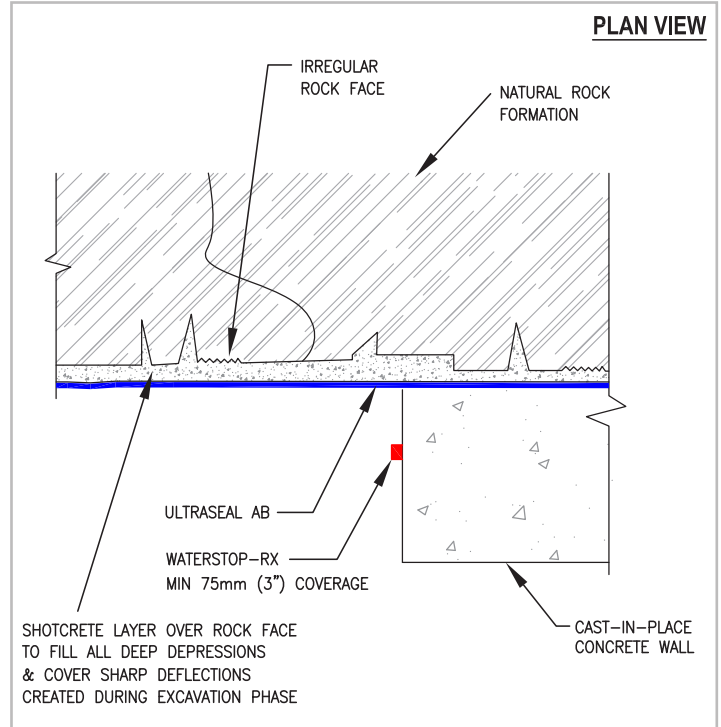


Figure 2.19 – Cut Rock excavation with shotcrete applied to provide a smooth surface for waterproofing installation

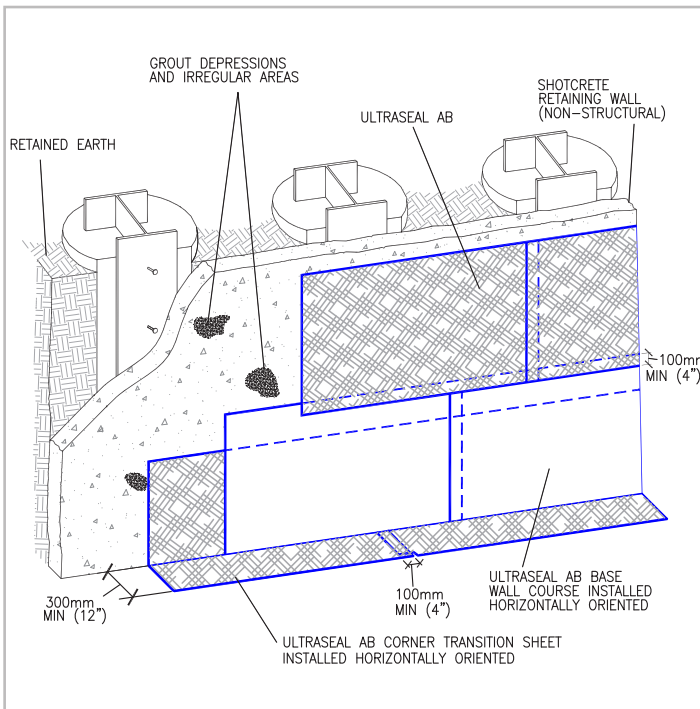


Figure 2.20 – ULTRASEAL AB installation over an auger cast concrete retention wall prior to cast-in-place concrete wall

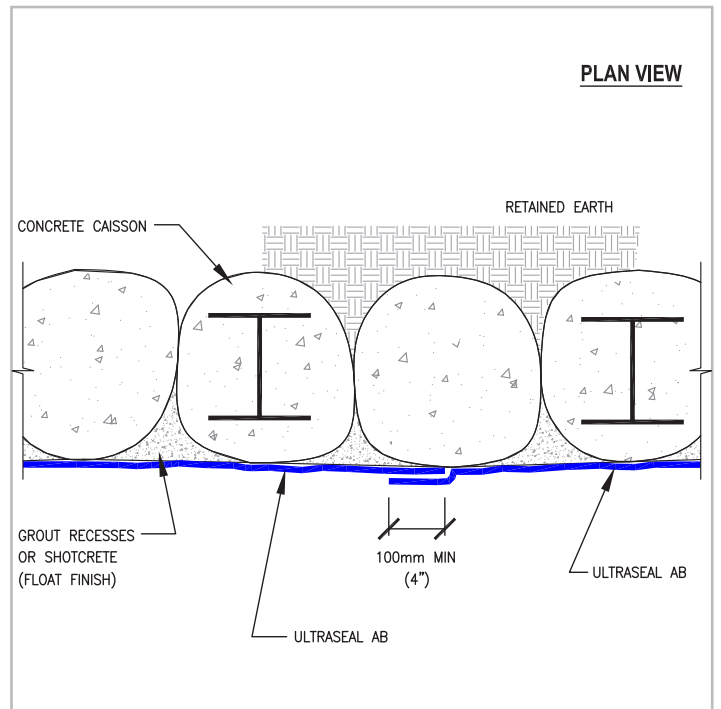


Figure 2.21 – Fill in recesses between cast caissons with grout to provide smooth surface (Plan View)

SECTION 3 BACKFILLED WALLS

Install ULTRASEAL AB with the adhesive side against the concrete wall (white geomembrane side facing installer) on cast-in-place concrete foundation walls prior to backfilling. ULTRASEAL AB may be applied as soon as the forms are removed. It is not necessary to wait for the concrete to completely cure. Use ULTRASEAL AB with concrete cast with conventional forms that produce a smooth surface.

3.1 SURFACE PREPARATION

Footing should be swept clean of silt, rocks and debris to provide ULTRASEAL AB with direct contact to the concrete in the application area. The wall surface must be properly prepared before ULTRASEAL AB is installed. Areas of surface honeycombing or voids should be filled with D.O.T non-shrink grout or BENTOSEAL. Protrusions of over 6 mm (1/4") should be knocked off smooth with the concrete surface. Concrete work should include completely filling taper-tie holes with D.O.T non-shrink grout and a piece of WATERSTOP-RX centered in the wall. Apply BENTOSEAL over exterior grouted surface of all form tie holes (Figure 3.1).

3.2 INSTALLATION

Before installing the first course of ULTRASEAL AB, place Hydrobar Tubes at the wall/footing inside corner (Figure 3.2). "Butt" the ends of Hydrobar Tubes together to form a continuous line.

Beginning at the bottom of the wall, install ULTRASEAL AB horizontally oriented with the bottom edge over the Hydrobar Tubes and extending out a minimum 150 mm (6"). At corners cut the bottom edge of ULTRASEAL AB so that it can be extended onto the footing. Secure ULTRASEAL AB into position with washer-head fasteners a maximum 600 mm (24") on center. Then cut and install a section over the uncovered footing corner area. Apply BENTOSEAL at the corner section to the overlaps. (Figure 3.2).

Install adjacent ULTRASEAL AB rolls of the bottom course horizontally oriented. Each roll should overlap the preceding roll a minimum 50 mm (2") and should extend onto the footing a minimum 150 mm (6"). At vertical inside corners apply a continuous 20 mm (3/4") fillet of BENTOSEAL directly in the corner prior to installing membrane (Figure 3.3). Stagger all vertical overlap joints minimum 300 mm (12") (Figure 3.4). When hydrostatic conditions exist, the vertical wall ULTRASEAL AB should cover the entire footing and overlap the underslab waterproofing a minimum 6" (150 mm) (Figure 3.6). Succeeding membrane courses can be installed either vertically or horizontally oriented. Tape all membrane overlap seams with CETCO SEAMTAPE.

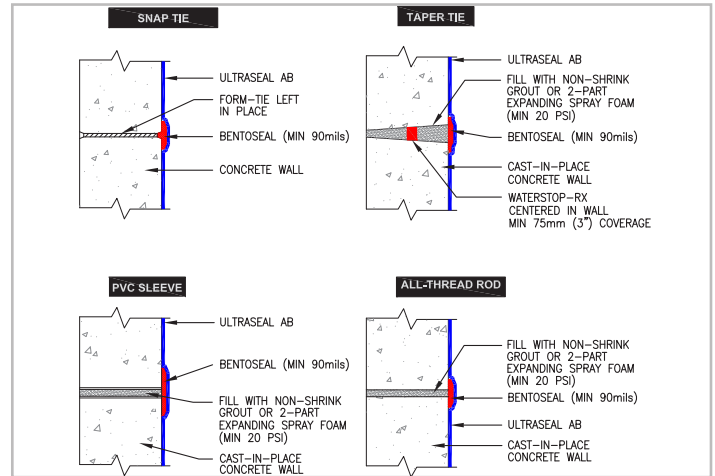


Figure 3.1 - Concrete form tie details

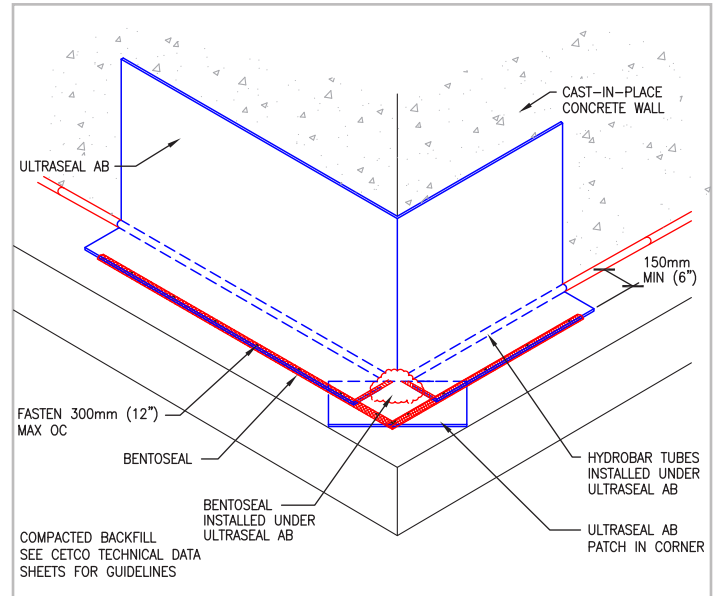


Figure 3.2 - Start ULTRASEAL AB at the corner horizontally. Place cut section at corner and apply BENTOSEAL at overlaps

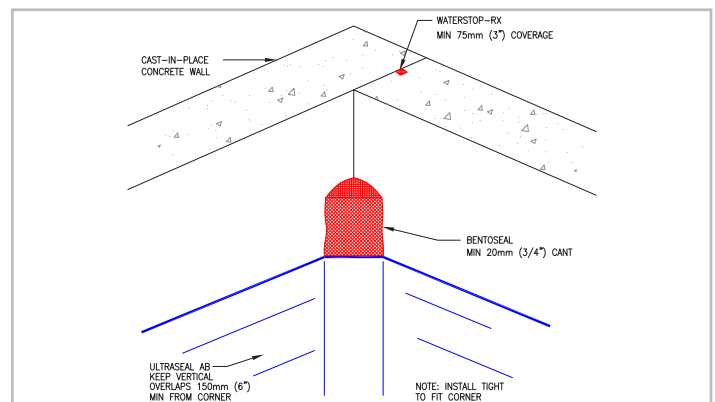


Figure 3.3 - Apply fillet of BENTOSEAL to inside corner

ULTRASEAL® AB

APC WATERPROOFING MEMBRANE WITH ADVANCED BOND COATING

Backfill: The excavated area should be backfilled and compacted promptly after ULTRASEAL AB is installed. Use placed backfill as a platform in applying succeeding ULTRASEAL AB courses. The backfill must be compacted to a minimum of 85% Modified Proctor density. Backfill should consist of compactable soil or angular aggregate 20 mm (¾") or less and free of debris and sharp objects. When backfill cannot be placed immediately, protect membrane from precipitation and debris by sealing edges to concrete substrate with CETCO SEAMTAPE or tooled bead of CETSEAL. This temporary termination can be left in place covered by subsequent membrane overlap.

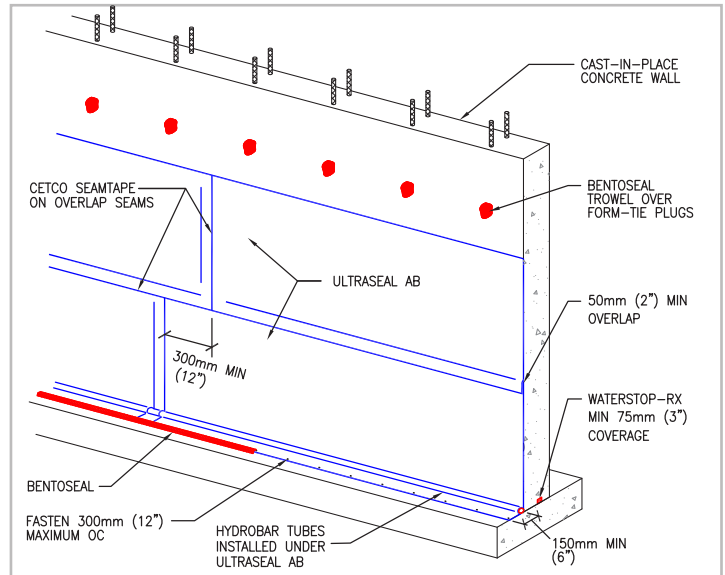


Figure 3.4 – Single penetration cast-in-place wall detail

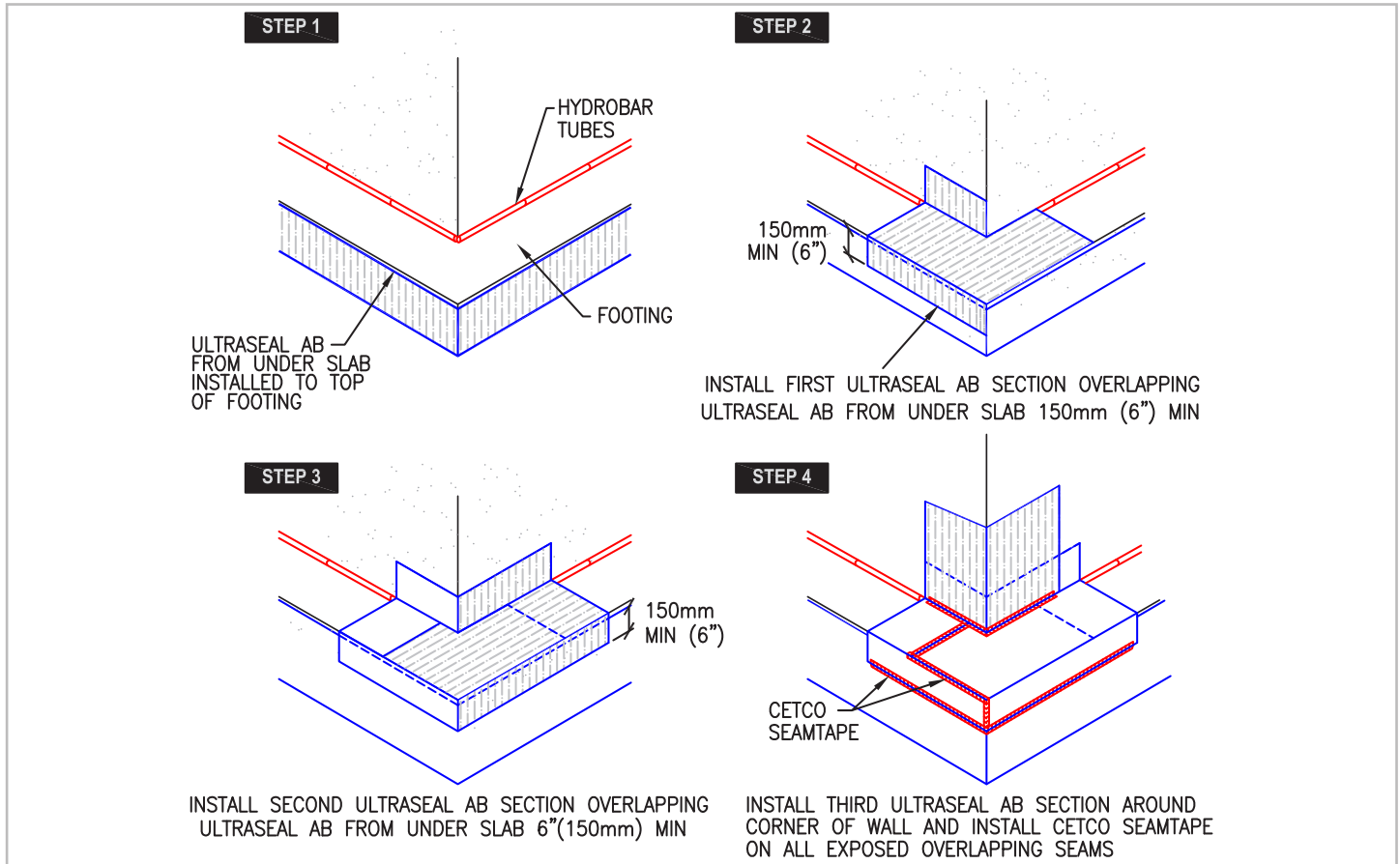


Figure 3.5 – Step by step detail of outside wall base corner installation (hydrostatic condition)

3.3 BACKFILLED WALL PENETRATIONS

Cut ULTRASEAL AB to closely fit around penetrations. Install membrane with adhesive side against concrete. Trowel a minimum 20 mm (3/4") thick fillet of BENTOSEAL around the penetration and the membrane. Extend BENTOSEAL onto the penetration 38 mm (1-1/2") and cover membrane edge (Figure 3.7).

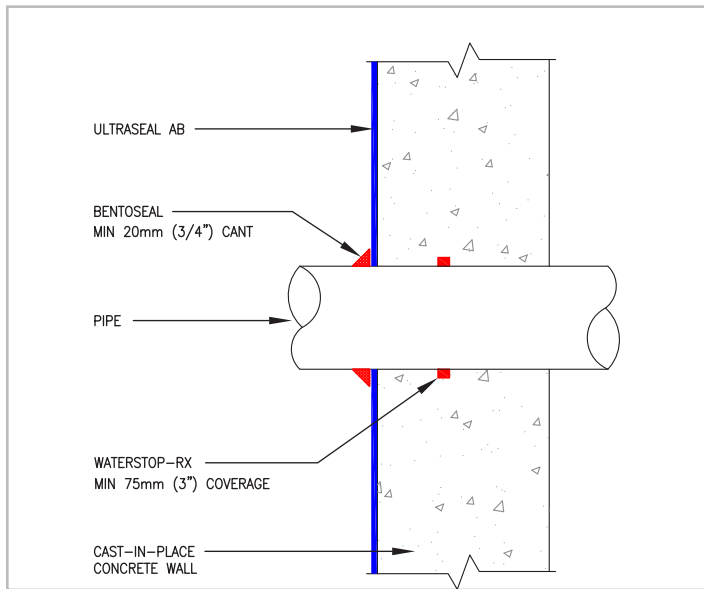


Figure 3.6 - Single penetration cast-in-place wall detail

In areas where multiple penetrations are close together, it may be impractical to cut ULTRASEAL AB to fit around base of each penetration. Therefore, apply a 20 mm (3/4") thick fillet of BENTOSEAL around each penetration and cover the entire surface between the penetrations (Figure 3.8). Extend BENTOSEAL 38 mm (1-1/2") onto the penetrations.

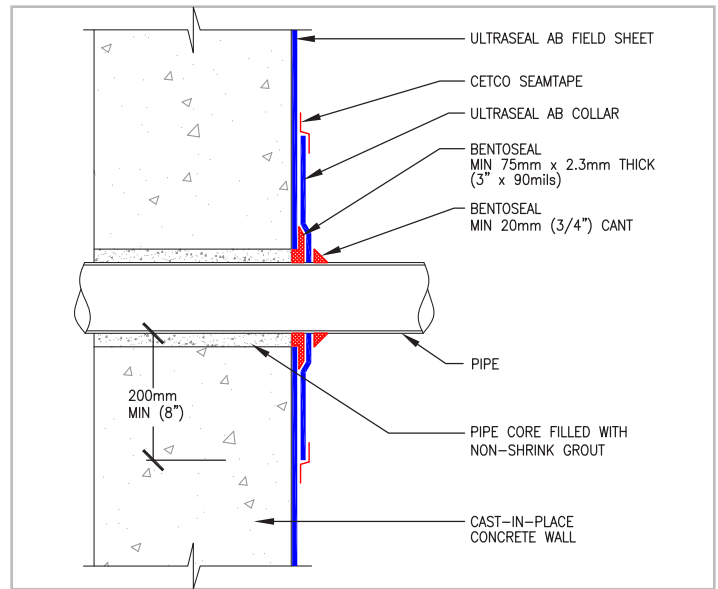


Figure 3.8 - Cored wall penetration cast-in-place wall detail

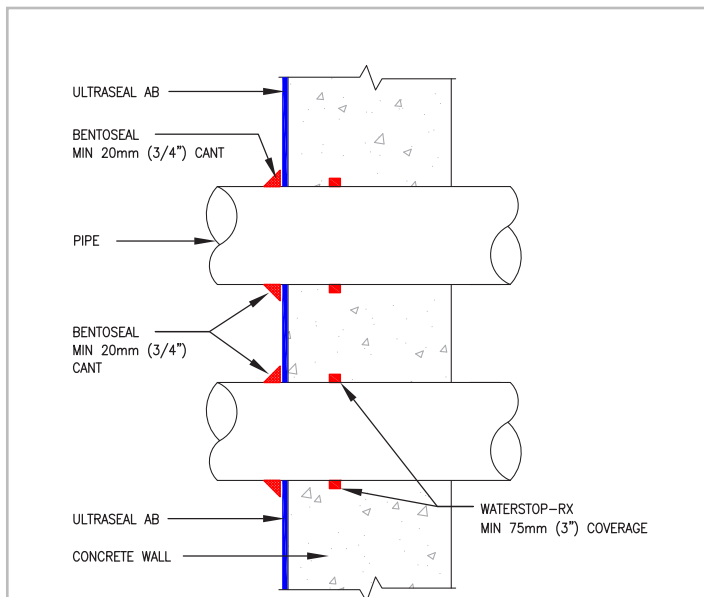


Figure 3.7 - Install ULTRASEAL AB between penetrations with accessibility. Trowel BENTOSEAL around penetrations

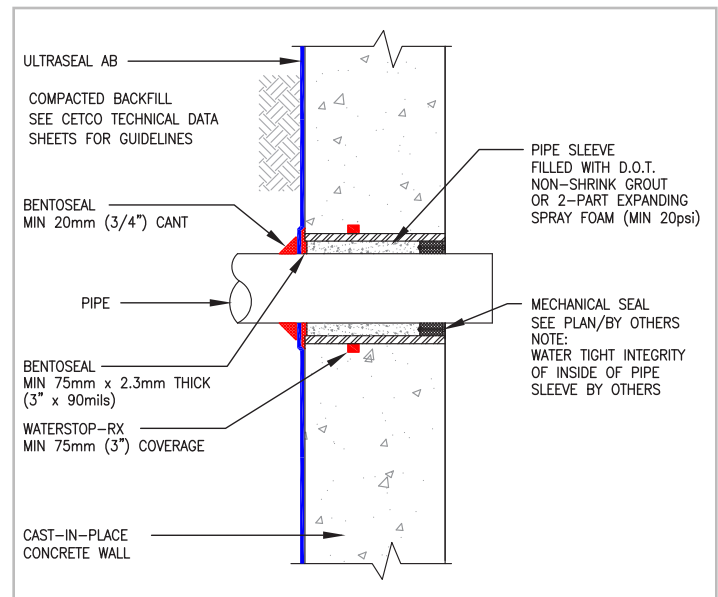


Figure 3.9 - Sleeved pipe penetration cast-in-place wall detail

ULTRASEAL® AB APC WATERPROOFING MEMBRANE WITH ADVANCED BOND COATING

3.4 GRADE TERMINATIONS

Terminate ULTRASEAL AB membrane 300 mm (12") below finished grade elevation with washer-head fasteners maximum 300 mm (12") on center and a tooled bead of CETSEAL or M-2000. Install ENVIROSHEET flashing to primed concrete substrate with bottom edge overlapping top edge of ULTRASEAL AB membrane minimum 150 mm (6"). Overlap all roll ends a minimum 100 mm (4") to form a continuous flashing. Height of flashing shall be per project details and specifications. Install a rigid termination bar along top edge of ENVIROSHEET; fastened maximum 300 mm (12") on center. Complete grade termination detail with tooled bead of CETSEAL or M-2000 along

the top edge, at all penetrations through the flashing, and all exposed overlap seams. Grade terminations are illustrated in Figures 3.11 and 3.12.

3.5 MASONRY BLOCK WALLS

ULTRASEAL AB is not suitable for masonry block foundation walls.

SECTION 4 SPECIAL CONDITIONS

4.1 PRECAST CONCRETE CONSTRUCTION

Consult CETCO regarding products and special installation guidelines for precast concrete plank decks, precast earth covered roofs, and precast wall construction.

4.2 CONTAMINATED CONDITIONS

Use ULTRASEAL AB in conditions where the groundwater contains high concentrations of chemicals or saline. These conditions are typically encountered at industrial sites and coastal regions. If groundwater contains strong acids, alkalis, or has a conductivity of 2,500 µmhos/cm or greater (high salt concentration), water samples should be submitted to CETCO for compatibility testing.

For compatibility testing, provide 1.8 liters (64 Ounces) of site groundwater in a clean, unbreakable container. Ship water sample to: CETCO 2870 Forbs Avenue, Hoffman Estates, IL 60192, ATTN: BMG Field Services. Upon analysis, CETCO will provide a written report evaluating the water's compatibility with ULTRASEAL AB.

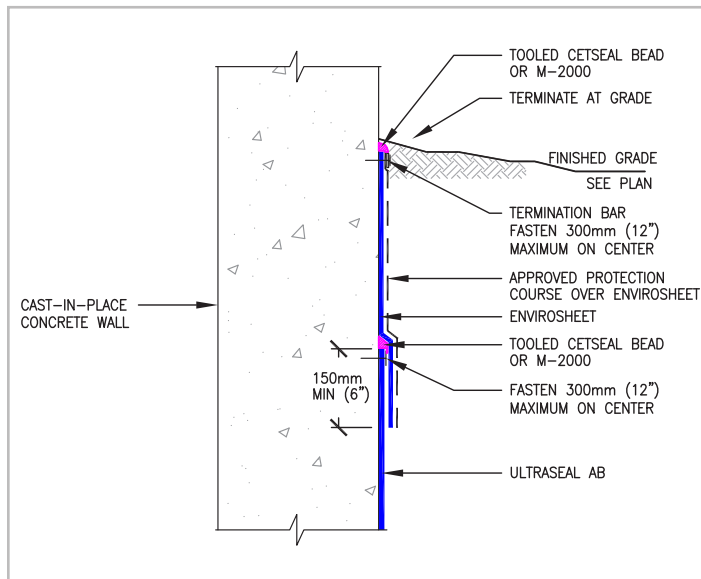


Figure 3.11 - Termination at finished grade

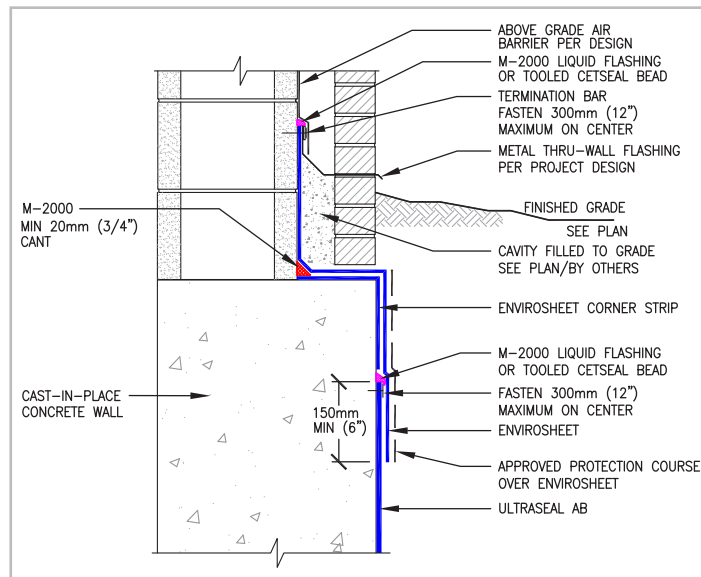


Figure 3.12 - Termination at grade with brick veneer

IMPORTANT NOTICE

FOR SHOTCRETE, PRECAST CONCRETE, EXPANSION JOINTS AND OTHER APPLICATIONS NOT COVERED IN THIS MANUAL, CONTACT CETCO FOR TECHNICAL ASSISTANCE AND INSTALLATION GUIDELINES.

IMPORTANT NOTICE

Contact CETCO for verification of specification and installation requirements to comply for eligibility of HydroShield Warranty.

LIMITED WARRANTY

The information and data contained herein is believed to be accurate and reliable. Specifications and other information contained herein supersede all previously printed material and are subject to change without notice.

Manufacturer's warranty of installed system is available. Contact seller for terms and sample documents including all limitations.

All goods sold by seller are warranted to be free from defects in material and workmanship.

The foregoing warranty is in lieu of and excludes all other warranties not expressly set forth herein, whether expressed or implied by operation of law or otherwise including but not limited to any implied warranties of merchantability or fitness.

Seller shall not be liable for incidental or consequential losses, damages or expenses, directly or indirectly arising from the sale, handling or use of the goods, or from any other cause relating thereto, and seller's liability hereunder in any case is expressly limited to the replacement (in the form

originally shipped) of goods not complying with this agreement or at seller's election, to the repayment of, or crediting buyer with, an amount equal to the purchase price of such goods, whether such claims are for breach of warranty or negligence.

Any claim by buyer with reference to the goods sold hereunder for any cause shall be deemed waived by buyer unless submitted to seller in writing within thirty (30) days from the date buyer discovered or should of discovered, any claimed breach.

Materials should be inspected and tested by purchaser prior to their use if product quality is subject to verification after shipment. Performance guarantees are normally supplied by the applicator.

Note: ULTRASEAL AB waterproofing system is not an expansion joint material.



CETCO[®]



cetco@mineralstech.com | cetco.com | 800.527.9948

UPDATED: JANUARY 2020

© 2020 CETCO. IMPORTANT: The information contained herein supersedes all previous printed versions, and is believed to be accurate and reliable. For the most up-to-date information, please visit www.cetco.com. CETCO accepts no responsibility for the results obtained through application of this product. CETCO reserves the right to update information without notice.

