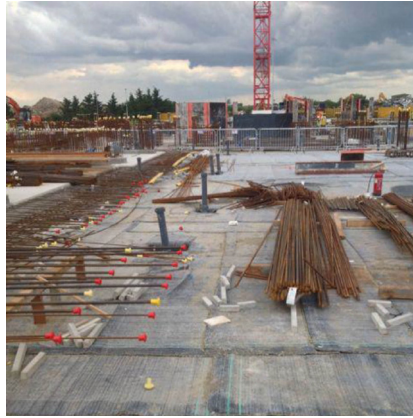


# Varying weather conditions calls for VOLTEX® waterproofing membrane

This £61 million project includes Film & TV Studios, R&D Facilities and offices on a 41,000 m<sup>2</sup> site, with a large single-storey basement cinema complex.



## PROJECT

BskyB, Osterley Campus Phase II

Design Engineer:  
PLP Architects/ARUP Engineers

General Contractor:  
MACE Group

## LOCATION

Isleworth, UK

## PRODUCTS

VOLTEX® waterproofing membrane

## CHALLENGE:

The BskyB campus is the world headquarters with the Phase II building being the latest update to a 13.5 Hectare site employing 12,000 people. The Phase II building will house a number of purpose built facilities including film and TV studios, R&D facilities and a basement cinema, so it was important to the client that a proven waterproofing solution was selected by an established manufacturer. With the downtime costs for water ingress being substantial, the client sought the quality and innovation which CETCO provides.

The construction programme required a waterproofing membrane which could be installed in any weather condition. The chosen membrane had to be robust in design to take steel reinforcement without the need for additional protection, yet easy to install allowing a tight construction programme to be achieved.

CETCO Approved Applicator A.J.Morrisroe recognised the opportunity to involve CETCO and the preferred waterproofing membrane, VOLTEX®, which benefitted the application with its mechanically fixed laps and overall speed of application. The peel-adhesion properties of VOLTEX® enables it to form a continuous mechanical bond to cast concrete, thereby preventing lateral water migration at the actual point of ingress if the membrane becomes breached.

It was also important to the client that the material and the manufacturer could demonstrate environmental awareness. With the naturally occurring sodium bentonite utilized within VOLTEX® containing zero VOCs together with CETCO's commitment to sustainable solutions, we were able to meet the client's expectations in this regard.

## BSKYB, OSTERLEY CAMPUS PHASE II

### **SOLUTION:**

The solution was to work with the design team, and supply a package of project specific details enabling the main contractor and CETCO Approved Applicator to construct a ground-bearing reinforced concrete slab within a very tight programme, and also continue working without delay in exceptionally severe weather conditions. This provided the slab with a Grade 3 Type A waterproofing system and the cinema basement with a combined Grade 3 Type A & Type C waterproofing system, both in accordance with BS 8102:2009.

### **EXECUTION:**

The VOLTEX® installation was completed over a 15 week period, during which there were several design changes which CETCO was able to accommodate. This was achieved due to the strong relationship between CETCO and its Approved Applicator, A.J. Morrisroe.

### **RESULT:**

35,000 m<sup>2</sup> of VOLTEX® membrane has been installed meeting the client's need for a successful installation backed by a global waterproofing solutions provider. CETCO has again demonstrated its innovation and reliability in delivering peace of mind.