



HEVI-SAND®

Hevi-Sand® is produced from high-grade foundry chromite which has been specially treated for use as a mold and core media in the production of quality castings.

Hevi-Sand® is selectively mined from our own sources, which are the richest and purest deposits in the world. This naturally occurring chrome ore undergoes several intensive cleaning and screening processes to enhance molding and casting properties - available in various grades in quality bags or bulk tanker.

Features and Benefits

- The density of Hevi-Sand®, compared to silica sand, provides the mold or core with a high rate of heat transfer giving excellent chilling characteristics—in some cases eliminating the need for metal chills.
- Chipping, grinding and overall cleaning costs can be significantly reduced.
- Minimal binder requirements and excellent permeability can reduce the incident of gas defects.
- High resistance to penetration—High thermal stability and heat transfer in comparison to silica sands make it the preferred aggregate for large iron, steel, copper base and high alloy castings
- Hevi-Sand® is successful in reducing or eliminating penetration, burn-on and veining on castings of this type.
- Hevi-Sand® is not easily wetted by liquid metal giving excellent refractory properties to mold and core surfaces improving resistance to attack from metal oxides and slag resulting in excellent peel characteristics and good surface finish.
- Hevi-Sand® undergoes very low volume change when subjected to thermal shock. This thermal stability helps prevent expansion defects, such as veins and scabs (rat-tails and buckles), and enhances overall dimensional accuracy.



Hevi-Sand®

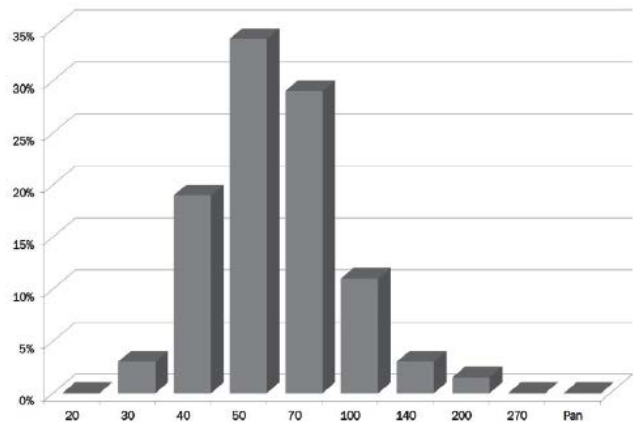
Technical Specification

Hevi-Sand® Technical Specification			
Chromium Oxide	Cr ₂ O ₃	≥ 46%	47.1%
Silica (free)	SiO ₂	≤ 1.0%	0.6%
Iron Oxide	FeO	N/A	26.5%
Aluminum Oxide	Al ₂ O ₃	N/A	13.5%
Magnesium Oxide	MgO	N/A	9.8%
Calcium Oxide	CaO	≤ 1%	0.1%
Loss on Ignition		≤ 1%	- 0.5%
Moisture		≤ 0.2%	0.06%
Acid Demand	pH 3 (ml)	≤ 10	5
	pH 4 (ml)	≤ 8	3.5
	pH 5 (ml)	≤ 6	2.5

Sieve Distribution

Hevi-Sand® Sieve Distribution (ASTM Sieves) Typical		
ASTM Sieve No.	Sieve Size (microns)	%Retained
20	850	0%
30	600	3.7%
40	425	19%
50	300	34%
70	212	29%
100	150	11%
140	106	3%
200	75	0.3%
70	53	0%
Pan	0	0%

Test Qty = 100 AFS No = 45.7



- Our standard material has an AFS of 42-50 with a 3-4 sieve distribution. However, we are able to provide a range of distributions from 25-70 according to individual requirements.

All products are sold on the understanding that the user is solely responsible for determining their suitability for the intended use. All information given and recommendations made herein are based upon our research and are believed to be accurate, but no guarantee, either expressed or implied, is made with respect thereto or with respect to the infringement of any patent. NEITHER MINERALS TECHNOLOGIES NOR ANY OF ITS AFFILIATES MAKES NO WARRANTY OF MERCHANTABILITY OR SUITABILITY FOR ANY PARTICULAR PURPOSE IN CONNECTION WITH ANY SALE OF THE PRODUCTS DESCRIBED HEREIN. Inconsistent terms and conditions contained in the buyer's purchase order shall not be binding on MINERALS TECHNOLOGIES unless reflected in writing signed by MINERALS TECHNOLOGIES' representative. The information contained herein is not to be copied or otherwise used in any publication in whole or in part, without written permission from MINERALS TECHNOLOGIES.