

# MARBLEWHITE® (Lucerne Valley, CA)

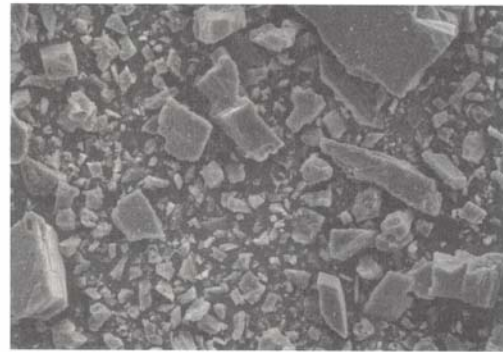
## ground calcium carbonate

MARBLEWHITE® limestone products are high purity calcium carbonates characterized by high brightness and controlled particle size. MARBLEWHITE® limestone products are used in a variety of applications such as paints, polymers, caulks and putties, joint compound, rubber and building products.

Consistent MARBLEWHITE® limestone quality is assured by manufacturing process control, from mining of the calcite ore to final packaging. All MARBLEWHITE® limestone products are manufactured from a high quality deposit of calcium carbonate located in Lucerne Valley, CA. Chemical and mineralogical compositions are the same for all Lucerne Valley MARBLEWHITE® limestone products.

### Typical Properties

	MW325	MW350	MW200	MW195	MW125
Median Particle Size (Sedigraph 5100, microns)	13.0	15.0	17.0	20.0	26.0
Dry Brightness (Hunter Y, Rd value)	92	92	92	91	90
Bulk Density (pounds/ft <sup>3</sup> )	45.6	50.10	51.0	53	57.2
(grams/cc)	0.73	0.80	0.82	0.85	0.92
Tap Density (pounds/ft <sup>3</sup> )	97.5	102.3	109.5	110	111.4
(grams/cc)	1.56	1.64	1.75	1.75	1.75
Oil Absorption (grams/100 grams)	12	12	11	----	----
Specific Gravity	2.7	2.7	2.7	2.7	2.7



### Chemical Composition (typical)

Calcium Carbonate	CaCO <sub>3</sub>	98.0%
Magnesium Carbonate	MgCO <sub>3</sub>	1.2%
Iron as	Fe <sub>2</sub> O <sub>3</sub>	<0.1%
Moisture (% weight loss @ 110° C)	H <sub>2</sub> O	0.2%

### Particle Size (Mesh Retention)

	MW325	MW350	MW200	MW195	MW125
325 Mesh Retention	1%	5%	11%	19%	----
100 Mesh Retention	----	----	----	----	3%

All products are sold on the understanding that the user is solely responsible for determining their suitability for the intended use. All information given and recommendations made herein are based upon our research and are believed to be accurate, but no guarantee, either expressed or implied, is made with respect thereto or with respect to the infringement of any patent. SMI MAKES NO WARRANTY OF MERCHANTABILITY OR SUITABILITY FOR ANY PARTICULAR PURPOSE IN CONNECTION WITH ANY SALE OF THE PRODUCTS DESCRIBED HEREIN. Inconsistent terms and conditions contained in Buyer's purchase order shall not be binding on SMI/BMI unless reflected in writing signed by SMI/BMI's representative. The information contained herein is not to be copied or otherwise used in any publication in whole or in part, without written permission from Specialty Minerals Inc./Barretts Minerals Inc.

### Sales Offices

Bethlehem, PA • 1-610-997-8394  
Lucerne Valley, CA • 800-255-5832  
www.mineralstech.com

MARBLEWHITE® is a registered trademark of Minerals Technologies Inc. or its subsidiaries.  
©Specialty Minerals Inc. 7/2008