

## QUICKLIME-CHEMICAL GRADE (Adams, MA)

### High calcium granular industrial quicklime

High Calcium Granular Industrial Quicklime is manufactured by Specialty Minerals from a deposit or high quality calcium carbonate at our facility in Adams, MA. This material is produced in a fluo-solid type kiln which yields a granular quicklime of high reactivity that is dust free and free-flowing.

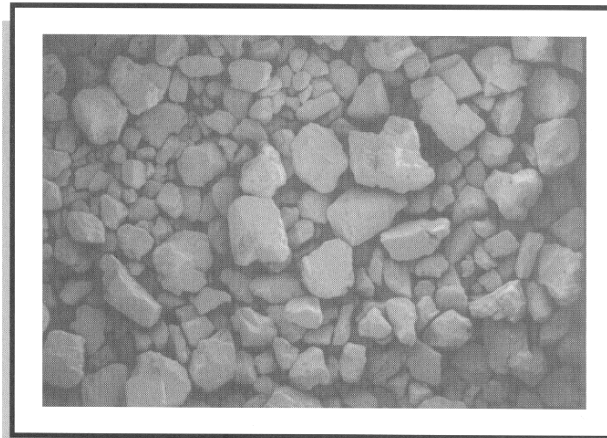
Chemical Grade Quicklime is used in many industrial applications. It can be easily slaked with water to produce calcium hydroxide in the form of a milk-of-lime slurry. Industrial applications include: acid neutralization, causticizing, calcium hypochlorite bleaching, calcium silicate manufacture as well as flue gas desulfurization, waste and sewage treatment and water purification.

#### Typical Properties

Sieve Size (retained on 10 mesh)	Trace
(retained on 100 mesh)	98%
Bulk Density (pounds/ft <sup>3</sup> )	70
(grams/cc)	1.12
Available Lime Index (ASTM C25)	95%
Water Reactivity (ASTM C110)	34°C
(30 second temp rise)	

#### Chemical Composition (typical)

Total Calcium Oxide	CaO	96%
Magnesium Carbonate	MgO	0.8%
Iron as	Fe <sub>2</sub> O <sub>3</sub>	0.10%
Loss On Ignition	L.O.I.	0.10%



CAUTION: Quicklime is a strongly alkaline material. Contact with skin and eyes will cause irritation and possible corrosion damage. Inhalation of dust may cause coughing, sneezing, and inflammation of the respiratory passages.

All products are sold on the understanding that the user is solely responsible for determining their suitability for the intended use. All information given and recommendations made herein are based upon our research and are believed to be accurate, but no guarantee, either expressed or implied, is made with respect thereto or with respect to the infringement of any patent. SMI MAKES NO WARRANTY OF MERCHANTABILITY OR SUITABILITY FOR ANY PARTICULAR PURPOSE IN CONNECTION WITH ANY SALE OF THE PRODUCTS DESCRIBED HEREIN. Inconsistent terms and conditions contained in Buyer's purchase order shall not be binding on SMI/BMI unless reflected in writing signed by SMI/BMI's representative. This information is not to be copied, used in evidence, released for publication or public distribution without written permission from Specialty Minerals Inc./Barretts Minerals Inc.

#### Sales Offices

Bethlehem, PA • 1-610-997-8394  
Adams, MA • 800-225-1156  
www.mineralstech.com

Quicklime-Chemical Grade  
©Specialty Minerals Inc. 2/2009