

# MARBLEWHITE<sup>®</sup> (ADAMS, MA)

## ground limestone

Specialty Minerals MARBLEWHITE<sup>®</sup> limestone products are high purity calcium carbonates which are characterized by good brightness and controlled particle size. MARBLEWHITE<sup>®</sup> calcium carbonates are used in a variety of applications such as paints, polymers, caulks and putties, rubber and other related building products.

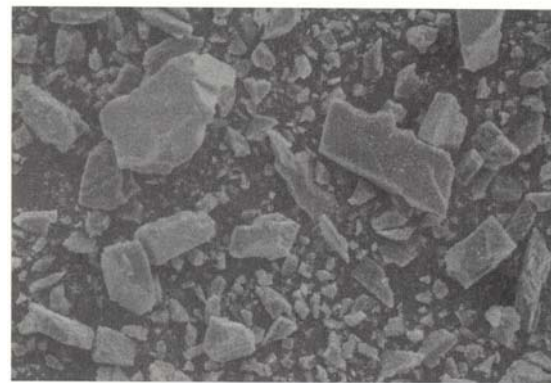
All MARBLEWHITE<sup>®</sup> products are manufactured from a high quality deposit of natural calcite located in Adams, MA. Chemical and mineralogical composition are the same for all MARBLEWHITE<sup>®</sup> products.

### TYPICAL PROPERTIES

	MW325	MW300	W200
Dry Brightness (Hunter Y, Rd Value)	90	90	90
Bulk Density (pounds/ft <sup>3</sup> )	45	48	50
(grams/cc)	0.72	0.77	0.8
Final Tap Density (pounds/ft <sup>3</sup> )	80	87	90
(grams/cc)	1.28	1.39	1.44
Oil Absorption (grams/100 grams of oil)	15	13	12

### CHEMICAL COMPOSITION (typical)

Calcium Carbonate	CaCO <sub>3</sub>	96%
Magnesium Carbonate	MgCO	1%
Iron as	Fe <sub>2</sub> O <sub>3</sub>	<0.1%
Moisture (% weight loss @ 110° C)	H <sub>2</sub> O	<0.1%



### Particle Size (Mesh Retention)

	MW 325	MW300	MW200
325 Mesh Retention	0.6%	10%	14%
200 Mesh Retention	nil	1.0%	1.5%

All products are sold on the understanding that the user is solely responsible for determining their suitability for the intended use. All information given and recommendations made herein are based upon our research and are believed to be accurate, but no guarantee, either expressed or implied, is made with respect thereto or with respect to the infringement of any patent. SMI MAKES NO WARRANTY OF MERCHANTABILITY OR SUITABILITY FOR ANY PARTICULAR PURPOSE IN CONNECTION WITH ANY SALE OF THE PRODUCTS DESCRIBED HEREIN. Inconsistent terms and conditions contained in Buyer's purchase order shall not be binding on SMI/BMI unless reflected in writing signed by SMI/BMI's representative. The information contained herein is not to be copied or otherwise, any publication in whole or in part without written permission from Specialty Minerals Inc./Barretts Minerals Inc.

#### Sales Offices

Bethlehem, PA • 800-801-1031  
 Adams, MA (800) 225-1156  
 www.mineralstech.com

MARBLEWHITE<sup>®</sup> is a registered trademark of  
 Minerals Technologies Inc. or its subsidiaries  
 ©Specialty Minerals Inc. 2007

