

# PERFORMANCE MINERALS FOR PAPER

## ALBACAR® PO SLURRY

### precipitated calcium carbonate (pcc)

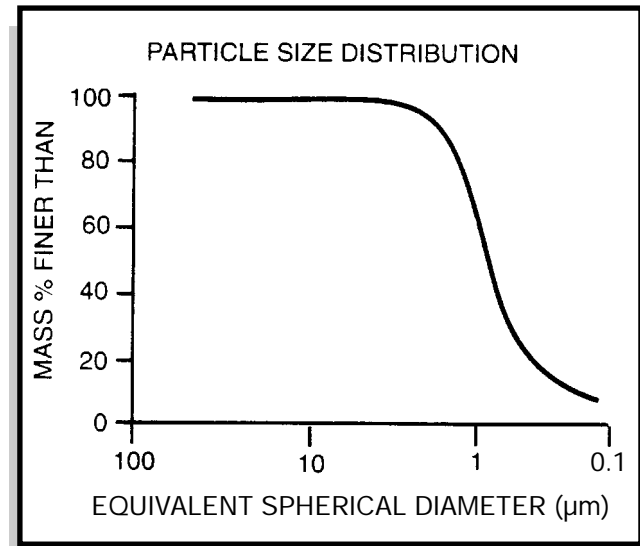
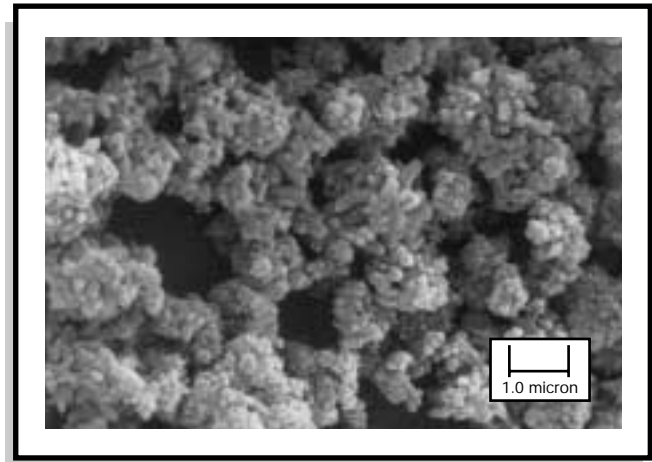
ALBACAR® PO scalenohedral precipitated calcium carbonate is recommended for use in paper filling applications where closing the sheet structure (ie. porosity) is required. ALBACAR® PO pcc's particle morphology and average particle size distribution are uniquely controlled during synthesis to provide an economical source of porosity control, opacity and brightness.

#### Typical Properties

Particle Shape .....	Rosette
Median Particle Size, $\mu\text{m}$ .....	0.9
(Sedigraph 5100)	
+ 325 Mesh Residue, % .....	<0.01
(Dispersed wet sieve)	
Dry Brightness (Hunter Y, Rd value) .....	97
Einlehner Abrasion, mg .....	3
(Model AT-1000 at 174,000 rev., brass wire)	
Surface Area meters <sup>2</sup> /gram .....	21

#### Chemical Composition (typical)

Calcium Carbonate	CaCO <sub>3</sub>	97%
Magnesium Carbonate	MgCO <sub>3</sub>	2%
Iron as	Fe <sub>2</sub> O <sub>3</sub>	<0.1%



All products are sold on the understanding that the user is solely responsible for determining their suitability for the intended use. All information given and recommendations made herein are based upon our research and are believed to be accurate, but no guarantee, either expressed or implied, is made with respect thereto or with respect to the infringement of any patent. SMI MAKES NO WARRANTY OF MERCHANTABILITY OR SUITABILITY FOR ANY PARTICULAR PURPOSE IN CONNECTION WITH ANY SALE OF THE PRODUCTS DESCRIBED HEREIN. Inconsistent terms and conditions contained in Buyer's purchase order shall not be binding on SMI/BMI unless reflected in writing signed by SMI/BMI's representative. This information is not to be copied, used in evidence, released for publication or public distribution without written permission from Specialty Minerals Inc./Barretts Minerals Inc.