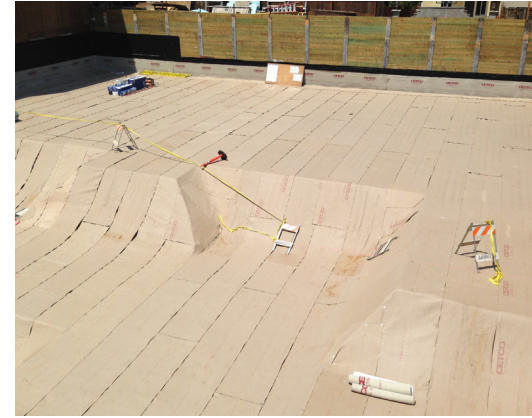
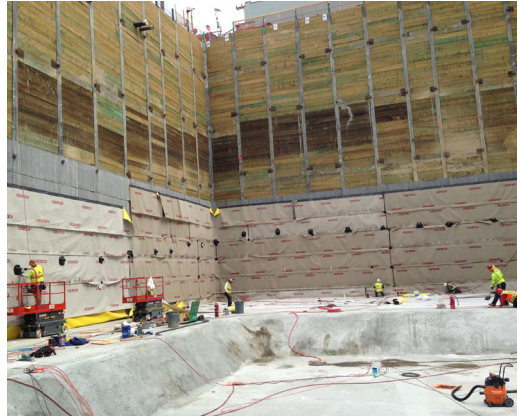
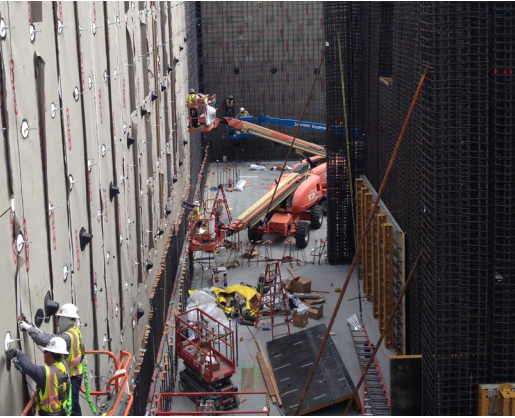


Challenging conditions call for the confidence of COREFLEX® waterproofing membrane

340 Fremont is a premier high rise building in the Rincon Hill district of San Francisco, CA. The building is 40 stories high with three below-ground parking levels.



PROJECT

340 Fremont

Project Owner:
Equity Investments

Design Engineer:
Handel Architects & Simpson
Gumpertz & Heger

General Contractor:
Suffolk Construction

LOCATION

San Francisco, CA, USA

PRODUCTS

COREFLEX®

HydroShield™

CHALLENGE:

This 18 metre deep property line application created a number of challenges for the construction team. CETCO's Field Services and Technical Sales Manager provided the necessary coordination for the site specific detailing and installation feedback via the Certified Inspection firm for the owner and construction team.

SOLUTION:

CETCO's COREFLEX® was specified for the project due to performance and reliability in challenging conditions. With COREFLEX's launch in 2007, CETCO further established the reputation for quality through performance and surety throughout North America and the world. On 340 Fremont, the Technical Sales Manager worked closely with both Handel Architects and the waterproofing consultant (Simpson Gumpertz & Heger) to ensure COREFLEX® was specified and detailed appropriately. From site support and technical excellence, the peace of mind gained through adherence to the HydroShield™ Quality Assurance Program provides Equity Investments the long term performance and surety needed for their building.

Challenging conditions call for the confidence of COREFLEX® waterproofing membrane

EXECUTION:

A challenging, fast paced, construction schedule as well as site dewatering issues required superior performance from CETCO. Due to the commitment from the CETCO team and performance of COREFLEX®, the project remained on track through these challenges. CETCO's standards and passion for quality creates confidence with customers while differentiating CETCO from other waterproofing suppliers.

RESULT:

After a completed and watertight installation, Equity Investments and the design team were pleased with their selection of CETCO to address this project. This project success and continued support from CETCO will make CETCO products the basis of design on future projects where high performance waterproofing is required.