



# VINTEGRA<sup>®</sup>

## WATERPROOFING & GAS VAPOR PROTECTION MEMBRANES

20  
23

[WWW.CETCO.COM](http://WWW.CETCO.COM)



**CETCO<sup>®</sup>**




# PROTECTING YOUR BUILDING

## *The Importance of Below-Grade Waterproofing.*

Proper waterproofing is a must for successful building protection, with hydrostatic and non-hydrostatic solutions available to avoid water ingress defects. These measures ensure both structural integrity and interior environment health of your cast-in-place concrete construction - essential steps in the preservation of quality structures.

## *What is a Vapor Intrusion?*

Contaminants in the soil and groundwater can cause noxious vapors to enter any structures above them, significantly diminishing indoor air quality. To protect occupants from harm, a vapor intrusion mitigation system is essential – blocking out these dangerous vapors and restoring clean air conditions inside buildings.



**Ensure better  
safety for both your  
guests and personal  
investments with a  
building structure that  
features improved air  
quality and increased  
waterproofing.**

# VINTEGRA® WATERPROOFING & GAS VAPOR MEMBRANE

VINTEGRA® waterproofing and gas vapor membranes offer superior protection from water and gas vapors. Featuring a 7-layer engineered polymeric film consisting of polyethylene (PE) and EVOH barrier layers. The EVOH barrier layer integrated into the membrane - ensures excellent performance against methane and other vapors entering through concrete foundations. Lab studies have proven this to be true – compared to HDPE membranes of similar thicknesses; multi-layer EVOH barriers provide maximum assurance!

## **SUPERIOR PROTECTION**

VINTEGRA® waterproofing and gas vapor membranes are suitable for both pre-applied and post-applied applications and are specially engineered to form an integral seal on a building's foundation. When utilized with the GEOVENT™ ventilation system, the system provides superior protection against water, gas ingress as well as vapor mitigation for below grade structures when properly installed. VINTEGRA® membranes can be used on sites with elevated contaminants of concern, including, but not limited to:

- » **METHANE**
- » **RADON**
- » **PERCHLOROETHYLENE (PCE)**
- » **TRICHLOROETHYLENE (TCE)**
- » **BENZENE**

## PRODUCT RANGE

### VINTEGRA® P20 PRE-APPLIED MEMBRANE

VINTEGRA® P20 membrane is an advanced waterproofing and gas resistant membrane that provides unparalleled protection against the ingress of water, water vapor, methane, and other harmful gas vapors into buildings. Our green PE/EVOH membrane is integrated with an adhesive coating that bonds to poured or placed concrete in various applications.

For use in both Hydrostatic and Non-Hydrostatic applications on:

- Foundation Slabs
- Property Line Walls
- Shotcrete Foundation Walls

### PRODUCT BENEFITS

- » **TWO PRE-APPLIED ADHESIVE EDGES FOR POSITIVE LAP SEAL**
- » **VERY LOW WATER VAPOR BARRIER**
- » **FLEXIBLE FOR EASE OF INSTALLATION**
- » **CHEMICALLY RESISTANT**
- » **HIGH PUNCTURE RESISTANCE**
- » **HIGH TENSILE STRENGTH**
- » **RESISTS LATERAL WATER MIGRATION**
- » **AGGRESSIVE ADHESIVE COATING THAT FULLY BONDS TO CONCRETE**



# VINTEGRA®

## PRODUCT RANGE

### VINTEGRA® GB20 PRE-APPLIED MEMBRANE

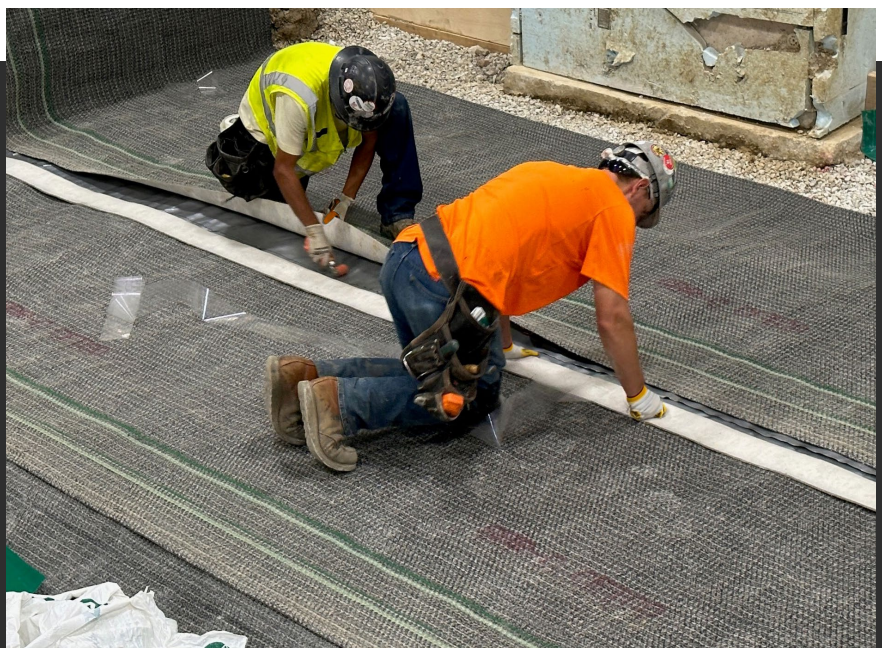
VINTEGRA® GB20 membrane is an advanced waterproofing and gas resistant membrane that provides unparalleled protection against the ingress of water, water vapor, methane, and other harmful gas vapors into buildings. The membrane incorporates a unique bentonite geotextile waterproofing component that provides additional protection during and following installation and mechanically bonds to poured or placed concrete.

For use in both Hydrostatic and Non-Hydrostatic applications on:

- Foundation Slabs

#### PRODUCT BENEFITS

- » **VERY LOW WATER VAPOR BARRIER**
- » **ACTIVE MEMBRANE**
- » **BENTONITE GEOTEXTILE COMPONENT**
- » **CHEMICALLY RESISTANT**
- » **HIGH PUNCTURE RESISTANCE**
- » **HIGH TENSILE STRENGTH**
- » **FULLY BONDED TO CONCRETE**
- » **DOUBLE TAPED ADHERED LAP SEAMS**
- » **TESTED TO 231 FEET (100PSI) OF HYDROSTATIC PRESSURE**





# VINTEGRA®

## PRODUCT RANGE

### VINTEGRA® SA20 POST-APPLIED MEMBRANE

VINTEGRA® SA20 membrane is an advanced waterproofing and gas resistant membrane that provides unparalleled protection against the ingress of water, water vapor, methane, and other harmful gas vapors into buildings. With the addition of an aggressive pressure-sensitive butyl adhesive, the membrane forms a bond to in-place concrete, preventing lateral water migration.

For use in both Hydrostatic and Non-Hydrostatic applications on:  
- Backfilled Foundation Walls

#### PRODUCT BENEFITS

- » **SELF-ADHERING MEMBRANE**
- » **VERY LOW WATER VAPOR BARRIER**
- » **FLEXIBLE FOR EASE OF INSTALLATION**
- » **NO PRIMER REQUIRED**
- » **CHEMICALLY RESISTANT**
- » **HIGH PUNCTURE RESISTANCE**
- » **HIGH TENSILE STRENGTH**



# ABOUT US

## OUR COMPANY

### WHO IS CETCO?

Minerals Technologies Inc. (MTI) is a global leader in the development and production of a diverse range of mineral-based products. CETCO is the construction and environmental technologies business unit of MTI and a leader in transforming clay minerals into sophisticated products for remediation/waste treatment, lining systems, waterproofing, and subsurface drilling.

CETCO offers solutions for commercial, industrial, and infrastructure construction challenges worldwide. We provide expertise

in transforming minerals and polymers into technologies that improve productivity and performance. From technical problem-solving to third party inspection services, CETCO consults with customers to develop long-term solutions.

Our international team of scientists and engineers provide products and services that exceed industry standards, benefit customers worldwide, and offer innovative alternatives to traditional options.







**CETCO®**

**2870 Forbs Avenue  
Hoffman Estates, IL 60192  
cetco@mineralstech.com  
P: 800.527.9948**

VINTEGRA\_BROCHURE\_NA\_EN\_20231002\_V2  
MINERALS TECHNOLOGIES®, the MTI Logo®, GEOVENT™  
and VINTEGRA® are registered trademarks of Minerals  
Technologies Inc. or its subsidiaries.

©2023 CETCO. IMPORTANT: The information contained herein  
supersedes all previous printed versions, and is believed to  
be accurate and reliable. For the most up-to-date information,  
please visit cetco.com. CETCO accepts no responsibility for the  
results obtained through application of this product. CETCO  
reserves the right to update information without notice.

**WWW.CETCO.COM**