



*State of the Art Application Solutions*



*Proven Shotcrete Linings for Nose Ring Applications*

## *'Providing a New Perspective on Performance'*

MINERALS  
TECHNOLOGIES



*State of the Art Shotcrete Technology*

- ✓ Reduce Downtime
- ✓ Superior Physical Properties
- ✓ Rapid Installation Rates
- ✓ Increase Capacity Utilization
- ✓ Increase Lining Durability
- ✓ Improve Operating Profit



*Advanced Shotcrete Systems*

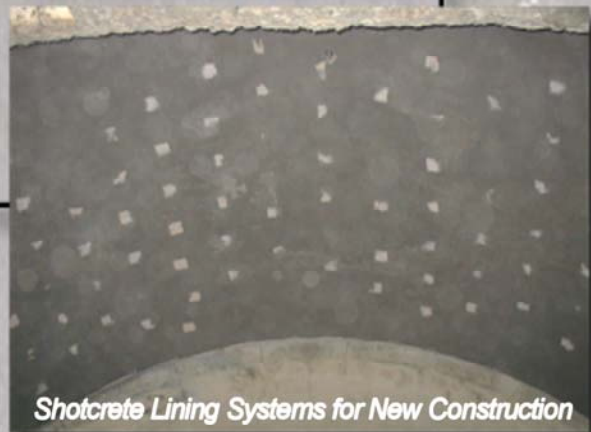


**MiNTEQ**

MiNTEQ International Inc.  
 640 North 13th Street  
 Easton, PA 18042  
 Phone: (610) 250 - 3036  
 E-mail: [minteq.productinfo@minteq.com](mailto:minteq.productinfo@minteq.com)



*Shotcrete Linings for Kiln Rebuilds*



*Shotcrete Lining Systems for New Construction*