

VICAL[®] 1800 (Lucerne Valley, CA)

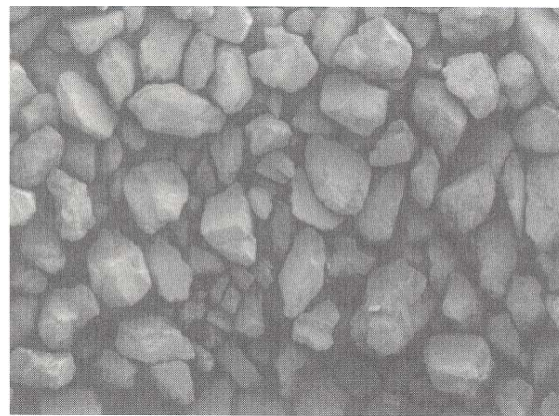
screened limestone

Specialty Minerals VICAL[®] 1800 product grade limestone are of high purity, screened limestone product with a granular appearance and top size of 16 mesh.

Consistent quality of VICAL[®] 1800 screened limestone is assured by process control in all aspects of manufacture, from mining of calcite ore to milling and final packaging. VICAL[®] 1800 is manufactured from a high quality deposit of natural calcite located in Lucerne Valley, CA.

Chemical Composition (typical)

Calcium Carbonate	CaCO ₃	97%
Magnesium Carbonate	MgCO ₃	1.4%
Iron as	Fe ₂ O ₃	<0.1%
Moisture (% weight loss @110°C)	H ₂ O	0.2%



Sieve Analysis (typical)

Cumulative Weight % Retained

16 Mesh	0
20 Mesh	8
30 Mesh	24
40 Mesh	54
50 Mesh	69
70 Mesh	71
200 Mesh	75

All products are sold on the understanding that the user is solely responsible for determining their suitability for the intended use. All information given and recommendations made herein are based upon our research and are believed to be accurate, but no guarantee, either expressed or implied, is made with respect thereto or with respect to the infringement of any patent. SMI MAKES NO WARRANTY OF MERCHANTABILITY OR SUITABILITY FOR ANY PARTICULAR PURPOSE IN CONNECTION WITH ANY SALE OF THE PRODUCTS DESCRIBED HEREIN. Inconsistent terms and conditions contained in Buyer's purchase order shall not be binding on SMI/BMI unless reflected in writing signed by SMI/BMI's representative. The information contained herein is not to be copied or otherwise used in any publication in whole or in part, without written permission from Specialty Minerals Inc./Barretts Minerals Inc.

Sales Offices

Bethlehem, PA • 1-610-997-8394
 Lucerne Valley, CA • 800-255-5832
www.mineralstech.com

VICAL[®] is a registered trademark of
 Minerals Technologies Inc. or its subsidiaries.
 ©Specialty Minerals Inc. 6/2007