



# MARBLE-PFILL® Natural & Ultra (Lucerne Valley, CA) ground limestone

Marble-Pfill® Natural and Ultra ground limestone is characterized by excellent color with a controlled particle size and particle packing density. Marble-Pfill® ground limestone is manufactured at our Lucerne Valley, CA facility where uniformity is ensured by careful process control of all processing parameters. The primary application for the product is cultured marble.

Marble-Pfill® ground limestone offers the following advantages to the user:

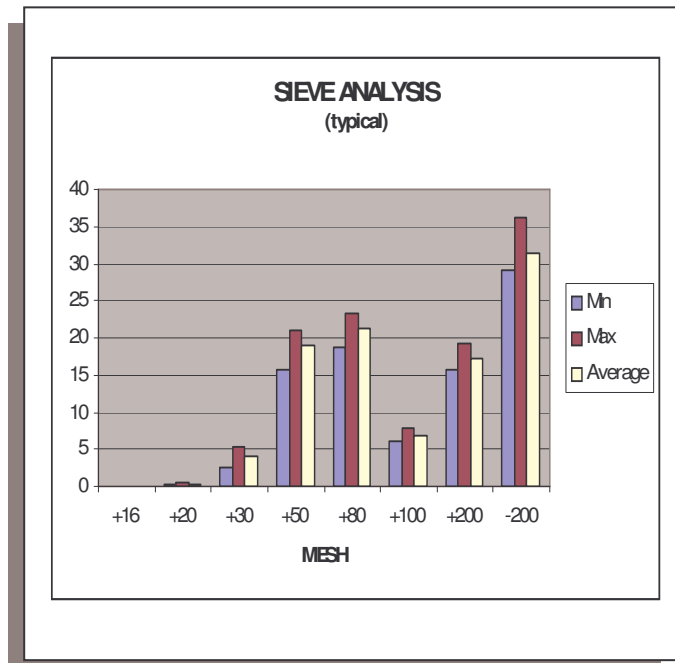
- Low Cost
- Tight Particle Size Control
- High Loading Levels

### Typical Properties

	Natural	Ultra
Dry Brightness (Hunter Y, Rd value)	82	87
Bulk Density (pounds/ft <sup>3</sup> )	74.5	
(grams/cc)	1.19	
Tap Density (pounds/ft <sup>3</sup> )	112.6	
(grams/cc)	1.80	
Specific Gravity	2.7	

### Chemical Composition (typical)

Calcium Carbonate	CaCO <sub>3</sub>	98.0%
Magnesium Carbonate	MgCO <sub>3</sub>	1.2%
Iron as	Fe <sub>2</sub> O <sub>3</sub>	<0.1%
Moisture (% weight loss @ 110° C)	H <sub>2</sub> O	0.2%



All products are sold on the understanding that the user is solely responsible for determining their suitability for the intended use. All information given and recommendations made herein are based upon our research and are believed to be accurate, but no guarantee, either expressed or implied, is made with respect thereto or with respect to the infringement of any patent. SMI MAKES NO WARRANTY OF MERCHANTABILITY OR SUITABILITY FOR ANY PARTICULAR PURPOSE IN CONNECTION WITH ANY SALE OF THE PRODUCTS DESCRIBED HEREIN. Inconsistent terms and conditions contained in Buyer's purchase order shall not be binding on SMI/BMI unless reflected in writing signed by SMI/BMI's representative. The information contained herein is not to be copied or otherwise used in any publication in whole or in part, without written permission from Specialty Minerals Inc./Barretts Minerals Inc.