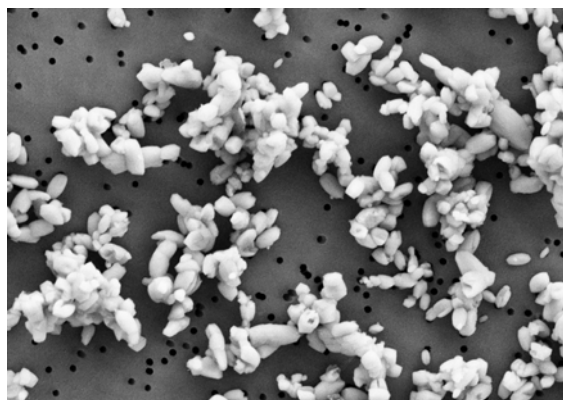


PERFORMANCE MINERALS
ALBAFIL[®] S10 (Adams. MA)
Precipitated Calcium Carbonate (PCC)

ALBAFIL[®] S10 PCC is a very fine, pure precipitated calcium carbonate slurry with an average particle size of 0.7 microns and excellent brightness. Its precisely controlled particle size, narrow distribution and symmetrical particle shape make it especially useful in extending titanium dioxide in architectural paint formulations. A recommended starting point is 10% replacement of equal volume. ALBAFIL[®] S10 PCC maintains opacity, gloss and brightness while allowing producers to lower overall formulation costs.

Typical Properties

Particle Shape	Symmetrical (Prismatic)
Solids (%)	70
Median Particle Size (µm) (Sedigraph 5100)	0.7
Specific Gravity	2.7
Dry Brightness (Hunter Y, Rd value)	98
Bulk Density (pounds/ft ³)	17
(grams/cc)	0.27
Tap Density (pounds/ft ³)	33
(grams/cc)	0.53
Oil Absorption (grams/100 grams pigment)	30
Calcium Carbonate (CaCO ₃)	97%



All products are sold on the understanding that the user is solely responsible for determining their suitability for the intended use. All information given and recommendations made herein are based upon our research and are believed to be accurate, but no guarantee, either expressed or implied, is made with respect thereto or with respect to the infringement of any patent. SMI MAKES NO WARRANTY OF MERCHANTABILITY OR SUITABILITY FOR ANY PARTICULAR PURPOSE IN CONNECTION WITH ANY SALE OF THE PRODUCTS DESCRIBED HEREIN. Inconsistent terms and conditions contained in Buyer's purchase order shall not be binding on SMI/BMI unless reflected in writing signed by SMI/BMI's representative. This information is not to be copied, used in evidence, released for publication or public distribution without written permission from Specialty Minerals Inc./Barretts Minerals Inc.

Sales Offices

Bethlehem, PA 1-610-997-8394
 Adams, MA (800) 225-1156
 www.mineralstech.com

ALBAFIL[®] is a registered trademark of
 Minerals Technologies Inc. or its subsidiaries
 © Specialty Minerals Inc. 2012

