

## FEATURES

- ▶ Controlled particle morphology and size
- ▶ High Brightness

## BENEFITS

- ▶ Economical solution as a pigment, filler, reinforcement, or bodying agent
- ▶ Tailored for desired oil absorption and viscosity
- ▶ Controlled light scattering, opacity, rheology, and reinforcement
- ▶ Exceptional finished color in Polymer Systems

# Precipitated Calcium Carbonate

ALBAFIL<sup>®</sup>, ALBAGLOS<sup>®</sup>, & ALBACAR<sup>®</sup> Uncoated Technical Grades

## Product Description

Specialty Minerals Precipitated Calcium Carbonate (PCC) in the Albafil,<sup>®</sup> Albaglos,<sup>®</sup> and Albacar<sup>®</sup> product families are suited for paint & coating, plastic, rubber, paper, ink, sealants, and agriculture. These products are high purity, have excellent brightness and precisely controlled particle size distributions.

A wide range of available properties are offered for optimizing performance based on application and end use. This family of products provides excellent light scattering, opacity, rheology control and reinforcement improvements.

These engineered products are produced in Adams, Massachusetts.

## Typical Physical Properties

	ALBAFIL <sup>®</sup>	ALBAGLOS <sup>®</sup>	ALBACAR <sup>®</sup> HO	ALBACAR 8101	ALBACAR 5970
Particle Shape	PRISMATIC	PRISMATIC	SCALENOHEDRAL	SCALENOHEDRAL	SCALENOHEDRAL
Dry Brightness (Hunter Y, Rd Value)	97	97	96	96	96
Particle Size, d50 (microns)					
By Sedigraph	0.8	1.4	1.2	1.3	1.9
By Laser Light Scattering	0.7	1.0	2.1	2.5	3.5
Particle Size, d90 (microns)					
By Sedigraph	1.5	6.0	2.0	3.9	3.3
By Laser Light Scattering	1.2	3.6	4.2	4.5	5.7
Surface Area (m <sup>2</sup> /gr)	8	7	12	7	7
Oil Absorption (ASTM D281)	32	29	70	36	50
Bulk Density (lbs/ft <sup>3</sup> )	17	16	15	19	21
Tap Density (lbs/ft <sup>3</sup> )	30	30	28	39	42

\*\*Values listed are typical, not to be considered as specifications of the product

## Chemical Properties

Calcium Carbonate	≥ 98%
Moisture	<0.5%
Specific Gravity	2.7
pH	8.5-9.5

▶ GCC

▶ Talc

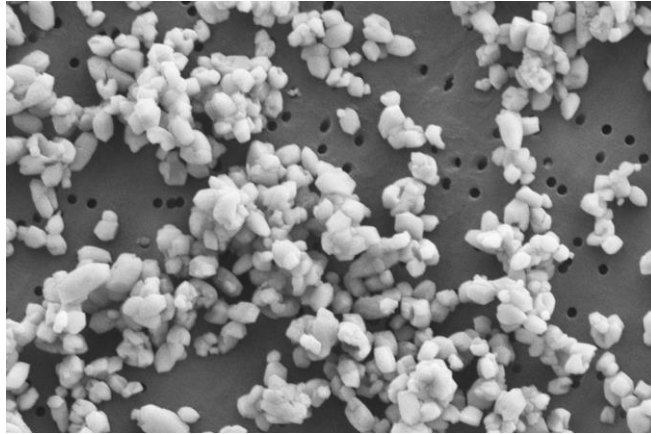
▶ Specialty PCC



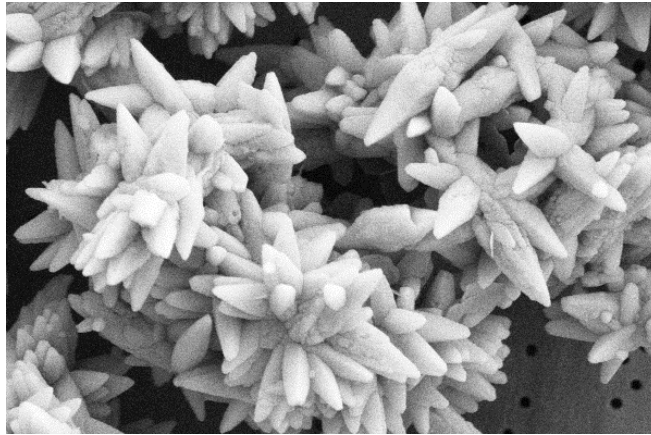
**Specialty**  
MINERALS

# Precipitated Calcium Carbonate

## Uncoated Technical Grades



Prismatic Crystal Structure



Scalenohedral Crystal Structure

### SHIPPING INFORMATION

PCC products ship from Adams, MA

Product is available in 50 lb. bags and supersacks.

For availability and minimum order quantity, contact customer service.

### SALES OFFICES

Adams, MA  
877-684-7627

Bethlehem, PA  
800-801-1031

[www.mineralstech.com](http://www.mineralstech.com)

All products are sold on the understanding that the user is solely responsible for determining their suitability for the intended use. All information given and recommendations made herein are based upon our research and are believed to be accurate, but no guarantee, either expressed or implied, is made with respect thereto or with respect to the infringement of any patent. SMI MAKES NO WARRANTY OF MERCHANTABILITY OR SUITABILITY FOR ANY PARTICULAR PURPOSE IN CONNECTION WITH ANY SALE OF THE PRODUCTS DESCRIBED HEREIN. Inconsistent terms and conditions contained in Buyer's purchase order shall not be binding on SMI/BMI unless reflected in writing signed by SMI/BMI's representative. This information is not to be copied, used in evidence, released for publication or public distribution without written permission from Specialty Minerals Inc./Barretts Minerals Inc.

The MTI Logo®, Specialty Minerals Logo®, ALBAFIL®, ALBAGLOS®, and ALBACAR® are registered trademarks of Minerals Technologies Inc. or its subsidiaries.



**Specialty**  
MINERALS