

## CALOPAKE® F

### precipitated calcium carbonate (pcc)

The CALOPAKE® F precipitated calcium carbonate (pcc) grade, manufactured at Specialty Minerals, Lifford, is a micro-crystalline white powder characterised by its high chemical purity, controlled particle shape and particle size distribution.

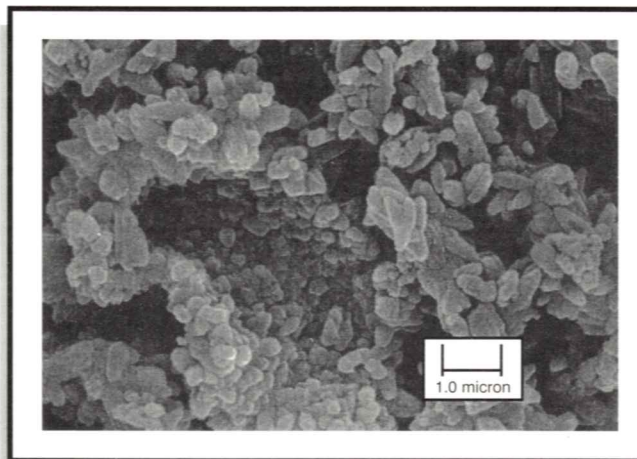
CALOPAKE® F pcc consists of agglomerated scalenohedral calcitic crystals that are characterised by their high opacifying power and brightness.

#### APPLICATIONS:

The CALOPAKE® F pcc grade is manufactured primarily for use in the paper industry. A variety of other applications include use in paints, inks, and plastics. CALOPAKE® F pcc is used in paper filling where it offers significant advantages over other fillers. These are particularly important in the printing and writing sector where it provides:

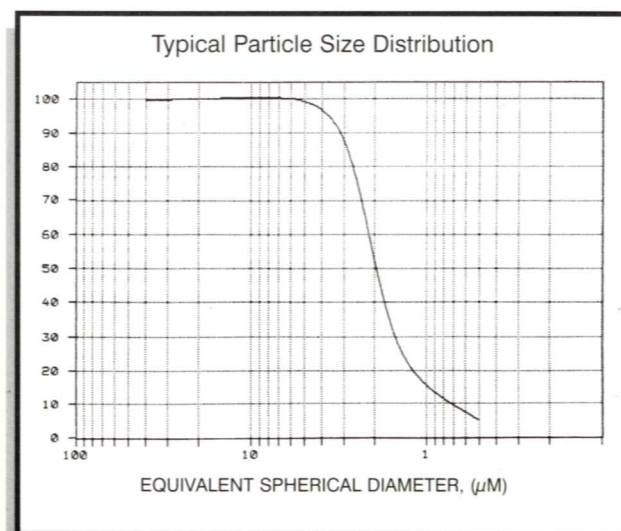
- Higher sheet opacity
- Increased bulk
- Lower abrasivity
- Potential for replacement of expensive additives
- Higher sheet brightness
- Increased smoothness
- No reduction in first pass retention

CALOPAKE® F pcc is also used in paper coating and offers benefits in terms of brightness, opacity, ink absorption and smoothness. CALOPAKE® F pcc is also used in water based paint where it offers the benefits of extending the main pigment and gives high brightness compared to other fillers.



Test	Units	CALOPAKE® F pcc
Appearance		White powder
Apparent Density	g/ml	0.43 to 0.53
Aragonite Content	%	50 max.
Extinction coefficient (opacity)	.....	2.9 min.
+75 µm (British standard) sieve residue	%	0.3 max.
Residual (Sturge) alkalinity	ml of 1M HC1	1.0 max.
Loss on drying (at time of testing) @ 105° for 2 hrs.	%	1.0 max.

CALOPAKE® F pcc is supplied to the above specification unless otherwise formally agreed.



All products are sold on the understanding that the user is solely responsible for determining their suitability for the intended use. All information given and recommendations made herein are based upon our research and are believed to be accurate, but no guarantee, either expressed or implied, is made with respect thereto or with respect to the infringement of any patent. SMI MAKES NO WARRANTY OF MERCHANTABILITY OR SUITABILITY FOR ANY PARTICULAR PURPOSE IN CONNECTION WITH ANY SALE OF THE PRODUCTS DESCRIBED HEREIN. Inconsistent terms and conditions contained in Buyer's purchase order shall not be binding on SMI/BMI unless reflected in writing signed by SMI/BMI's representative. This information is not to be copied, used in evidence, released for publication or public distribution without written permission from Specialty Minerals Inc./Barretts Minerals Inc.

#### Sales Offices

Lifford, Great Britain • 0121-252-4513  
Bethlehem, PA • (800) 801-1031  
Adams, MA • (800) 225-1156  
www.mineralstech.com

CPF0010299  
Lifford Ref: LIT B040 Doc No 30 Rev 7.00  
CALOPAKE® is a registered trademark of Minerals Technologies Inc. or its subsidiaries.  
©Specialty Minerals Inc. 1998